



**EXPRESS
DELIVERY**

**FAST
RESPONSE**

**EXPERT
ADVICE**

PH 07 32094333

sales@electricalfactory.com.au

TABLE OF CONTENTS

Test Equipment	3
<i>Test Leads and Accessories</i>	33
<i>Multi function Testers</i>	43
<i>RCD Test Equipment</i>	44
<i>Insulation Resistance Testers</i>	45
<i>Digital Multimeters CAT IV</i>	49
<i>Digital Clamp Meters</i>	51
<i>EFO Proving units</i>	55
<i>Load Tester Units</i>	58
<i>Loop Impedance Testers</i>	59
<i>Phase Rotation Meters</i>	61
<i>Voltage Testers and Indicators</i>	63
<i>Network Testers</i>	68
<i>Calibration Instruments</i>	70
<i>Earth Resistance Testers</i>	72
<i>Miscellaneous Test Equipment</i>	73
Safety Products	75
<i>Insulated Gloves</i>	127
<i>Electrical Insulated Mats</i>	136
<i>Switchboard Rescue Kits</i>	139
<i>HaloSL Safety Hardhat Light</i>	143
<i>Arc Flash Face shields</i>	145
<i>Arc Flash Kits</i>	149
<i>Arc Flash Clothing</i>	151
<i>Lockout and Tag out</i>	159
<i>Respiratory Protective Equipment</i>	175
<i>Electrical Workers Fall Protection</i>	177
<i>LV Covers and Blankets</i>	181
<i>First Aid Equipment</i>	184
<i>Asbestos Safety for Minor works</i>	189
<i>Fibreglass Rescue Crooks</i>	192
Tools and Equipment	194
<i>1000V Insulated Tools</i>	218
<i>Professional Hand Tools</i>	230
<i>Overhead Line Products</i>	232
<i>Telescopic and Fixed Hot Sticks</i>	238
<i>Insulated Digging Tools</i>	245
<i>Plumbers temporary continuity bonds</i>	246

Level 2 ASP Equipment 247
EV Maintenance and Safety 276

TEST EQUIPMENT



KLEIN LOW-IMPEDANCE CLAMP METER

SKU: CL700

The Klein Low-Impedance Clamp meter is Drop Proof to 2M. It features a low impedance function to eliminate ghost voltages while importantly Providing a safety category rating of CAT IV 600V. It has all the Required functions required by Electrical Utility workers and General Electricians. Test leads measure the AC/DC voltage, resistance, continuity, frequency and capacitance and test the diodes. Thermocouple probe measures the temperature.

[Read More](#)





EFO CONTACTLESS VOLTAGE TESTER

SKU: VS50

The EFO contactless voltage tester has been designed to meet the high quality and specifications required by Australian utilities and service providers. The operating range is 50-1000V with a overvoltage safety category rating of CAT IV 1000V. Furthermore the EFO VS50 contactless voltage tester features a self test and is contained in a IP65 rugged waterproof housing.

[Read More](#)



EFO ANALOGUE INSULATION TESTER

SKU: IRA1000

The IRA1000 EFO Analogue Insulation Tester has always been a popular choice because of its price and simplicity for insulation testing. This insulation tester comes with the factory calibration certificate and test report.

[Read More](#)





M1120-V2-B BLUETOOTH NST NEUTRAL AND SUPPLY TESTER

SKU: M1120KIT-B

The Dewar M1120-V2 NST Neutral and Supply Tester was designed in conjunction with Power companies. To ensure the incoming Active and Neutral power connections to customer's premises are correctly identified and are safe to use before a power connection is made. EFO also supplies NST testing accessories and personal protective equipment. This is Bluetooth model for NSW and ACT only, as the maximum neutral to earth voltage is 10 volts. Click here for NST M1120-V2-B Neutral Supply Tester for QLD, SA and VIC.

[Read More](#)



M1121-V2-B BLUETOOTH NST NEUTRAL AND SUPPLY TESTER

SKU: M1121KIT-B

The Dewar M1121-V2 NST Neutral and Supply Tester was designed in conjunction with Power companies. To ensure the incoming Active and Neutral power connections to customer's premises are correctly identified and are safe to use before a power connection is made. EFO also supplies NST testing accessories and personal protective equipment. This is Bluetooth model for NSW and ACT only, as the maximum neutral to earth voltage is 10 volts. Click here for NST M1120-V2-B Neutral Supply Tester for QLD, SA and VIC.

[Read More](#)





THERMAL IMAGER FOR IOS DEVICES

SKU: TI222

The Klein Tools TI222 Thermal Imager for iOS Devices has 10,800 pixels delivering excellent resolution to troubleshoot hot and cold spots. This Thermal Imager is perfect for detecting hot spots in panels, on wiring, or on parts of equipment; helping find sources of energy loss within a home/building; helps detect moisture behind walls and flooring; clogs in pipes; and much more. Fits phone cases up to 1/16-Inch (1.5 mm). Phone cases thicker than 1/16-Inch (1.5 mm) may require removal of case for secure connection. Easily capture, store, and share thermal images and video through the Klein Tools Thermal Imager App, available for free in the App Store.

[Read More](#)



FLEXIBLE COIL CURRENT SENSOR 1000A

SKU: CA1000

The EFO [GBM1000](#) multimeter provides a designated AC Clamp function designed for use with the CA1000 displaying accurate current measurements directly in Amps.

[Read More](#)





INSULATED GLOVE INFLATOR TESTER

SKU: GLOVEIN

The EFO Insulated Glove Inflater Tester is a portable device that conducts a air test on Insulated gloves and assists users during visual inspection to search for any abrasion, cuts, tears or punctures. Our Glove inflator can be used anywhere and comes with a durable storage bag made out of canvas and a strap to hold the rubber insulating glove in place.

[Read More](#)



SANWA 1000A CLAMP METER CAT IV 600V

SKU: DCM301

The Sanwa 1000A Clamp Meter is designed for measurements of low-voltage circuits in the application range of 1000V CAT III and 600V CAT IV. It is suited to current and voltage measurement of power lines, electrical equipment, and electrical facilities less than 1000Vrms to ground.

[Read More](#)





NON-CONTACT PHASE ROTATION METER 2M LEADS

SKU: PR3NC-2M

Our Non-Contact Phase Rotation Meter with 2M leads has been designed to for utility customers with 2M leads and CAT IV 600V Safety rating. Our Phase Rotation Meters are designed for Use with Utility workers, ASP Service providers and also electrical contractors.

[Read More](#)



CONTACT HIGH VOLTAGE DETECTOR 11KV

SKU: 213HVD

This Contact High Voltage Detector has been designed to meet the latest IEC standards. The HVDs are used to determine whether a system is live or not so that it may be safely earthed/grounded. It is self starting and automatically activated when high voltage is applied to the contact electrode.

[Read More](#)





SANWA 2000A CLAMP METER

SKU: DCM2000DR

This instrument is an AC/DC clamp meter/digital multimeter of the RMS value response type, designed for measurements in the range specified by IEC61010-1 CAT.IV 1000V. It is suitable for current and voltage measurements of low-voltage circuitry, electric equipment and power supply facilities.

[Read More](#)



SANWA VOLTAGE DETECTOR SUPPORTER

SKU: KDP10



The Sanwa Voltage Detector Supporter is a device to prevent erroneous cutting of live wires due to misjudgement. Before cutting, you can see if the wiring is live. It is designed to be attached to electricians pliers. When the cable is live the product notifies you with a alarm and LED indication. The product is not to be used in place of a voltage detector or multimeter in testing for dead.

[Read More](#)





SEW DIGITAL MILLIOHM METER

SKU: 4137MO

The microprocessor controlled SEW Digital Milliohm Meter comes supplied from EFO with a set of high quality kelvin test leads to assist in making accurate measurements.

[Read More](#)



CONVENIENT EXTENSION TEST LEAD

SKU: TR25-G

The New TR25-G Convenient Extension Test Lead can be used as a trailing lead or in situations where longer test leads are required to connect to test instruments. They can also be connected together for a longer run. Supplied with 25m of flexible cable. The 130mm diameter compact design allows the TR25 Extension Test Lead to fit into tool bags or back packs. Test Cable is easily wound back onto the reel for fast retrieval. A selector switch enables the reel to run free, under tension or stop. This product is also available in CATIV600V Red and Black test lead configurations.

[Read More](#)





EXTENDED INDEPENDENT EARTH TRAILING LEAD

SKU: ETL20SS-L

The EFO ETL20SS-L Extended Independent Earth Trailing Lead sets a new standard of quality and safety. The 645mm Earth Stake was designed for customers with applications in [Loam](#) soil environments. The standard [ETL20SS](#) overall length is 400mm and is used for general applications. Combining several uniquely innovative functional features. Developed with leading utilities and equally supporting Australian manufacturing.

[Read More](#)



3 PIN TEST LEAD SET FOR GPOS

SKU: TL-PIN

The TL-PIN 3 Pin Test Lead Set has a Red, Black and Green banana plugs and can be connected to most [Test Equipment](#) with 4mm Sockets. This Lead Set is generally used for connection of RCD and Loop impedance testers to Australian and New Zealand socket outlets. This lead set can also be used as the replacement socket connection for the EFO [MFT4](#) Multifunction tester and the [Autotrip](#) RCD tester.

[Read More](#)



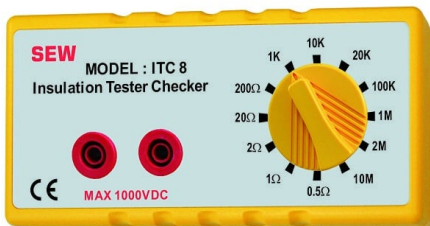


STRAIGHT TEST LEAD SET CAT IV 600V

SKU: TL-RGB

The TL-RGB Straight Test Lead Set has Red and Black and also Green Probes and Crocodile Clips. This set has straight connection plugs for where a right angle plug cannot fit due to obstructions on the test equipment case. Rated to safety standard Cat IV 600V 10A. Test leads for meters and testers are highly susceptible to poor contact and damage. Our patented screw end offsets the bending oppression, which makes it highly durable and long lasting. The TL-RGB fits most test equipment with 4mm Sockets and is the preferred replacement lead set for the EFO [MFT4](#) and [AUTOTRIP](#).

[Read More](#)



SEW ITC8 CHECK BOX

SKU: ITC8

The SEW ITC8 Check Box provides a quick check to ensure the instrument being used is reading accurately. This resistor block allows the user to regularly verify the measurements taken by their insulation tester or multi meter. The check box has 12 resistance settings ranging from 0.5 Ohms to 10MOhms to check against.

[Read More](#)





PROVING UNIT FOR HV NON-CONTACT DETECTORS

SKU: HVNCT300

This Proving Unit for HV Non-Contact Detectors is designed to be used in conjunction with High Voltage non-contact voltage detectors such as the [HP300](#). The Unit produces an EMF (Electro-magnetic field) which can be detected to prove the detector it is working correctly. They produce enough EMF to allow HV Non-Contact detectors to be tested at up to 500,000 volt at a distance of 50 mm.

[Read More](#)



LANTERN TEST LEAD SET CAT IV 600V

SKU: TL-L

This Lantern test lead Set has Red and Black Lantern Probes that fit into 4mm banana terminals. Rated to safety standard Cat IV 600V 10A. Test leads for meters and testers are highly susceptible to poor contact and damage. Our patented screw end offsets the bending oppression, which makes it highly durable and long lasting.

[Read More](#)





GPO TEST LEAD SET

SKU: TL-C

Sick of damaging or breaking your multimeter test probes. This GPO Test Lead Set is manufactured with flat chisel tips designed to easily fit into GPOs without damaging the socket outlet or the probes. This test lead set is rated at CATIV 600V with the caps on and CATII 1000V when removed.

[Read More](#)



POWER POINT TEST LEADS WITH CROC CLIPS

SKU: TL-CC

Sick of damaging or breaking your multimeter test probes. These Power Point Test Leads are manufactured with flat chisel tips designed to easily fit into GPOs without damaging the socket outlet or the probes. This test lead set is rated at CATIV 600V with the caps on and CATII 1000V when removed. This set also comes complete with Red/Black Crocodile clips for additional testing applications.

[Read More](#)





SANWA LEAKAGE CLAMP METER

SKU: DLC470

The Sanwa Leakage Clamp Meter is very useful for measuring earth leakage or load current on power circuits, RCDs and electrical equipment. This meter is extremely accurate and is must for any serious electrician conducting fault finding tasks.

[Read More](#)



KYORITSU ANALOGUE INSULATION TESTER

SKU: 3132A

The 3132A Kyoritsu Analogue Insulation Tester has always been a popular choice because of its price and simplicity for insulation testing.

[Read More](#)





10KV HV INSULATION TESTER

SKU: 6310IN

The SEW 10KV HV Insulation Tester tests insulation resistance to 20TΩ and has 4 test voltages 1000V, 2500V, 5000V and 10000V. Other features include Dielectric Absorption Ratio indication and Polarization Index. Furthermore there is a visual and audio warning of live voltages. This Unit comes complete with Data Communication functionality and Software and truly represents fantastic buying.

[Read More](#)



KLEIN NON-CONTACT VOLTAGE TESTER

SKU: NCTV-3



The Klein Non-Contact Voltage Tester is rated to 1000V CATIV. Visual LED bar graph indicates the presence of voltage. The higher the voltage sensed, or the closer to the voltage source, the more LEDs light up. It Features a Bright torch illuminates work area and may be used independently of voltage detection function. The Klein Tough Non Contact Voltage Tester is IP67 Dust and waterproof and has a 2M Drop protection.

[Read More](#)





KLEIN 600A TOUGH CLAMPMETER

SKU: CL800

The Klein 600A Tough Clampmeter is Drop Proof to 2M. It features a low impedance function to eliminate ghost voltages while importantly providing a safety category rating of CAT IV 600V. It has all the Required functions required by Electrical Utility workers and General Electricians.

[Read More](#)



KLEIN CATIV TOUGH MULTIMETER

SKU: MM720

The [Klein CATIV Tough Multimeter](#) is drop proof to 2M. It has all the Required functions required by Electrical Utility workers and General Electricians. It features a low impedance function to eliminate ghost voltages while importantly Providing a safety category rating of CAT IV 600V.

[Read More](#)





NON CONTACT VOLTAGE TESTER PROVING UNIT

SKU: PROVEIT

The PROVEIT Voltage Tester Proving Unit proves the function of non-contact voltage testers before and after use. The EFO Voltage Tester Proving Unit simulates a 230V electric field and comes with a tool bag/belt clip for hands free use.

[Read More](#)



HIGH AND LOW VOLTAGE DETECTOR

SKU: 279HD

The SEW High and Low Voltage detector is a contact style voltage detector. This unit has a working range of 80V-11.4KV and also works on 50 and 60Hz Systems. It has a self test function and has a waterproof rating of IP66.

[Read More](#)





CALIBRATION VERIFICATION CHECK BOX

SKU: CB400AU

The Socket and See CB400AU truly is the ultimate installation testing calibration verification check box. By using the CB400AU you can be assured that your test equipment is operating correctly ensuring that your certification is always accurate. This unit works with all leading makes of Loop, Insulation/Continuity and RCD Testers, both multi function and single operation.

[Read More](#)



IEC TEST LEAD SET CAT IV 600V

SKU: TL-IEC

The EFO IEC Test Lead Set comes with Red, Black Probes and also Red, Black and Green Crocodile Clips. Rated to Cat IV 600V.

[Read More](#)





FUSED TEST LEAD SET CAT IV 500V 10A

SKU: FTL500

The EFO Fused Test Lead Set comes with Red and Black Fused Probes. Rated to Cat IV 500V 10A. Removable test lead caps for attaching alligator clips.

[Read More](#)



7A LOAD UNIT 2000W CAT IV

SKU: L2000W

The EFO Loadlead provides a cost effective and safer method to connect an electrical load whilst testing meter operation at the switchboard. It consists of 2 fused probes, test leads and Socket. Rated at CAT IV 500V you can use the Loadlead with the EFO portable load or any 240V double insulated appliance with a output not exceeding 2000W. Combining Our LOADLEAD together with our 7A Load Unit 2000W you can apply a 7A Load test. The load unit is also supplied with a hanging hook, crocodile clips and a carry bag.

[Read More](#)





HIGH VOLTAGE PHASING METER

SKU: MDP-50K

The MDP-50K multi purpose High Voltage Phasing Meter provides a direct reading voltage measurement as well as phasing capability. The unit has three measurement scales: 4.0kV, 40.0kV, and 50kV AC/DC. It is supplied with universal spline attachments to allow use with any standard fixed hot stick or telescopic hot stick for hot line work.

[Read More](#)



SANWA 5KV DIGITAL INSULATION TESTER

SKU: MG5000

The Sanwa High voltage 5KV Digital Insulation resistance tester for use in measurement of Insulation Resistance of a power line and power equipment within the range of CATIV 600V. The Sanwa 5Kv Insulation tester undoubtedly is the best value for money on the market. Made in Japan it features include. Auto discharge function and. Dielectric absorption ratio. Data hold and also auto power save.

[Read More](#)





SEW TONE CABLE TRACER F-SET

SKU: 181CB

The SEW Tone Cable Tracer is commonly referred to as F Sets. They are one of the simplest ways to trace unpowered cables using a Amplifier probe and also tone generator.

[Read More](#)



PU400 PROVING UNIT 50-690V AC

SKU: PU400

The PU400 Proving Unit provides a safe and reliable means of checking the correct functioning of Multi meters and two pole Voltage Indicators (VIs) before and after use as advised in the Working Practice for electricians. Additionally they have the capability of checking the operation of Non-Contact voltage detectors.

[Read More](#)





PU240 PROVING UNIT 240V AC

SKU: PU240

The PU240 Proving Unit provides a safe and reliable means of checking the correct functioning of Multi meters and two pole Voltage Indicators (VIs) before and after use as advised in the Safe Working Practice For electricians. Additionally they have the capability of checking the Operation of Non-Contact voltage detectors.

[Read More](#)



4 WIRE EARTH RESISTANCE TESTER

SKU: 4234ER

The 4234ER 4 wire earth resistance tester is capable of performing 2-pole, 3-pole and 4-pole ground resistance tests. The 4234ER is a microprocessor controlled, auto-ranging instrument, which makes it easy to use, cutting down the operators input and saving time.

[Read More](#)





NON CONTACT VOLTAGE DETECTOR

SKU: LVD-15

The SEW Non Contact Voltage Detector is intended to check for the presence of AC Voltage, signalling the user with an intermittent tone and a flashing LED. They are used to detect voltage in outlets, lighting fixtures, circuit breakers, wires, and cables or to find a break in a wire.

[Read More](#)



GHOST VOLTAGE BUSTING MULTIMETER 1000V AC/DC TRMS

SKU: GBM1000

Next Generation Multimeter Safety

The New Ghost Voltage Busting Multimeter from EFO Automatically Busts Ghost Voltages Presenting a LoZ low impedance voltage input to the circuit to bleed off any potential ghost voltages the GBM1000 automatically switches to a high impedance input for increased user safety and measurement accuracy.

[Read More](#)





COMPACT EARTH TRAILING LEAD 50M

SKU: ER50

The EFO 50M Compact Earth Trailing Lead connects directly to most brands of test equipment with 4mm banana terminals. Its patented design allows for super fast retrieval. Loaded with 50 meters of green tinned flexible 1.5mm Cable rated at 0.6/1kV. It is also supplied with a 1100mm test lead for meter or accessory connection. Furthermore the cable is dual colour Green/White, to indicate any damage.

[Read More](#)



INDEPENDENT EARTH TRAILING LEAD

SKU: ETL20SS

The EFO Independent Earth Trailing Lead sets a new standard of quality and safety. Combining several uniquely innovative functional features. Developed with leading utilities and equally supporting Australian manufacturing.

[Read More](#)





FUSED TEST LEADS 1000V CATIV 500MA

SKU: FTL1000

Our Fused Test Lead 1000V are specialised lead set. They are also one of the only fused leads sets available rated to CAT IV 1000V.

[Read More](#)



NON-CONTACT PHASE ROTATION METER CAT IV

SKU: PR3NC

Our Non-Contact Phase Rotation Meter has been designed to the highest Safety Rating CAT IV 600V. Our Phase Rotation Meters are designed for Use with Utility workers, ASP Service providers and also electrical contractors.

[Read More](#)





FUSED TEST LAMPS WITH MAGNETIC HOLDER

SKU: MTL2W

Addition features built into the MTL2W series fused test lamps create a very versatile and safe tester. A convenient magnetic holder has also been developed to hang the tester for hands free operation where suitable. Two bright 25W bulbs are fitted with innovative safety guards built into the mould, protecting the user from coming into contact with the lamps. Furthermore decreasing the chance of accidental breakage. 2 x fused 1 metre test leads provide a working span of 2 metres. Our Series Test Lamps are CATIV 500V safety rated and is supplied with 2 x chisel probes, magnetic holder and also a carry bag. Optional changeable probe tips and crocodile clips are available separately.

[Read More](#)



2 TEST LEADS SET CAT IV 600V

SKU: TL-20

Test leads for meters and testers are highly susceptible to poor contact and damage. Our patented screw end offsets the bending oppression, which makes it highly durable and long lasting. Fits most Test Equipment with 4mm Sockets.

[Read More](#)





3 TEST LEADS SET CAT IV 600V

SKU: TL-30

The TL-30 Replacement 3 Test Leads Set has Red and Black and also Green Probes and Crocodile Clips. Rated to safety standard Cat IV 600V 10A. Test leads for meters and testers are highly susceptible to poor contact and damage. Our patented screw end offsets the bending oppression, which makes it highly durable and long lasting. Fits most Test Equipment with 4mm Sockets.

[Read More](#)



TEST LEADS CAT IV 600V

SKU: TL-10

TL-10 Test Leads Red and Black 4MM Banana Plugs Cat IV 600V 10A. Fits most Test Equipment with 4mm Sockets. Test leads for meters and testers are highly susceptible to poor contact and damage. Our patented screw end offsets the bending oppression, which makes it highly durable and long lasting.

[Read More](#)





CONTACT PHASE ROTATION METER CAT IV

SKU: PR3

[Read More](#)



INSULATED CABLE TEST POINT FOR ABC

SKU: PP1514

The EFO Insulated Cable test point is suitable for ABC cable ranges up to 150mm². Connects to standard 4mm banana plug.

[Read More](#)





SANWA DIGITAL INSULATION TESTER

SKU: MG1000

The Sanwa Digital insulation Tester is also built in Japan. It features Fast Response without digital flicker. As Well as a large log scaled bargraph. Furthermore it has a strong and durable hard case. This Unit is Equally great value. Safety features include Voltage Warning and Voltage interlock.

[Read More](#)



NON-CONTACT HIGH VOLTAGE DETECTOR

SKU: HP300

The HP300 is a IP66 water-proof designed proximity tester for checking the presence of AC high and low voltages. It also has nine voltage detection settings from 240Vac to 275kVac. The Non-Contact High Voltage Detector provides detection of AC voltages with an internal pickup sensor plate. It attaches attaches via a sunrise fitting coupled with a Hot stick

[Read More](#)





100M EARTH TRAILING LEAD

SKU: ETL100

The EFO 100M Earth Trailing Lead is a high quality portable cable reel supplied with 100 metres of flexible cable 1.5mm 30/0.25. Furthermore it features only Quality Components. Our Earth Trailing Lead Connects directly to most brands of test equipment. Equipped with One alligator clip and two 4mm banana plugs. It is also supplied with a temporary independent earth stake. The cable is calibrated and resistance is marked on the Trailing Lead. The Earth Trailing Lead is also available in a 50M Version.

[Read More](#)



50M EARTH TRAILING LEAD

SKU: ETL50

The EFO 50M Earth Trailing Lead is a high quality portable cable reel supplied with 50 metres of flexible cable 1.5mm 30/0.25. Furthermore it features only Quality Components. Our Earth Trailing Lead Connects directly to most brands of test equipment. Equipped with One alligator clip and two 4mm banana plugs. It is also supplied with a temporary independent earth stake. The cable is calibrated and resistance is marked on the Trailing Lead. The Earth Trailing Lead is also available in 100M Version.

[Read More](#)





MULTI FUNCTION INSTALLATION TESTER

SKU: MFT4PLUS

New MFT4PLUS Model Available Now

This One Digital Multi function Installation Tester Covers Safety, Fault Finding & Compliance for installations, switchboards, socket outlets, plant & machinery. Built for AS/NZS: 3000 Mandatory Testing Requirements. The MFT4PLUS is a true multi-function tester. Loaded with powerful features that are readily accessible by the selector switch and clearly marked push buttons. Compared to other brands the EFO MFT4PLUS has no complex menu or start up procedures to navigate. A large back lit LCD screen displays high accuracy results and also benefits from the latest in the digital microprocessor technology which delivers stable readings without digit flicker.

[Read More](#)



TEST LEADS AND ACCESSORIES

EFO manufactures and distributes a range of high quality Earth Trailing Leads and Test leads and Accessories. Our products include our innovative Independent Earth Trailing lead. Compact Earth and Neutral Reels. 50 and 100M Trailing leads on portable reels. We also supply Replacement test lead sets, Probes, Crocodile Clips etc. Customised products and configurations can also be manufactured upon request. All of our products can usually be used in conjunction with most electrical Test Equipment. We Supply Test leads and Accessories for Utilitys and Electrical Contractors. Please contact the Sales team at EFO for further product information.



CONVENIENT EXTENSION TEST LEAD

SKU: TR25-G

The New TR25-G Convenient Extension Test Lead can be used as a trailing lead or in situations where longer test leads are required to connect to test instruments. They can also be connected together for a longer run. Supplied with 25m of flexible cable. The 130mm diameter compact design allows the TR25 Extension Test Lead to fit into tool bags or back packs. Test Cable is easily wound back onto the reel for fast retrieval. A selector switch enables the reel to run free, under tension or stop. This product is also available in CATIV600V Red and Black test lead configurations.

[Read More](#)





EXTENDED INDEPENDENT EARTH TRAILING LEAD

SKU: ETL20SS-L

The EFO ETL20SS-L Extended Independent Earth Trailing Lead sets a new standard of quality and safety. The 645mm Earth Stake was designed for customers with applications in [Loam](#) soil environments. The standard [ETL20SS](#) overall length is 400mm and is used for general applications. Combining several uniquely innovative functional features. Developed with leading utilities and equally supporting Australian manufacturing.

[Read More](#)



3 PIN TEST LEAD SET FOR GPOS

SKU: TL-PIN

The TL-PIN 3 Pin Test Lead Set has a Red, Black and Green banana plugs and can be connected to most [Test Equipment](#) with 4mm Sockets. This Lead Set is generally used for connection of RCD and Loop impedance testers to Australian and New Zealand socket outlets. This lead set can also be used as the replacement socket connection for the EFO [MFT4](#) Multifunction tester and the [Autotrip](#) RCD tester.

[Read More](#)





STRAIGHT TEST LEAD SET CAT IV 600V

SKU: TL-RGB

The TL-RGB Straight Test Lead Set has Red and Black and also Green Probes and Crocodile Clips. This set has straight connection plugs for where a right angle plug cannot fit due to obstructions on the test equipment case. Rated to safety standard Cat IV 600V 10A. Test leads for meters and testers are highly susceptible to poor contact and damage. Our patented screw end offsets the bending oppression, which makes it highly durable and long lasting. The TL-RGB fits most test equipment with 4mm Sockets and is the preferred replacement lead set for the EFO [MFT4](#) and [AUTOTRIP](#).

[Read More](#)



LANTERN TEST LEAD SET CAT IV 600V

SKU: TL-L

This Lantern test lead Set has Red and Black Lantern Probes that fit into 4mm banana terminals. Rated to safety standard Cat IV 600V 10A. Test leads for meters and testers are highly susceptible to poor contact and damage. Our patented screw end offsets the bending oppression, which makes it highly durable and long lasting.

[Read More](#)





GPO TEST LEAD SET

SKU: TL-C

Sick of damaging or breaking your multimeter test probes. This GPO Test Lead Set is manufactured with flat chisel tips designed to easily fit into GPOs without damaging the socket outlet or the probes. This test lead set is rated at CATIV 600V with the caps on and CATII 1000V when removed.

[Read More](#)



POWER POINT TEST LEADS WITH CROC CLIPS

SKU: TL-CC

Sick of damaging or breaking your multimeter test probes. These Power Point Test Leads are manufactured with flat chisel tips designed to easily fit into GPOs without damaging the socket outlet or the probes. This test lead set is rated at CATIV 600V with the caps on and CATII 1000V when removed. This set also comes complete with Red/Black Crocodile clips for additional testing applications.

[Read More](#)





IEC TEST LEAD SET CAT IV 600V

SKU: TL-IEC

The EFO IEC Test Lead Set comes with Red, Black Probes and also Red, Black and Green Crocodile Clips. Rated to Cat IV 600V.

[Read More](#)



FUSED TEST LEAD SET CAT IV 500V 10A

SKU: FTL500

The EFO Fused Test Lead Set comes with Red and Black Fused Probes. Rated to Cat IV 500V 10A. Removable test lead caps for attaching alligator clips.

[Read More](#)





COMPACT EARTH TRAILING LEAD 50M

SKU: ER50

The EFO 50M Compact Earth Trailing Lead connects directly to most brands of test equipment with 4mm banana terminals. Its patented design allows for super fast retrieval. Loaded with 50 meters of green tinned flexible 1.5mm Cable rated at 0.6/1kV. It is also supplied with a 1100mm test lead for meter or accessory connection. Furthermore the cable is dual colour Green/White, to indicate any damage.

[Read More](#)



INDEPENDENT EARTH TRAILING LEAD

SKU: ETL20SS

The EFO Independent Earth Trailing Lead sets a new standard of quality and safety. Combining several uniquely innovative functional features. Developed with leading utilities and equally supporting Australian manufacturing.

[Read More](#)





FUSED TEST LEADS 1000V CATIV 500MA

SKU: FTL1000

Our Fused Test Lead 1000V are specialised lead set. They are also one of the only fused leads sets available rated to CAT IV 1000V.

[Read More](#)



2 TEST LEADS SET CAT IV 600V

SKU: TL-20

Test leads for meters and testers are highly susceptible to poor contact and damage. Our patented screw end offsets the bending oppression, which makes it highly durable and long lasting. Fits most Test Equipment with 4mm Sockets.

[Read More](#)





3 TEST LEADS SET CAT IV 600V

SKU: TL-30

The TL-30 Replacement 3 Test Leads Set has Red and Black and also Green Probes and Crocodile Clips. Rated to safety standard Cat IV 600V 10A. Test leads for meters and testers are highly susceptible to poor contact and damage. Our patented screw end offsets the bending oppression, which makes it highly durable and long lasting. Fits most Test Equipment with 4mm Sockets.

[Read More](#)



TEST LEADS CAT IV 600V

SKU: TL-10

TL-10 Test Leads Red and Black 4MM Banana Plugs Cat IV 600V 10A. Fits most Test Equipment with 4mm Sockets. Test leads for meters and testers are highly susceptible to poor contact and damage. Our patented screw end offsets the bending oppression, which makes it highly durable and long lasting.

[Read More](#)





INSULATED CABLE TEST POINT FOR ABC

SKU: PP1514

The EFO Insulated Cable test point is suitable for ABC cable ranges up to 150mm². Connects to standard 4mm banana plug.

[Read More](#)



100M EARTH TRAILING LEAD

SKU: ETL100

The EFO 100M Earth Trailing Lead is a high quality portable cable reel supplied with 100 metres of flexible cable 1.5mm 30/0.25. Furthermore it features only Quality Components. Our Earth Trailing Lead Connects directly to most brands of test equipment. Equipped with One alligator clip and two 4mm banana plugs. It is also supplied with a temporary independent earth stake. The cable is calibrated and resistance is marked on the Trailing Lead. The Earth Trailing Lead is also available in a 50M Version.

[Read More](#)





50M EARTH TRAILING LEAD

SKU: ETL50

The EFO 50M Earth Trailing Lead is a high quality portable cable reel supplied with 50 metres of flexible cable 1.5mm 30/0.25. Furthermore it features only Quality Components. Our Earth Trailing Lead Connects directly to most brands of test equipment. Equipped with One alligator clip and two 4mm banana plugs. It is also supplied with a temporary independent earth stake. The cable is calibrated and resistance is marked on the Trailing Lead. The Earth Trailing Lead is also available in 100M Version.

[Read More](#)



MULTI FUNCTION TESTERS

This One Multi function Installation Tester Covers Safety, Fault Finding & Compliance for installations, switchboards, socket outlets, plant & machinery. Built for AS/NZS: 3000 Mandatory Testing Requirements.

The Appa Insulation Tester and Multimeter is the ideal multi function tester for all electrical workers. This Utility grade Meter is also suitable for any CATIV 600V Zones. Packed with a large range of features.

Furthermore we select with best quality and value products. Consequently Saving you time on confusing options.



MULTI FUNCTION INSTALLATION TESTER

SKU: MFT4PLUS

[New MFT4PLUS Model Available Now](#)

This One Digital Multi function Installation Tester Covers Safety, Fault Finding & Compliance for installations, switchboards, socket outlets, plant & machinery. Built for AS/NZS: 3000 Mandatory Testing Requirements. The MFT4PLUS is a true multi-function tester. Loaded with powerful features that are readily accessible by the selector switch and clearly marked push buttons. Compared to other brands the EFO MFT4PLUS has no complex menu or start up procedures to navigate. A large back lit LCD screen displays high accuracy results and also benefits from the latest in the digital microprocessor technology which delivers stable readings without digit flicker.

[Read More](#)



RCD TEST EQUIPMENT

EFO supplies high quality RCD Test Equipment to comply with the mandatory safety requirements of AS/NZS 3000 and AS/NZS3760. Test functions of these RCD Testers include Ramp. Trip Time tests with a pass/fail displayed in accordance to AS/NZS3000 limits. Our RCD testers also include Automatic testing. Hands free and recall of results. These RCD Testers are essential for every electrician or technician conducting regular RCD testing and recording results. Furthermore we select with best quality and value products. Consequently Saving you time on confusing options.



MULTI FUNCTION INSTALLATION TESTER

SKU: MFT4PLUS

New MFT4PLUS Model Available Now

This One Digital Multi function Installation Tester Covers Safety, Fault Finding & Compliance for installations, switchboards, socket outlets, plant & machinery. Built for AS/NZS: 3000 Mandatory Testing Requirements. The MFT4PLUS is a true multi-function tester. Loaded with powerful features that are readily accessible by the selector switch and clearly marked push buttons. Compared to other brands the EFO MFT4PLUS has no complex menu or start up procedures to navigate. A large back lit LCD screen displays high accuracy results and also benefits from the latest in the digital microprocessor technology which delivers stable readings without digit flicker.

[Read More](#)



INSULATION RESISTANCE TESTERS

EFO distributes a range of Analogue and Digital Insulation Resistance Testers. Especially designed for the Electrical Trade and Utility applications. Without a doubt you will get the best value and quality for money. Our Analogue and Digital Insulation testers voltage ranges include 250V/500V/1000V. All have Low Ohm functions for electrical resistance testing. All of our Insulation Resistance Testers can be issued with a Test Report or Calibration Certificate. In Addition for higher Voltages we offer the Sanwa High voltage 5KV Digital Insulation resistance tester. Used in measurement of Insulation Resistance of a power line and power equipment within the range of CAT IV 600V. Furthermore we select with best quality and value products. Consequently Saving you time on confusing options.



EFO ANALOGUE INSULATION TESTER

SKU: IRA1000

The IRA1000 EFO Analogue Insulation Tester has always been a popular choice because of its price and simplicity for insulation testing. This insulation tester comes with the factory calibration certificate and test report.

[Read More](#)





KYORITSU ANALOGUE INSULATION TESTER

SKU: 3132A

The 3132A Kyoritsu Analogue Insulation Tester has always been a popular choice because of its price and simplicity for insulation testing.

[Read More](#)



10KV HV INSULATION TESTER

SKU: 6310IN

The SEW 10KV HV Insulation Tester tests insulation resistance to 20TΩ and has 4 test voltages 1000V, 2500V, 5000V and 10000V. Other features include Dielectric Absorption Ratio indication and Polarization Index. Furthermore there is a visual and audio warning of live voltages. This Unit comes complete with Data Communication functionality and Software and truly represents fantastic buying.

[Read More](#)





SANWA 5KV DIGITAL INSULATION TESTER

SKU: MG5000

The Sanwa High voltage 5KV Digital Insulation resistance tester for use in measurement of Insulation Resistance of a power line and power equipment within the range of CATIV 600V. The Sanwa 5Kv Insulation tester undoubtedly is the best value for money on the market. Made in Japan it features include. Auto discharge function and. Dielectric absorption ratio. Data hold and also auto power save.

[Read More](#)



SANWA DIGITAL INSULATION TESTER

SKU: MG1000

The Sanwa Digital insulation Tester is also built in Japan. It features Fast Response without digital flicker. As Well as a large log scaled bargraph. Furthermore it has a strong and durable hard case. This Unit is Equally great value. Safety features include Voltage Warning and Voltage interlock.

[Read More](#)





MULTI FUNCTION INSTALLATION TESTER

SKU: MFT4PLUS

New MFT4PLUS Model Available Now

This One Digital Multi function Installation Tester Covers Safety, Fault Finding & Compliance for installations, switchboards, socket outlets, plant & machinery. Built for AS/NZS: 3000 Mandatory Testing Requirements. The MFT4PLUS is a true multi-function tester. Loaded with powerful features that are readily accessible by the selector switch and clearly marked push buttons. Compared to other brands the EFO MFT4PLUS has no complex menu or start up procedures to navigate. A large back lit LCD screen displays high accuracy results and also benefits from the latest in the digital microprocessor technology which delivers stable readings without digit flicker.

[Read More](#)



DIGITAL MULTIMETERS CAT IV

EFO supply's Digital Multimeters CAT IV for Utility's, ASPs, Metering Installers and Electrical Contractors. Our products are suited for Industrial, Commercial and Domestic environments. Our range of High Quality Digital Multimeters specifically all provide the essential relevant safety category of CAT IV 600V. Furthermore we select with best quality and value products. Consequently Saving you time on confusing options.



KLEIN CATIV TOUGH MULTIMETER

SKU: MM720

The [Klein CATIV Tough Multimeter](#) is drop proof to 2M. It has all the Required functions required by Electrical Utility workers and General Electricians. It features a low impedance function to eliminate ghost voltages while importantly Providing a safety category rating of CAT IV 600V.

[Read More](#)





GHOST VOLTAGE BUSTING MULTIMETER 1000V AC/DC TRMS

SKU: GBM1000

Next Generation Multimeter Safety

The New Ghost Voltage Busting Multimeter from EFO Automatically Busts Ghost Voltages Presenting a LoZ low impedance voltage input to the circuit to bleed off any potential ghost voltages the GBM1000 automatically switches to a high impedance input for increased user safety and measurement accuracy.

[Read More](#)



DIGITAL CLAMP METERS

EFO is a Australian distributor of high quality Digital Clamp Meters from Sanwa, Mastech and Klein. We supply Digital Clamp Meters for Utility, Industrial, Commercial and Domestic Applications. Our Range of clamp meters are available in CAT III and CAT IV with both AC and DC Functions. Our

Clamp meters can be supplied with Calibration Certificates. Furthermore we select with best quality and value products. Consequently Saving you time on confusing options.



KLEIN LOW-IMPEDANCE CLAMP METER

SKU: CL700

The Klein Low-Impedance Clamp meter is Drop Proof to 2M. It features a low impedance function to eliminate ghost voltages while importantly Providing a safety category rating of CAT IV 600V. It has all the Required functions required by Electrical Utility workers and General Electricians. Test leads measure the AC/DC voltage, resistance, continuity, frequency and capacitance and test the diodes. Thermocouple probe measures the temperature.

[Read More](#)





FLEXIBLE COIL CURRENT SENSOR 1000A

SKU: CA1000

The EFO [GBM1000](#) multimeter provides a designated AC Clamp function designed for use with the CA1000 displaying accurate current measurements directly in Amps.

[Read More](#)



SANWA 1000A CLAMP METER CAT IV 600V

SKU: DCM301

The Sanwa 1000A Clamp Meter is designed for measurements of low-voltage circuits in the application range of 1000V CAT III and 600V CAT IV. It is suited to current and voltage measurement of power lines, electrical equipment, and electrical facilities less than 1000Vrms to ground.

[Read More](#)





SANWA 2000A CLAMP METER

SKU: DCM2000DR

This instrument is an AC/DC clamp meter/digital multimeter of the RMS value response type, designed for measurements in the range specified by IEC61010-1 CAT.IV 1000V. It is suitable for current and voltage measurements of low-voltage circuitry, electric equipment and power supply facilities.

[Read More](#)



SANWA LEAKAGE CLAMP METER

SKU: DLC470

The Sanwa Leakage Clamp Meter is very useful for measuring earth leakage or load current on power circuits, RCDs and electrical equipment. This meter is extremely accurate and is must for any serious electrician conducting fault finding tasks.

[Read More](#)





KLEIN 600A TOUGH CLAMPMETER

SKU: CL800

The Klein 600A Tough Clampmeter is Drop Proof to 2M. It features a low impedance function to eliminate ghost voltages while importantly providing a safety category rating of CAT IV 600V. It has all the Required functions required by Electrical Utility workers and General Electricians.

[Read More](#)



EFO PROVING UNITS

EFO Manufacturers a range of battery powered true AC waveform output proving units. Our proving units provide a safe and reliable means of checking the correct functioning of Multi meters and two pole voltage indicators. before and after use as advised in the safe working practice for electricians. The test voltage generated is at 50Hz to synthesise a genuine test at AC mains supply frequency. Additionally they have the capability of checking the Operation of Non-Contact voltage detectors. Furthermore we select with best quality and value products. Consequently Saving you time on confusing options.

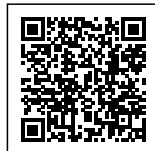


PROVING UNIT FOR HV NON-CONTACT DETECTORS

SKU: HVNCT300

This Proving Unit for HV Non-Contact Detectors is designed to be used in conjunction with High Voltage non-contact voltage detectors such as the [HP300](#). The Unit produces an EMF (Electro-magnetic field) which can be detected to prove the detector it is working correctly. They produce enough EMF to allow HV Non-Contact detectors to be tested at up to 500,000 volt at a distance of 50 mm.

[Read More](#)





NON CONTACT VOLTAGE TESTER PROVING UNIT

SKU: PROVEIT

The PROVEIT Voltage Tester Proving Unit proves the function of non-contact voltage testers before and after use. The EFO Voltage Tester Proving Unit simulates a 230V electric field and comes with a tool bag/belt clip for hands free use.

[Read More](#)



PU400 PROVING UNIT 50-690V AC

SKU: PU400

The PU400 Proving Unit provides a safe and reliable means of checking the correct functioning of Multi meters and two pole Voltage Indicators (VIs) before and after use as advised in the Working Practice for electricians. Additionally they have the capability of checking the operation of Non-Contact voltage detectors.

[Read More](#)





PU240 PROVING UNIT 240V AC

SKU: PU240

The PU240 Proving Unit provides a safe and reliable means of checking the correct functioning of Multi meters and two pole Voltage Indicators (VIs) before and after use as advised in the Safe Working Practice For electricians. Additionally they have the capability of checking the Operation of Non-Contact voltage detectors.

[Read More](#)



LOAD TESTER UNITS

Load Tester Units are used as an Electrical load on kWh power meters. When testing at the switchboard to ensure the correct operation and functionality of the meters. All our Load Tester Units offer CAT IV Safety rating for the User. All Units also come complete with storage bag and accessories. EFO also supplies a full range of metering test equipment and PPE. Furthermore we select with best quality and value products. Consequently Saving you time on confusing options.



7A LOAD UNIT 2000W CAT IV

SKU: L2000W

The EFO Loadlead provides a cost effective and safer method to connect an electrical load whilst testing meter operation at the switchboard. It consists of 2 fused probes, test leads and Socket. Rated at CAT IV 500V you can use the Loadlead with the EFO portable load or any 240V double insulated appliance with a output not exceeding 2000W. Combining Our LOADLEAD together with our 7A Load Unit 2000W you can apply a 7A Load test. The load unit is also supplied with a hanging hook, crocodile clips and a carry bag.

[Read More](#)



LOOP IMPEDANCE TESTERS

EFO Fault Loop Impedance Testers and Impedance testers are designed for Utility, Industrial, Commercial and Domestic Electrical workers. Our Range of Impedance Testers feature all round testing as well as specialist units for Utilities and Accredited Service Providers.



M1120-V2-B BLUETOOTH NST NEUTRAL AND SUPPLY TESTER

SKU: M1120KIT-B

The Dewar M1120-V2 NST Neutral and Supply Tester was designed in conjunction with Power companies. To ensure the incoming Active and Neutral power connections to customer's premises are correctly identified and are safe to use before a power connection is made. EFO also supplies NST testing accessories and personal protective equipment. This is Bluetooth model for NSW and ACT only, as the maximum neutral to earth voltage is 10 volts. Click here for NST M1120-V2-B Neutral Supply Tester for QLD, SA and VIC.

[Read More](#)





M1121-V2-B BLUETOOTH NST NEUTRAL AND SUPPLY TESTER

SKU: M1121KIT-B

The Dewar M1121-V2 NST Neutral and Supply Tester was designed in conjunction with Power companies. To ensure the incoming Active and Neutral power connections to customer's premises are correctly identified and are safe to use before a power connection is made. EFO also supplies NST testing accessories and personal protective equipment. This is Bluetooth model for NSW and ACT only, as the maximum neutral to earth voltage is 10 volts. Click here for NST M1120-V2-B Neutral Supply Tester for QLD, SA and VIC.

[Read More](#)



MULTI FUNCTION INSTALLATION TESTER

SKU: MFT4PLUS

[New MFT4PLUS Model Available Now](#)

This One Digital Multi function Installation Tester Covers Safety, Fault Finding & Compliance for installations, switchboards, socket outlets, plant & machinery. Built for AS/NZS: 3000 Mandatory Testing Requirements. The MFT4PLUS is a true multi-function tester. Loaded with powerful features that are readily accessible by the selector switch and clearly marked push buttons. Compared to other brands the EFO MFT4PLUS has no complex menu or start up procedures to navigate. A large back lit LCD screen displays high accuracy results and also benefits from the latest in the digital microprocessor technology which delivers stable readings without digit flicker.

[Read More](#)



PHASE ROTATION METERS

Our Phase Rotation Meters have been designed to offer the highest Safety Rating CATIV 600V. The EFO range offers both contact and also non-contact versions. Our Phase Rotation Meters are designed for Use with Utility workers. ASP Service providers. Industrial. Commercial and General Electricians. Furthermore we select with best quality and value products. Consequently Saving you time on confusing options.



NON-CONTACT PHASE ROTATION METER 2M LEADS

SKU: PR3NC-2M

Our Non-Contact Phase Rotation Meter with 2M leads has been designed to for utility customers with 2M leads and CAT IV 600V Safety rating. Our Phase Rotation Meters are designed for Use with Utility workers, ASP Service providers and also electrical contractors.

[Read More](#)



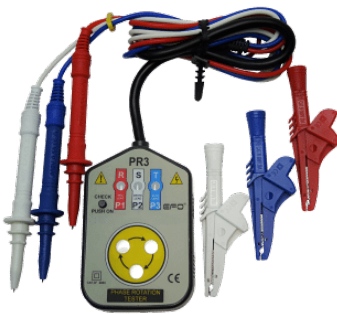


NON-CONTACT PHASE ROTATION METER CAT IV

SKU: PR3NC

Our Non-Contact Phase Rotation Meter has been designed to the highest Safety Rating CAT IV 600V. Our Phase Rotation Meters are designed for Use with Utility workers, ASP Service providers and also electrical contractors.

[Read More](#)



CONTACT PHASE ROTATION METER CAT IV

SKU: PR3

[Read More](#)



VOLTAGE TESTERS AND INDICATORS

EFO Manufactures and Distributes a range of high quality contact and non contact voltage testers and indicators. Designed for Utility. Industrial. Commercial and Domestic Electrical workers. All of our Voltage Testers are developed to offer the highest safety rating. They also have features that you will not find in other Test Equipment brands. Furthermore we select with best quality and value products. Consequently Saving you time on confusing options.



EFO CONTACTLESS VOLTAGE TESTER

SKU: VS50

The EFO contactless voltage tester has been designed to meet the high quality and specifications required by Australian utilities and service providers. The operating range is 50-1000V with a overvoltage safety category rating of CAT IV 1000V. Furthermore the EFO VS50 contactless voltage tester features a self test and is contained in a IP65 rugged waterproof housing.

[Read More](#)





CONTACT HIGH VOLTAGE DETECTOR 11KV

SKU: 213HVD

This Contact High Voltage Detector has been designed to meet the latest IEC standards. The HVDs are used to determine whether a system is live or not so that it may be safely earthed/grounded. It is self starting and automatically activated when high voltage is applied to the contact electrode.

[Read More](#)



SANWA VOLTAGE DETECTOR SUPPORTER

SKU: KDP10



The Sanwa Voltage Detector Supporter is a device to prevent erroneous cutting of live wires due to misjudgement. Before cutting, you can see if the wiring is live. It is designed to be attached to electricians pliers. When the cable is live the product notifies you with a alarm and LED indication. The product is not to be used in place of a voltage detector or multimeter in testing for dead.

[Read More](#)



KLEIN NON-CONTACT VOLTAGE TESTER

SKU: NCTV-3



The Klein Non-Contact Voltage Tester is rated to 1000V CATIV. Visual LED bar graph indicates the presence of voltage. The higher the voltage sensed, or the closer to the voltage source, the more LEDs light up. It Features a Bright torch illuminates work area and may be used independently of voltage detection function. The Klein Tough Non Contact Voltage Tester is IP67 Dust and waterproof and has a 2M Drop protection.

[Read More](#)



HIGH AND LOW VOLTAGE DETECTOR

SKU: 279HD

The SEW High and Low Voltage detector in a contact style voltage detector. This unit has a working range of 80V-11.4KV and also works on 50 and 60Hz Systems. It Has a self test function and has a waterproof rating of IP66.

[Read More](#)





HIGH VOLTAGE PHASING METER

SKU: MDP-50K

The MDP-50K multi purpose High Voltage Phasing Meter provides a direct reading voltage measurement as well as phasing capability. The unit has three measurement scales: 4.0kV, 40.0kV, and 50kV AC/DC. It is supplied with universal spline attachments to allow use with any standard fixed hot stick or telescopic hot stick for hot line work.

[Read More](#)



NON CONTACT VOLTAGE DETECTOR

SKU: LVD-15

The SEW Non Contact Voltage Detector is intended to check for the presence of AC Voltage, signalling the user with an intermittent tone and a flashing LED. They are used to detect voltage in outlets, lighting fixtures, circuit breakers, wires, and cables or to find a break in a wire.

[Read More](#)





FUSED TEST LAMPS WITH MAGNETIC HOLDER

SKU: MTL2W

Addition features built into the MTL2W series fused test lamps create a very versatile and safe tester. A convenient magnetic holder has also been developed to hang the tester for hands free operation where suitable. Two bright 25W bulbs are fitted with innovative safety guards built into the mould, protecting the user from coming into contact with the lamps. Furthermore decreasing the chance of accidental breakage. 2 x fused 1 metre test leads provide a working span of 2 metres. Our Series Test Lamps are CATIV 500V safety rated and is supplied with 2 x chisel probes, magnetic holder and also a carry bag. Optional changeable probe tips and crocodile clips are available separately.

[Read More](#)



NON-CONTACT HIGH VOLTAGE DETECTOR

SKU: HP300



The HP300 is a IP66 water-proof designed proximity tester for checking the presence of AC high and low voltages. It also has nine voltage detection settings from 240Vac to 275kVac. The Non-Contact High Voltage Detector provides detection of AC voltages with an internal pickup sensor plate. It attaches attaches via a sunrise fitting coupled with a Hot stick

[Read More](#)



NETWORK TESTERS

EFO is the Distributor for Dewar NST Network Testers. The Neutral and Supply Tester was designed in conjunction with Power companies. To ensure the incoming Active and Neutral power connections. To customer's premises are correctly identified and safe. They are use before a power connection is made. Our ETL20SS Independent Earth Trailing Lead is also used in conjunction with this product. EFO Also supplies a Cable Tracer and Tone Generator for telecommunications and dead Electrical cables.



M1120-V2-B BLUETOOTH NST NEUTRAL AND SUPPLY TESTER

SKU: M1120KIT-B

The Dewar M1120-V2 NST Neutral and Supply Tester was designed in conjunction with Power companies. To ensure the incoming Active and Neutral power connections to customer's premises are correctly identified and are safe to use before a power connection is made. EFO also supplies NST testing accessories and personal protective equipment. This is Bluetooth model for NSW and ACT only, as the maximum neutral to earth voltage is 10 volts. [Click here for NST M1120-V2-B Neutral Supply Tester for QLD, SA and VIC.](#)



[Read More](#)





M1121-V2-B BLUETOOTH NST NEUTRAL AND SUPPLY TESTER

SKU: M1121KIT-B

The Dewar M1121-V2 NST Neutral and Supply Tester was designed in conjunction with Power companies. To ensure the incoming Active and Neutral power connections to customer's premises are correctly identified and are safe to use before a power connection is made. EFO also supplies NST testing accessories and personal protective equipment. This is Bluetooth model for NSW and ACT only, as the maximum neutral to earth voltage is 10 volts. Click here for NST M1120-V2-B Neutral Supply Tester for QLD, SA and VIC.

[Read More](#)



SEW TONE CABLE TRACER F-SET

SKU: 181CB

The SEW Tone Cable Tracer is commonly referred to as F Sets. They are one of the simplest ways to trace unpowered cables using a Amplifier probe and also tone generator.

[Read More](#)



CALIBRATION INSTRUMENTS

EFO Supplies a range of Calibration Instruments. The Socket and See CB400AU is unquestionably the ultimate installation testing calibration check box. By using this calibration check box you can be assured that your test equipment is operating correctly ensuring that your certification is always accurate. The CB400AU works with all leading makes of Loop, Insulation/Continuity and RCD Testers, both multi function and also single operation.



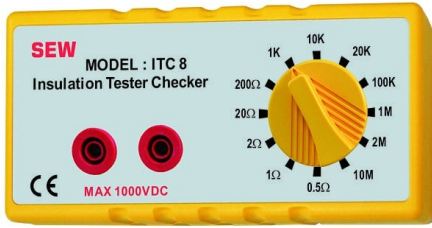
INSULATED GLOVE INFLATOR TESTER

SKU: GLOVEIN

The EFO Insulated Glove Inflator Tester is a portable device that conducts a air test on Insulated gloves and assists users during visual inspection to search for any abrasion, cuts, tears or punctures. Our Glove inflator can be used anywhere and comes with a durable storage bag made out of canvas and a strap to hold the rubber insulating glove in place.

[Read More](#)





SEW ITC8 CHECK BOX

SKU: ITC8

The SEW ITC8 Check Box provides a quick check to ensure the instrument being used is reading accurately. This resistor block allows the user to regularly verify the measurements taken by their insulation tester or multi meter. The check box has 12 resistance settings ranging from 0.5 Ohms to 10MOhms to check against.

[Read More](#)



CALIBRATION VERIFICATION CHECK BOX

SKU: CB400AU

The Socket and See CB400AU truly is the ultimate installation testing calibration verification check box. By using the CB400AU you can be assured that your test equipment is operating correctly ensuring that your certification is always accurate. This unit works with all leading makes of Loop, Insulation/Continuity and RCD Testers, both multi function and single operation.

[Read More](#)



EARTH RESISTANCE TESTERS

EFO Supply's a quality range of cost effective Earth Resistance Testers. 3 and 4 Wire Earth Resistance Testers are among the options available. Furthermore we select with best quality and value products. Consequently Saving you time on confusing options.



4 WIRE EARTH RESISTANCE TESTER

SKU: 4234ER

The 4234ER 4 wire earth resistance tester is capable of performing 2-pole, 3-pole and 4-pole ground resistance tests. The 4234ER is a microprocessor controlled, auto-ranging instrument, which makes it easy to use, cutting down the operators input and saving time.

[Read More](#)



MISCELLANEOUS TEST EQUIPMENT

Miscellaneous Test Equipment from
Electrical Factory Outlet.



THERMAL IMAGER FOR IOS DEVICES

SKU: TI222

The Klein Tools TI222 Thermal Imager for iOS Devices has 10,800 pixels delivering excellent resolution to troubleshoot hot and cold spots. This Thermal Imager is perfect for detecting hot spots in panels, on wiring, or on parts of equipment; helping find sources of energy loss within a home/building; helps detect moisture behind walls and flooring; clogs in pipes; and much more. Fits phone cases up to 1/16-Inch (1.5 mm). Phone cases thicker than 1/16-Inch (1.5 mm) may require removal of case for secure connection. Easily capture, store, and share thermal images and video through the Klein Tools Thermal Imager App, available for free in the App Store.

[Read More](#)





SEW DIGITAL MILLIOHM METER

SKU: 4137MO

The microprocessor controlled SEW Digital Milliohm Meter comes supplied from EFO with a set of high quality kelvin test leads to assist in making accurate measurements.

[Read More](#)



SAFETY PRODUCTS



3 PHASE PLUG AND HOSE LOCKOUT

SKU: PL3PHASE

This 3 Phase Plug and hose lockout is made from high impact plastic and is suitable for lockout of most 415V 3 Phase Plugs. Electrical Plug and Hose lockout devices are used for Lockout and Tagout when the plug is not under the exclusive control of the person performing service or maintenance.

[Read More](#)





POLE TOP DESCENDER KIT

SKU: PTR

The EFO Pole Top Descender kit is suitable for customers that would already have existing PPE components required for pole top rescue .

[Read More](#)



POLE TOP RESCUE KIT

SKU: PTRKIT

The EFO Pole Top Rescue Kit is designed for rescuing a casualty suspended from their work position and fall arrest equipment when working on a pole. No assembly is required by the user. A safety knife is included in case of difficulty releasing the casualty. The rescuer accesses the casualty in order to recover them from the pole.

[Read More](#)





ARC FLASH SWITCHING JACKET 9 CAL/CM2 870MM

SKU: EASCJT9

The ArcSafe® 9 cal/cm2 HRC2 ArcFlash Switching Jacket are inherently flame resistant, providing protection against electrical arc flashes and flash fires.

[Read More](#)



ARC FLASH SWITCHING COAT 9 CAL/CM2 1300MM

SKU: EASCCT9

The ArcSafe® 9 cal/cm2 HRC2 ArcFlash Switching Coat are inherently flame resistant, providing protection against electrical arc flashes and flash fires.

[Read More](#)





DECO INDUSTRIAL HV LEATHER OUTERS

SKU: EOHVC

Deco HV leather over gloves are specifically designed for the use with high voltage insulating gloves. They are sized larger to allow easy fit over thicker HV Insulated gloves. Sizes are available from 8 through to 11.

[Read More](#)



INSULATED GLOVE INFLATOR TESTER

SKU: GLOVEIN

The EFO Insulated Glove Inflater Tester is a portable device that conducts a air test on Insulated gloves and assists users during visual inspection to search for any abrasion, cuts, tears or punctures. Our Glove inflater can be used anywhere and comes with a durable storage bag made out of canvas and a strap to hold the rubber insulating glove in place.

[Read More](#)



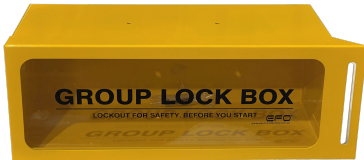


DIELECTRIC SAFETY BOOTS 20KV

SKU: DSBOOT

These Dielectric Safety Boots 20KV supplied by EFO are of the Highest specification, fully waterproof and hand-built. Manufactured with specially formulated insulating layers offering electrical protection over the whole boot.

[Read More](#)



GROUP LOCK BOX WALL MOUNTED

SKU: GLBOX-WMY

This Group Lock box Wall Mounted has a transparent poly carbonate window to let you view contents from the outside. It can be mounted in various positions and is bright yellow in colour for easy identification.

[Read More](#)





ELECTRICAL INSTALLATION IN PROGRESS SIGN 450MM X 300MM

SKU: EIPSIGN

The Electrical Installation in Progress sign is required by Level 2 Asps Contractors or Meter Installers when working on a electrical installation.

[Read More](#)



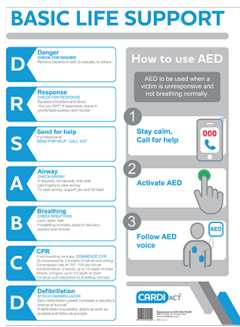
KEYED ALIKE LOCKOUT PADLOCKS 10 PACK

SKU: PBL410KA10

EFO Keyed Alike Lockout Padlocks are designed specifically for use in Lockout/Tagout applications. These Padlocks are compact yet rugged and have a body that is tough, Durable and ultra lightweight that make them ideal for use in harsh industrial environments. Multiple sized padlock sets available. Furthermore we can customize padlocks and Lockout Kits to suit your requirements.

[Read More](#)





CARDIAC CPR WALL CHART 29.7 X 42CM (A3)

SKU: CPRWC

CARDIAC CPR Wall Chart 29.7 x 42cm (A3)

[Read More](#)



HEARTSINE GREY PADS & BATTERY PACK - ADULT

SKU: PAD-PAK-03

Replacement HEARTSINE Grey Pads & Battery Pack - Adult

[Read More](#)





AED WALL MOUNTED CABINET

SKU: cc-25

This indoor metal wall cabinet comes with Perspex front and complete with wall brackets. With its ARC approved AED signage, this cabinet ensures that your defibrillator is highly visible, increasing staff awareness and minimising lost time in time of an emergency. This attractive cabinet will also protect your AED from dust and grime.

[Read More](#)



HEARTSINE FULLY AUTOMATIC DEFIBRILLATOR

SKU: DEFIB

The sophisticated HeartSine fully automatic defibrillator is specially designed for use in workshops, vehicles and in public areas. Inside is a lightweight and easy-to-operate system. The HeartSine samaritan is a fully automatic defibrillator designed to analyse heart rhythm and automatically deliver an electrical shock (if needed). Its advanced technology is balanced against the demands of real-world use.

[Read More](#)





OUT OF SERVICE TAGS 100 PACK WATERPROOF POLY

SKU: DLT5-100

Our High Quality waterproof Out of Service Tags are used for Lockout and Tagout of Equipment. They come in a convenient roll of 100. These lockout tags Are Waterproof, Tear resistant and feature individual Brass eyelets. This product is suited for indoors and short-term outdoor applications.

[Read More](#)



DO NOT OPERATE TAGS 100 PACK WATERPROOF POLY

SKU: DLT1-100

Our High Quality waterproof Do not Operate Tags are used for Lockout and Tagout of Equipment. They come in a convenient roll of 100. These lockout tags Are Waterproof, Tear resistant and feature individual Brass eyelets. This product is suited for indoors and short-term outdoor applications.

[Read More](#)





ARC FLASH KIT HRC4 ARCSAFE® X50

SKU: EASKCLHSX50

This Arc Flash Switching Kit is rated to 52 Cal/cm² and includes X50 standard Hood, X50 Coat and X50 Leggings. T40 Gloves, Safety Glasses and Gear Bag. This new light weight system is ideal for hot conditions and wicks moisture away from the body improving wearer comfort. The ergonomic design includes an action back, underarm gussets and articulated sleeves for greater range of movement and improved comfort levels.

[Read More](#)



BUM BAG CONTRACTORS LOCKOUT TAGOUT KIT

SKU: LOKB

When attending to lockout maintenance and repair work, ensure you are prepared with a EFO Bum Bag Contractors Lockout Tagout Kit. This Lockout Tagout Kit contains all the basic devices required to lock out common Circuit Breakers. EFO lockout Kits are the best value for money on the market and can also be customised to suit your exact requirements.

[Read More](#)





CUT-RESISTANT RIGGERS GLOVES

SKU: 6CH5SKG

Superior Endura goatskin Cut-Resistant Riggers Gloves are stronger and harder-wearing than other riggers gloves, and yet provide amazing feel and dexterity. With an ANSI puncture level 4 and cut level A4, these gloves are perfect when multiple hazards are present.

[Read More](#)



SUPERA ARC FLASH BALACLAVA 16 CAL/CM2

SKU: BAKVFR

The Supera Arc Flash Balaclava provides a 360 degree head and neck protection from Arc Flash dangers when used with the Cat 2 Arc Flash Face shields. Made from two layers of Kermel-viscose blend material. This hood is a NFPA 70E compliant to 16 Cal/cm2 and its inherent FR properties will not wash out. Kermel® is a very soft fiber that feels great next to the skin.

[Read More](#)





SUBSTATION AND SWITCHBOARD DRAPE 1200X600MM

SKU: SBD2

Our Substation and Switchboard Drape 1200x600mm is designed to help screen potentially live electrical environments during routine maintenance. Tested and stamped to comply with Australian Standard AS-4202. Furthermore customized sizes can be ordered upon request.

[Read More](#)



SPANSET POLE TOP HARNESS WITH BUTTOCK SEAT

SKU: 1600-ERGOIPLUS

The Australian made Spanset pole top harness is perfect for a variety of applications for electrical workers. Additionally it features a padded buttock seat for longer applications providing the ultimate in comfort. [ERGO iPlus](#) harnesses are our premium range of products and showcase some of our latest technology. Starting with the revolutionary, patented iWeb™, inspection-ready webbing which gives, for the first time, an objective inspection criteria for cuts and abrasion. Additionally, after many years of research we have arrived at our premium padding offer which, in the case of our ergonomically supportive waist belts, delivers on the ventilation performance so many have promised but failed to deliver. Comfortable enough to wear all day long these reliable harnesses are certified to AS/NZS 1891.1 and supported by a NATA accredited compliance and batch testing regime.

[Read More](#)





INFORMATION TAGS 10 PACK REUSABLE

SKU: INFOT

Our High Quality Plastic Information Tags are used for instruction information of Equipment. They are supplied in a pack of 10. These information tags are Waterproof and Reusable. Unlike Paper and Plastic coated tags our product is 100% Plastic and will outlast other information Tags. products. [Out of Service Tags](#) and [Do Not Operate Tags](#) are also available in the same high quality material and can be viewed in the Lockout Tagout section.

[Read More](#)



FIRST AID KIT WALL MOUNTED

SKU: IWM-29

The Industrial Workplace First Aid Kit Wall Mounted Plastic Cabinet suits medium to heavy industry situations. This first aid kit meets Workplace Health & Safety Standards, Australia wide. It also meets NSW A regulations. This kit will complement most high risk workplace environments.

[Read More](#)





1000V ELECTRICAL INSULATED MAT AS/NZS 61111:2020

SKU: MATLV

Recommended for protection of personnel where there is a possibility of contact with electrical equipment or conductors in domestic, commercial and industrial work areas. Our 1000V electrical insulated mat is manufactured of high quality dielectric elastomer rubber to provide complete protection against electrical shock due to earth faults. EFO switchboard matting complies with the Australian and New Zealand standard AS/NZS 61111:2020.

[Read More](#)



MINIATURE CIRCUIT BREAKER LOCKOUT SIEMENS

SKU: CBL6

This Miniature Circuit Breaker Lockout is designed to lockout Siemens miniature circuit breakers. It can be used on single and multi pole breakers. EFO can also customise Lockout Kits to suit your company's risk management requirements.

[Read More](#)





SLIDER TOGGLE LOCKOUT

SKU: CBLSTL

This versatile Slider Toggle Lockout prevents the accidental activation of large circuit breakers and can work on a wide variety of flip lever style handle switches. It is made of red dielectric ABS plastic consisting of 2 parts: Mounting base and slider bar. It installs quickly and easily with rivets or screws installed after drilling a hole in the panel body. The lockout has provision for a lockout padlock.

[Read More](#)



STAINLESS STEEL HASP 25MM

SKU: HASP-SS25

The EFO 304 Stainless steel hasp is easy to use and is acceptable at most isolation locking points. They are ideal for harsh industrial environments.

[Read More](#)





PLUG AND HOSE LOCKOUT

SKU: PLL

This Plug and hose lockout is made from high impact plastic and is suitable for lockout of large single phase industrial Plugs. Electrical Plug and Hose lockout devices are used for Lockout and Tagout when the plug is not under the exclusive control of the person performing service or maintenance. These lockout devices can also be used to lockout air hose nipples.

[Read More](#)



ARC FLASH HELMET BAG PADDED

SKU: AFH-BAG

Our Arc Flash Helmet Padded bag protects your face shield and helmet from potential damage when in storage. It suits a variety of face shields and helmets supplied by EFO ranging from 12 to 40 Cal/cm². Please contact one of the Sales team for further information.

[Read More](#)





TEMPORARY CABLE WIRE MANAGER

SKU: CABLE-WM

The Temporary Wire Manager is a very cost effective way to maintain job site safety. The Cable wire manager stows multiple cables and leads creating a clearer and cleaner workplace.

[Read More](#)



MINIATURE CIRCUIT BREAKER LOCKOUT

SKU: CBL4

This miniature circuit breaker lockout fro EFO is possibility the simplest, smallest and yet most versatile MCB lockouts available.

[Read More](#)



CARTRIDGE GRIP FUSE PULLER

SKU: FUSE-SGP

This cartridge grip fuse puller is a simple and safer way when replacing of removing cartridge-type fuses before implementing lockout procedures.

[Read More](#)



HALO REPLACEMENT BATTERY COVER

SKU: Halodoor

The Halo Replacement Battery Cover for use with the HaloSL Hardhat Task Light from Electrical Factory Outlet.

[Read More](#)



HALO LITHIUM RECHARGEABLE BATTERY

SKU: Halobat



The Halo Lithium Rechargeable Battery is designed for use with the HaloSL Hardhat Task Light from Electrical Factory Outlet.

[Read More](#)



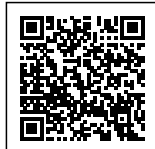
HONEYWELL FULL FACE RESPIRATOR KIT P3

SKU: RHSP-7600P3



The Honeywell 7600 Asbestos Silica Full Face Respirator Mask Kit is the quality choice for workers requiring protection when working around asbestos contaminated material, silica, dust and particulates (smoke). The kit comes complete with the 7600 series full face mask and P3 rated pancake filters plus 6 mask cleaning wipes. Pancake filters are flexible and lightweight and coupled with the 7600 mask; allow for longer wear times. Complete with a plastic lunchbox style, the container provides great storage for the mask, filters and wipes to keep them clean and to stop the filters being clogged up with dust when not in use.

[Read More](#)





HONEYWELL HALF MASK RESPIRATOR KIT

SKU: RHSP-7700P2

The 7700 Series Honeywell Half Mask Respirator is the most comfortable and durable half mask available. Its soft non allergenic silicone seal provides excellent protection, comfort and fit. The half mask cradle suspension system allows the face piece to seal evenly on the face without creating pressure points. Its low profile gives workers a wide field of vision. Featuring low inhalation and exhalation resistance the 7700 Series makes breathing easier to reduce worker fatigue. This Kit Contains the half face silicone mask, along with P3 filter sets for applications where users are working around asbestos or Silica contamination, or suspect traces in the working area.

[Read More](#)



HALOSL HARDHAT LIGHT WHITE

SKU: S100010

The Halo is a new Personal Active Safety System that securely attaches to any hard hat and produces a ring of light around the wearer enabling them to see and be seen in all 360° directions at all times. Employees feel safer wearing the Halo light, they see the work area better and have increased peripheral vision in the dark. The Halo mitigates night-time road or vehicle movement safety concerns.

[Read More](#)





ARC FLASH SWITCHING KIT 52 CAL/CM2

SKU: EASKCLHLX50

This Arc Flash Switching Kit is rated to 52 Cal/cm² and includes X50 Lift front Hood, X50 Coat and X50 Leggings. T40 Gloves, Safety Glasses and Gear Bag. This new light weight system is ideal for hot conditions and wicks moisture away from the body improving wearer comfort. The ergonomic design includes an action back, underarm gussets and articulated sleeves for greater range of movement and improved comfort levels.

[Read More](#)



ARC FLASH SWITCHING LEGGINGS 52 CAL/CM2

SKU: EASCLX50

The ArcSafe® X50 Arc Flash Switching Leggings are made from orange etek™ NXT™ and T-Gard® III Plus thermal liner with an ATPV 52 PPE4 (HRC4). This new lightweight system is ideal for hot conditions and wicks moisture away from the body improving wearer comfort.

[Read More](#)





ARC FLASH SWITCHING TROUSERS 52 CAL/CM2

SKU: EASCTX50

The ArcSafe® X50 Arc Flash Switching Trousers is made from orange etek™ NXT™ and T-Gard® III Plus thermal liner with an ATPV 52 PPE4 (HRC4). This new lightweight system is ideal for hot conditions and wicks moisture away from the body improving wearer comfort. The ergonomic design includes articulated knees for a greater range of movement and improved comfort levels. Bib and brace design with 50mm wide braces and side tab closures for a snug fit.

[Read More](#)



ARC FLASH SWITCHING COAT 52 CAL/CM2

SKU: EASCCX50

The ArcSafe® X50 Arc Flash Switching Coat is made from orange etek™ NXT™ and T-Gard® III Plus thermal liner with an ATPV 52 PPE4 (HRC4). This new light weight system is ideal for hot conditions and wicks moisture away from the body improving wearer comfort. The ergonomic design includes an action back, underarm gussets and articulated sleeves for greater range of movement and improved comfort levels.

[Read More](#)





ARC FLASH SWITCHING JACKET 52 CAL/CM2

SKU: EASCJX50

The ArcSafe® X50 Arc Switching Jacket is made from orange etek™ NXT™ and T-Gard® III Plus thermal liner with an ATPV 52 PPE4 (HRC4). This new light weight system is ideal for hot conditions and wicks moisture away from the body improving wearer comfort. The ergonomic design includes an action back, underarm gussets and articulated sleeves for greater range of movement and improved comfort levels.

[Read More](#)



ARC FLASH SWITCHING HOOD 52 CAL/CM2

SKU: EASCHX50

The ArcSafe® X50 Arc Flash Switching Hood incorporates our new highly transparent ArcSafe face shield. The hood provides the user with full colour recognition. This new fabric system is ideal for hot conditions and wicks moisture away from the body improving wearer comfort.

[Read More](#)





ARCSAFE X50 ARC FLASH LIFT FRONT SWITCHING HOOD

SKU: EASCHLFX50

The ArcSafe® X50 Arc Flash Lift Front Switching Hood incorporates our new highly transparent ArcSafe Lift Front face shield. The hood provides the user with unmatched air ventilation and an easy way to effectively communicate with other teammates while maintaining safety on the job site. Simply grip the latch assembly located at the front of the shield, and lift the window. To lower the shield, just pull it back down into position.

[Read More](#)



ELECTRICAL FIRST AID AND BURNS KIT

SKU: EWFAB

Our Electrical First Aid Burns Kit meets ISSC14 Type B requirements and also contains the additional items for electrical workers as set out in table 3.2. Outlined in NSW Occupational Health and Safety Regulation and also Work Cover NSW - First Aid in the Workplace. Guide Legislation requires first aid kits to be made available at all work areas taking into consideration: The type of work; The work environment; and The numbers of personnel.

[Read More](#)





1000V INSULATED GLOVE KIT

SKU: GLOVEKIT1000

The EFO 1000V Insulated Glove Kit provides effective individual protection for anyone required to work on live voltages and perform operations on or in proximity to electric installations.

[Read More](#)



500V INSULATED GLOVE KIT

SKU: GLOVEKIT500

The EFO 500V Insulated Glove Kit provides effective individual protection for anyone required to work on live voltages and perform operations on or in proximity to electric installations.

[Read More](#)





DECO GOATSKIN OVER GLOVES

SKU: EOVG

Deco Goatskin Over Gloves are used to provide mechanical protection from abrasion, cut, tear and also perforation. These gloves can be worn over [280mm Insulated Rubber Gloves](#) and 360mm insulated gloves. Sizes are available from 8 through to 12.

[Read More](#)



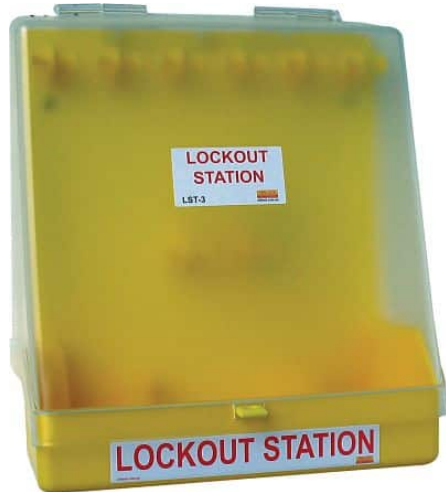
SNAKE BITE EMERGENCY KIT

SKU: SBKIT

The Snake bite emergency kit in a bum bag adjustable strap with clip comes with 'Snake Bite' identification on outside of kit and is for use in an emergency snake bite situation.

[Read More](#)





LOCKOUT TAGOUT STATION WITH LID

SKU: LST-LBASE

Our Lockout Tagout Station with lid is designed to hold up to 15 Lockout Tagout Padlocks. Furthermore additional compartments are proved for Tags and lockout Devices. All Lockout Stations can be Wall Mounted, but are also supplied with carry handle. The Cover lid is hinged at the top and is made from High Impact clear plastic. Additionally EFO Can customise your lockout Station with Lockout Tagout equipment to suit your requirements.

[Read More](#)



DECO 7500V INSULATED GLOVES

SKU: D17000-1

Deco 7500V Insulated Gloves provide effective individual protection for anyone required to work on live voltages or perform operations on or in proximity to electric installations. Each 7500V Class 1 Insulated glove is tested to IEC60903. International Standards to ensure maximum efficiency and safety. While other companies manufacture their dual colour gloves with a 50/50 layer. We produce an extremely thin outer layer. The slightest kink or cut in our gloves will expose the inside layer of latex, from a safety first aspect this is a huge plus.

[Read More](#)



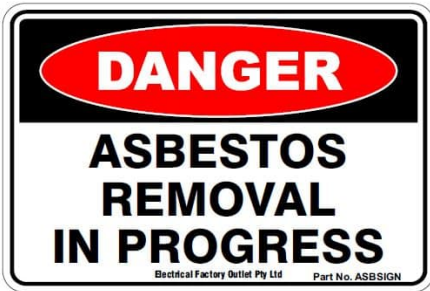


ARC FLASH KIT HRC2 9 CAL/CM2

SKU: HRC2KIT

The ARC Flash Kit HRC2 from EFO represents great value. It is coupled with high quality contents from the best manufacturers. This popular Kit is rated to HRC2 and comes complete with Salisbury Arc Flash Helmet, Arc Flash Balaclava, 1000V Insulated Glove kit, Arc Flash Overalls. Additionally this kit is supplied is a hi visibility industrial Carry bag to conveniently stow away and protect the items.

[Read More](#)



DANGER ASBESTOS REMOVAL SIGN 450MM X 300MM

SKU: ASBSIGN

The Danger Asbestos Removal sign is required by Level 2 Asps Contractors or Meter Installers when working around Asbestos. EFO also provides Asbestos Safety for minor works. Required by Electrical Workers and Tradespeople working around asbestos.

[Read More](#)





DECO 1000V INSULATED GLOVES

SKU: D1000

Deco 1000V insulated Gloves provide effective individual protection for anyone required to work on live voltages and perform operations on or in proximity to electric installations. Each Class 0 1000V Insulated glove is tested to AS/NZS IEC60903:2020 standard to ensure maximum efficiency and safety.

[Read More](#)



SUBSTATION AND SWITCHBOARD DRAPE 600X450MM

SKU: SBD1

Our Substation and Switchboard Drape 600x450mm is designed to help screen potentially live electrical environments during routine maintenance. Tested and stamped to comply with Australian Standard AS-4202. Furthermore customized sizes can be ordered upon request.

[Read More](#)





STREET LIGHT COLUMN KIT

SKU: SLCKIT

The Low voltage Street Light Column Kit is designed to help screen potentially live electrical environments during routine maintenance. Our kits have been specified by Electrical Utilities and conform to local and international standards. And provide an easy to use solution with all necessary components in one place, also stored in a bag.

[Read More](#)



DECO 17000V INSULATED GLOVES

SKU: D17000

Deco 17000V Insulated Gloves provide effective individual protection for anyone required to work on live voltages or perform operations on or in proximity to electric installations. Each 17000V Class 2 Insulated glove is also tested to IEC60903, International Standards to ensure maximum efficiency and safety. While other companies manufacture their dual colour gloves with a 50/50 layer. We produce an extremely thin outer layer. The slightest kink or cut in our gloves will expose the inside layer of latex. from a safety first aspect this is a huge plus.

[Read More](#)





DECO 26500V INSULATED GLOVES

SKU: D26500

Deco 26500V Insulated Gloves provide effective individual protection for anyone required to work on live voltages or perform operations on or in proximity to electric installations. Each 26500V Class 3 Insulated glove is also tested to IEC60903. International Standards to ensure maximum efficiency and safety. While other companies manufacture their dual colour gloves with a 50/50 layer. We produce an extremely thin outer layer. The slightest kink or cut in our gloves will expose the inside layer of latex. From a safety first aspect this is a huge plus.

[Read More](#)



ARC FLASH SWITCHING GLOVES 40 CAL/CM²

SKU: EASCGT40

The ArcSafe T40 Arc Flash Switching Gloves are inherently flame resistant, providing protection against electrical arc flash, and flash fire.

[Read More](#)





ARC FLASH SWITCHING GLOVES 9 CAL/CM2

SKU: EASCGT9

The ArcSafe T9 Arc Flash Switching Gloves are inherently flame resistant, providing protection against electrical arc flash, and flash fire.

[Read More](#)



NO TOOL LOCKOUT TAGOUT DEVICE

SKU: CBLNT

Lockout Devices can help prevent un-intended energisation of a electrical supply. The new generation CBLNT no tool lockout Tagout Device for miniature circuit breakers makes isolation safer and also faster.

[Read More](#)





DIELECTRIC LOCKOUT TAGOUT PADLOCK

SKU: DPBL-KD-R

Designed for use in all lockout applications, our Dielectric Lockout Tagout Padlock enhances safety. Featuring a premium grade Nylon shackle and non-conductive, spark resistant body. The nylon shackle also cuts off the electrical current from the shackle to the key. Furthermore we can customize padlocks and Lockout Kits to suit your requirements.

[Read More](#)



KEYED ALIKE LOCKOUT PADLOCKS

SKU: PBL410KA

EFO Keyed Alike Lockout Padlocks are designed specifically for use in Lockout/Tagout applications. These Padlocks are compact yet rugged and have a body that is tough, Durable and ultra lightweight that make them ideal for use in harsh industrial environments. Multiple sized padlock sets available. Furthermore we can customize padlocks and Lockout Kits to suit your requirements.

[Read More](#)





DECO 3300V INSULATED GLOVES

SKU: D3300

Deco 3300V insulated Gloves provide effective individual protection for anyone required to work on live voltages. Or perform operations on or in proximity to electric installations. Each 3300V Insulated glove is tested to AS2225. Australian Standard to ensure maximum efficiency and safety. While other companies manufacture their dual colour gloves with a 50/50 layer, we produce an extremely thin outer layer. The slightest kink or cut in our gloves will expose the inside layer of latex. From a safety first aspect this is a huge plus.

[Read More](#)



DECO 500V INSULATED GLOVES

SKU: D500

Deco 500V insulated Gloves importantly provide effective individual protection for anyone required to work on live voltages. Or perform operations on or in proximity to electric installations. Each Class 00 500V Insulated glove tested to AS/NZS IEC 60903:2020 Australian Standard that ensures maximum efficiency and safety.

[Read More](#)





ARC FLASH COVERALLS 9 CAL/CM2

SKU: TSCA700OR

EFO Supplies Tecasafe Plus fabric Arc Flash Coveralls that are inherently flame resistant and offer Electrical arc flash and flash fire protection. They are Extremely comfortable to wear, soft and breathable with excellent moisture management. Our Arc Flash Coveralls are abrasion resistant and maintains like new appearance after multiple industrial washes.

[Read More](#)



ASBESTOS REMOVAL KIT MINOR WORKS

SKU: HAZKIT

The EFO Asbestos Removal Kit provides a basic level of protection for Electrical workers and Tradespeople conducting minor works. Whether they are aware of it or not, tradespeople (particularly electricians, plumbers, air con technicians, carpenters, tilers and roofers). Come into contact with materials containing asbestos (ACM's) daily. Whilst not technically removing asbestos. Tradespeople may be required to cut, drill or penetrate ACM's to run pipes, cables or install circuit breakers etc.

[Read More](#)





HV ELECTRICAL INSULATING MAT AS/NSZ IEC61111:2020 CLASS 0-4

SKU: MATHV

Recommended for protection of personnel where there is a possibility of contact with electrical equipment or conductors in domestic, commercial and industrial work areas. Our HV electrical insulating mat is manufactured of high quality dielectric elastomer rubber to provide complete protection against electrical shock due to earth faults. EFO insulated matting is manufactured to AS/NSZ IEC61111:2020 and IEC61111:2009. We Can supply Electrical Insulated Mats from Class 0: 1000V Class 1: 7.5KV, Class 2: 17KV, Class 3: 26.5KV and Class 4: 36KV. All our HV Insulated Mats come marked with the compliance, voltage and also class. 10M Rolls of insulated matting are also available upon enquiry.

[Read More](#)



GROUP LOCKOUT TAGOUT BOX

SKU: GLBOX

Group Lock boxes require fewer locks and are lighter than hasps on delicate energy isolating devices like circuit breakers. This Group Lockout Tagout Box from EFO allows keys to be inserted when box is locked. Transparent poly carbonate windows let you view contents from the outside. Pre-drilled holes in back allow for easy wall-mounting. It comes with hooks for hanging keys, locks, etc. inside the box.

[Read More](#)



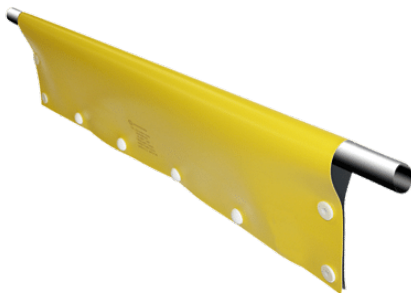


SALISBURY ARC FLASH FACE SHIELD 12 CAL/CM²

SKU: AS1200HAT-PP

The new Premium Salisbury Arc Flash Face shield is a Weight Balancing Arc Flash Face Shield and Helmet. It stows in a balanced compact position, centred over the top of the hard hat when not required. The Face shield has an ATPV rating of 12 cal/cm². Nanotechnology provides a more transparent window for improved visibility. The Salisbury Arc Flash Face Shield unit includes air vents below the chin that allow a natural convection air flow through the face shield. As a result this reduces fogging of the visor, lowers CO₂ levels and improves comfort for the user.

[Read More](#)



INSULATED LINESMAN'S COVER

SKU: LVLC

Our Insulated Linesman's Cover is utilised by Utilities and Electrical Contractors. They provide a temporary electrical insulation barrier during maintenance of power lines. Conductors, cabling, catenary wires, fuses, cross-arms, pins and links.

[Read More](#)





PLUG AND HOSE LOCKOUT

SKU: PLS

Electrical Plug and Hose lockout devices are used for Lockout and Tagout when the plug is not under the exclusive control of the person performing service or maintenance. These lockout devices can also be used to lockout air hose nipples. The PLS Plug and hose lockout is made from high impact plastic and is suitable for lockout of most 240V Plugs.

[Read More](#)



ROLL UP BAG FOR INSULATED MATS

SKU: MATBAG

The Convenient EFO Roll up Carry Bag for Insulated Mats. Not only does it protect the Insulated Switchboard Matting but also can be used as a ground sheet. Insulated Mats can quickly be rolled into the bag as well as reducing the storage space required. Furthermore the bag come with a strong carry strap.

[Read More](#)





OUT OF SERVICE TAGS 10 PACK REUSABLE

SKU: DLT5

Our High Quality Plastic Reusable Out of Service Tags tags are used for Lockout and Tagout of Equipment. They come in a pack of 10. These lockout tags Are Waterproof and Reusable. Unlike Paper and Plastic coated Lockout Tags our product is 100% Plastic and will outlast other Lockout Tagout products. Do Not Operate Tags are also available in the same high quality material and can be viewed in the Lockout Tagout section.

[Read More](#)



ERGO HARNESS WITH WAIST BELT

SKU: 1300ERGO-0

The ERGO Full body fall arrest harness with front fall arrest D and rear fall arrest D with waist belt is perfect low cost harness for roof, ladder systems, EWP maintenance and construction, ladder, tower and pole work.

[Read More](#)





CUSTOM LOCKOUT TAGOUT KITS

SKU: Lockout Tagout Kits

[Read More](#)



ARC FLASH FACE SHIELD AND HELMET 20 CAL/CM2

SKU: MO-180-ARC

The Catu Arc Flash Face Shield and Helmet is the only all in one integrated Arc flash Face Shield and helmet on the market. The helmet with Face Shield weighs 1.2 kg in total. This Industrial helmet has shock protection, Insulating protection and Arc Flash protection up to 20 cal/cm² with the neck guard.

[Read More](#)



EFO INSULATED GLOVE KIT AVAILABLE IN ALL VOLTAGES

SKU: GLOVEKIT

EFO Insulated Glove Kit provides effective individual protection for anyone required to work on live voltages and perform operations on or in proximity to electric installations. Available from Class 00 to Class 4.

[Read More](#)



EFO CANVAS GLOVE BAG WITH HANGING CLIP

SKU: GLOVEBAG

The EFO Canvas Glove bag is made from high quality Canvas. Designed for storage of insulated Gloves. Furthermore is features a hang clip on the back.

[Read More](#)





DO NOT OPERATE TAGS 10 PACK REUSABLE

SKU: DLT1

Our High Quality Plastic Reusable Do not Operate Tags are used for Lockout and Tagout of Equipment. They come in a pack of 10. These lockout tags Are Waterproof and Reusable. Unlike Paper and Plastic coated Lockout Tags our product is 100% Plastic and will outlast other Lockout Tagout products. Out of Service Tags are also available in the same high quality material and can be viewed in the Lockout Tagout section.

[Read More](#)



CABLE LOCKOUT DEVICE WITH 1M CABLE

SKU: MPCL

Our Multi Function Cable Lockout Device has many applications. Lockout Gate Valves. Multiple electrical points and also multiple Circuit Breaker lockouts. Or anywhere regular Lockout Hasps won't fit.

[Read More](#)





PLASTIC BODY LOCKOUT PADLOCK

SKU: PBL410

Designed for use in all lockout Tagout applications. Our Plastic Body Lockout Padlock features a key retaining design to ensure the padlock is not left unlocked. Additionally the locks have permanent write-on labels for individual markings. Furthermore EFO can customise padlocks and Lockout Kits to suit your company risk management requirements.

[Read More](#)



ELECTRICAL INSULATED MAT AS/NZS 2978

SKU: MAT2978

The AS/NZS 2978 standard has been superseded by AS/NZS IEC6111:2020. Please refer to our part numbers [MATLV](#) or MATHV for all insulated matting products. Tagged to 1000V our low voltage insulated matting can be supplied in a lightweight 3mm thick mat ([MATLV](#)) or a heavier 5mm thick mat (MATHV) depending on your application. EFO switchboard matting is manufactured using high quality elastomer rubber to provide complete protection against electrical shock due to earth faults.

[Read More](#)





LV WALL MOUNTED RESCUE AND OPERATORS KIT

SKU: LVsBRKITWM

The EFO LV Wall Mounted Rescue and Operators Kit is designed to be used by a safety observer for the safe rescue of victims of electrical shock and other injuries when working on Low Voltage switchboards and substations. The kit is designed to comply with Australian Standard AS4836 requirements Safe Working On Low Voltage Electrical Installations. Additional PPE and safety equipment is also provided for the operator to use. Which in the standard configuration consists of an Insulating Mat and Salisbury Arc Flash Face Shield.

[Read More](#)



HV WALL MOUNTED RESCUE AND OPERATORS KIT

SKU: HVsBRKITWM

The EFO HV Wall Mounted Rescue and Operators Kit is designed to be used by a safety observer. For the safe rescue of victims of electrical shock and other injuries when working on High Voltage switchboards and substations. Additional PPE and safety equipment is also provided for the operator to use. Which in the standard configuration consists of an Insulating Mat and Catu Arc Flash Face Shield. Additionally items can be added pending the sites risk assessment.

[Read More](#)





CONTRACTORS LOCKOUT TAGOUT KIT

SKU: LOK

When attending to lockout maintenance and repair work, ensure you are prepared with a EFO Contractors Lockout Tagout Kit. This Lockout Tagout Kit contains all the basic devices required to lock out common Circuit Breakers. EFO lockout Kits are the best value for money on the market and can also be customised to suit your exact requirements.

[Read More](#)



LOCKOUT DEVICE MINIATURE CB PIN OUT TYPE

SKU: CBLPO

[Read More](#)





LOCKOUT DEVICE MINIATURE CB PIN IN TYPE

SKU: CBLPI

[Read More](#)



LARGE CB LOCKOUT DEVICE

SKU: CBL5

[Read More](#)





MOULDED CASE CB LOCKOUT DEVICE

SKU: CBL2

The EFO CBL2 Molded Case CB Lockout Tagout Device fits most common types of moulded case CB. Lockout Devices can help prevent unintended energisation of a electrical supply.

[Read More](#)



MINIATURE CB LOCKOUT DEVICE

SKU: CBL1

[Read More](#)



HIGH VOLTAGE RESCUE CROOK

SKU: CS-45



The Catu Rescue hook is designed for rescuing those who are being subjected to electrical shock without having to directly touch the person being shocked. The High Voltage Rescue Crook is a 45 kV rescue stick that measures 1.65m long. Constructed from white resin polyester and fibreglass foam filled tube. It also comes complete with wall mounted supports.

[Read More](#)



HV SWITCHBOARD RESCUE KIT

SKU: HVSBRKIT

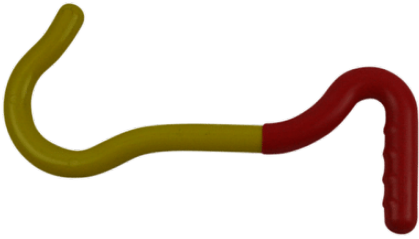
The HV Switchboard Rescue Kit is designed to be used by a safety observer. For the safe rescue of victims of electrical shock and other injuries when working on High Voltage switchboards and substations. The EFO Rescue kits offer the highest specification on the Market. Standard features include a High voltage Catu 45Kv rescue crook. 17KV Class 2 Insulated Rescue Gloves. Double Insulated low voltage fibreglass Rescue Crook and a Glow in the dark strip on the bag for identification in poorly lit rooms. We also we include a CPR mask and thermal shock blanket as standard.

[Read More](#)



LOW VOLTAGE RESCUE CROOK

SKU: RCBM



The EFO Low Voltage Rescue Crook is used for Low voltage rescue applications. Uniquely our Rescue crook is the only one on the market with fibreglass construction and a double insulated handle. This only does not provide extra insulation. As well as identifying the correct end. Additionally the Crook has been Type tested to 10Kv. Also load testing of greater than 250Kg has been achieved.

[Read More](#)



COTTON KNITTED GLOVE LINERS

SKU: KCGL

[Read More](#)





FIRST AID KIT MODULATOR WORKPLACE STANDARD

SKU: AFAKMODS4

A compact & versatile first aid kit containing injury specific modules to suit all your needs and requirements. Just one stop to treat any common injury.

[Read More](#)



AIRCORE TOWER WORKER HARNESS

SKU: M1020225

The Miller® AirCore Tower Worker Harness is a light-weight full-body harness. Its specifically designed breathable, open-core padding technology provides optimal air flow, reduces heat and moisture entrapment and keeps the worker drier and cooler.

[Read More](#)





LANYARD WITH SHOCK ABSORBER 1.2M

SKU: L11WEC1.2

Miller Lanyard with shock absorber are used in various fall arrest situations and are designed to limit the force of a sustained fall to under 6kN.

[Read More](#)



LINESMAN'S POLE STRAP 2.4M

SKU: 138.1

The Miller® electrical workers Linesman's Pole Strap 2.4m from EFO is fully adjustable Allowing for various work positioning applications.

[Read More](#)





SALISBURY LEATHER OVER GLOVES

SKU: ILPG3S

Salisbury Leather Over Gloves are used to provide mechanical protection from abrasion, cut, tear and also perforation. Over gloves should always be worn over Insulated Rubber Gloves to provide the needed mechanical protection. Salisbury ILPG series have a High visibility Orange Cuff. Furthermore these leather Protectors meet ASTM F696 standards and are available in sizes 8-12.

[Read More](#)



LV SWITCHBOARD RESCUE KIT

SKU: LVSBRKIT

The LV Switchboard Rescue Kit is designed to be used by a safety observer for the safe rescue of victims of electrical shock and other injuries when working on Low Voltage switchboards and substations. The kit is designed to comply with Australian Standard AS4836 requirements Safe Working On Low Voltage Electrical Installations.

[Read More](#)



INSULATED GLOVES

EFO is a distributor of High Quality Electrical Insulated Gloves to the Electrical Industry.

Importantly we only supply the leading brands. Our insulated gloves are perfectly designed for all hand sizes. They are soft, flexible, strong and they also allow great dexterity. Our range of Insulated Gloves are available in Class 00-500V, Class 0-1000V, Class 1-7500V, Class 2-17000V, Class 3-26500V, Class 4- 36000V. Our Insulated Gloves are also compliant and tested to AS/NZS IEC60903 and EN60903 standards. In addition we supply leather Over Gloves, Arc Rated Over gloves, Glove Bags and Cotton Glove Liners.



DECO INDUSTRIAL HV LEATHER OUTERS

SKU: EOHVC

Deco HV leather over gloves are specifically designed for the use with high voltage insulating gloves. They are sized larger to allow easy fit over thicker HV Insulated gloves. Sizes are available from 8 through to 11.

[Read More](#)





INSULATED GLOVE INFLATOR TESTER

SKU: GLOVEIN

The EFO Insulated Glove Inflator Tester is a portable device that conducts a air test on Insulated gloves and assists users during visual inspection to search for any abrasion, cuts, tears or punctures. Our Glove inflator can be used anywhere and comes with a durable storage bag made out of canvas and a strap to hold the rubber insulating glove in place.

[Read More](#)



DIELECTRIC SAFETY BOOTS 20KV

SKU: DSBOOT

These Dielectric Safety Boots 20KV supplied by EFO are of the Highest specification, fully waterproof and hand-built. Manufactured with specially formulated insulating layers offering electrical protection over the whole boot.

[Read More](#)





CUT-RESISTANT RIGGERS GLOVES

SKU: 6CH5SKG

Superior Endura goatskin Cut-Resistant Riggers Gloves are stronger and harder-wearing than other riggers gloves, and yet provide amazing feel and dexterity. With an ANSI puncture level 4 and cut level A4, these gloves are perfect when multiple hazards are present.

[Read More](#)



1000V INSULATED GLOVE KIT

SKU: GLOVEKIT1000

The EFO 1000V Insulated Glove Kit provides effective individual protection for anyone required to work on live voltages and perform operations on or in proximity to electric installations.

[Read More](#)





500V INSULATED GLOVE KIT

SKU: GLOVEKIT500

The EFO 500V Insulated Glove Kit provides effective individual protection for anyone required to work on live voltages and perform operations on or in proximity to electric installations.

[Read More](#)



DECO GOATSKIN OVER GLOVES

SKU: EOVG

Deco Goatskin Over Gloves are used to provide mechanical protection from abrasion, cut, tear and also perforation. These gloves can be worn over [280mm Insulated Rubber Gloves](#) and 360mm insulated gloves. Sizes are available from 8 through to 12.

[Read More](#)





DECO 7500V INSULATED GLOVES

SKU: D17000-1

Deco 7500V Insulated Gloves provide effective individual protection for anyone required to work on live voltages or perform operations on or in proximity to electric installations. Each 7500V Class 1 Insulated glove is tested to IEC60903. International Standards to ensure maximum efficiency and safety. While other companies manufacture their dual colour gloves with a 50/50 layer. We produce an extremely thin outer layer. The slightest kink or cut in our gloves will expose the inside layer of latex, from a safety first aspect this is a huge plus.

[Read More](#)



DECO 1000V INSULATED GLOVES

SKU: D1000

Deco 1000V insulated Gloves provide effective individual protection for anyone required to work on live voltages and perform operations on or in proximity to electric installations. Each Class 0 1000V Insulated glove is tested to AS/NZS IEC60903:2020 standard to ensure maximum efficiency and safety.

[Read More](#)





DECO 26500V INSULATED GLOVES

SKU: D26500

Deco 26500V Insulated Gloves provide effective individual protection for anyone required to work on live voltages or perform operations on or in proximity to electric installations. Each 26500V Class 3 Insulated glove is also tested to IEC60903. International Standards to ensure maximum efficiency and safety. While other companies manufacture their dual colour gloves with a 50/50 layer. We produce an extremely thin outer layer. The slightest kink or cut in our gloves will expose the inside layer of latex. From a safety first aspect this is a huge plus.

[Read More](#)



DECO 17000V INSULATED GLOVES

SKU: D17000

Deco 17000V Insulated Gloves provide effective individual protection for anyone required to work on live voltages or perform operations on or in proximity to electric installations. Each 17000V Class 2 Insulated glove is also tested to IEC60903. International Standards to ensure maximum efficiency and safety. While other companies manufacture their dual colour gloves with a 50/50 layer. We produce an extremely thin outer layer. The slightest kink or cut in our gloves will expose the inside layer of latex. from a safety first aspect this is a huge plus.

[Read More](#)





DECO 3300V INSULATED GLOVES

SKU: D3300

Deco 3300V insulated Gloves provide effective individual protection for anyone required to work on live voltages. Or perform operations on or in proximity to electric installations. Each 3300V Insulated glove is tested to AS2225. Australian Standard to ensure maximum efficiency and safety. While other companies manufacture their dual colour gloves with a 50/50 layer, we produce an extremely thin outer layer. The slightest kink or cut in our gloves will expose the inside layer of latex. From a safety first aspect this is a huge plus.

[Read More](#)



DECO 500V INSULATED GLOVES

SKU: D500

Deco 500V insulated Gloves importantly provide effective individual protection for anyone required to work on live voltages. Or perform operations on or in proximity to electric installations. Each Class 00 500V Insulated glove tested to AS/NZS IEC 60903:2020 Australian Standard that ensures maximum efficiency and safety.

[Read More](#)



EFO INSULATED GLOVE KIT AVAILABLE IN ALL VOLTAGES

SKU: GLOVEKIT

EFO Insulated Glove Kit provides effective individual protection for anyone required to work on live voltages and perform operations on or in proximity to electric installations. Available from Class 00 to Class 4.

[Read More](#)



EFO CANVAS GLOVE BAG WITH HANGING CLIP

SKU: GLOVEBAG

The EFO Canvas Glove bag is made from high quality Canvas. Designed for storage of insulated Gloves. Furthermore is features a hang clip on the back.

[Read More](#)



COTTON KNITTED GLOVE LINERS

SKU: KCGL

[Read More](#)



SALISBURY LEATHER OVER GLOVES

SKU: ILPG3S

Salisbury Leather Over Gloves are used to provide mechanical protection from abrasion, cut, tear and also perforation. Over gloves should always be worn over Insulated Rubber Gloves to provide the needed mechanical protection. Salisbury ILPG series have a High visibility Orange Cuff. Furthermore these leather Protectors meet ASTM F696 standards and are available in sizes 8-12.

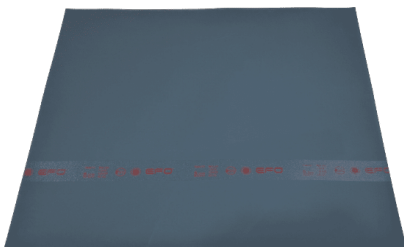
[Read More](#)



ELECTRICAL INSULATED MATS

In Brief Insulated Switchboard Matting is generally placed in front of electrical panels, switch gears & High Voltage equipment's in order to create a safe working environment for the operators/users. Where there is a possibility of contact with electrical equipment or conductors. Insulated Mats coupled with personal PPE provide addition protection.

Our Electrical Insulated Mats are manufactured of High quality dielectric elastomer rubber with x-cross technology non-slip surface. EFO Insulating Matting is Manufactured to comply with the Australian and New Zealand standard AS/NZS 61111:2020. Furthermore we can supply HV Insulated switchboard matting and 10M rolls manufactured IEC 61111:2009. Class 0 1000V, Class 1 7.5KV, Class 2 17KV, Class 3 26.5KV and Class 4 36KV. All our Electrical Insulated Mats also come marked with the compliance, voltage and class.



1000V ELECTRICAL INSULATED MAT AS/NZS 61111:2020

SKU: MATLV

Recommended for protection of personnel where there is a possibility of contact with electrical equipment or conductors in domestic, commercial and industrial work areas. Our 1000V electrical insulated mat is manufactured of high quality dielectric elastomer rubber to provide complete protection against electrical shock due to earth faults. EFO switchboard matting complies with the Australian and New Zealand standard AS/NZS 61111:2020.

[Read More](#)





HV ELECTRICAL INSULATING MAT AS/NSZ IEC61111:2020 CLASS 0-4

SKU: MATHV

Recommended for protection of personnel where there is a possibility of contact with electrical equipment or conductors in domestic, commercial and industrial work areas. Our HV electrical insulating mat is manufactured of high quality dielectric elastomer rubber to provide complete protection against electrical shock due to earth faults. EFO insulated matting is manufactured to AS/NSZ IEC61111:2020 and IEC61111:2009. We Can supply Electrical Insulated Mats from Class 0: 1000V Class 1: 7.5KV, Class 2: 17KV, Class 3: 26.5KV and Class 4: 36KV. All our HV Insulated Mats come marked with the compliance, voltage and also class. 10M Rolls of insulated matting are also available upon enquiry.

[Read More](#)



ROLL UP BAG FOR INSULATED MATS

SKU: MATBAG

The Convenient EFO Roll up Carry Bag for Insulated Mats. Not only does it protect the Insulated Switchboard Matting but also can be used as a ground sheet. Insulated Mats can quickly be rolled into the bag as well as reducing the storage space required. Furthermore the bag come with a strong carry strap.

[Read More](#)





ELECTRICAL INSULATED MAT AS/NZS 2978

SKU: MAT2978

The AS/NZS 2978 standard has been superseded by AS/NZS IEC6111:2020. Please refer to our part numbers [MATLV](#) or MATHV for all insulated matting products. Tagged to 1000V our low voltage insulated matting can be supplied in a lightweight 3mm thick mat ([MATLV](#)) or a heavier 5mm thick mat (MATHV) depending on your application. EFO switchboard matting is manufactured using high quality elastomer rubber to provide complete protection against electrical shock due to earth faults.

[Read More](#)



SWITCHBOARD RESCUE KITS

In case of an Electrical Accident. Quick response is essential. Seconds gained or lost can decide the life or death of a victim.

Our LV Switchboard Rescue Kits and HV Switchboard Rescue Kits are designed to make all necessary materials immediately available to rescue personnel. EFO Rescue Kits are available in both Portable and also Wall Mounted Versions. Our Wall mounted Rescue and Operator Kits also provide Essential PPE for the Operator. All our Rescue and Operator Kits can be customised to meet your company or sites risk assessment. EFO Products Offer the highest specification on the Market and contain only High Quality contents.



TEMPORARY CABLE WIRE MANAGER

SKU: CABLE-WM

The Temporary Wire Manager is a very cost effective way to maintain job site safety. The Cable wire manager stows multiple cables and leads creating a clearer and cleaner workplace.

[Read More](#)





LV WALL MOUNTED RESCUE AND OPERATORS KIT

SKU: LVsBRKITWM

The EFO LV Wall Mounted Rescue and Operators Kit is designed to be used by a safety observer for the safe rescue of victims of electrical shock and other injuries when working on Low Voltage switchboards and substations. The kit is designed to comply with Australian Standard AS4836 requirements Safe Working On Low Voltage Electrical Installations. Additional PPE and safety equipment is also provided for the operator to use. Which in the standard configuration consists of an Insulating Mat and Salisbury Arc Flash Face Shield.

[Read More](#)



HV WALL MOUNTED RESCUE AND OPERATORS KIT

SKU: HVsBRKITWM

The EFO HV Wall Mounted Rescue and Operators Kit is designed to be used by a safety observer. For the safe rescue of victims of electrical shock and other injuries when working on High Voltage switchboards and substations. Additional PPE and safety equipment is also provided for the operator to use. Which in the standard configuration consists of an Insulating Mat and Catu Arc Flash Face Shield. Additionally items can be added pending the sites risk assessment.

[Read More](#)



HIGH VOLTAGE RESCUE CROOK

SKU: CS-45



The Catu Rescue hook is designed for rescuing those who are being subjected to electrical shock without having to directly touch the person being shocked. The High Voltage Rescue Crook is a 45 kV rescue stick that measures 1.65m long. Constructed from white resin polyester and fibreglass foam filled tube. It also comes complete with wall mounted supports.

[Read More](#)



HV SWITCHBOARD RESCUE KIT

SKU: HVSBRKIT

The HV Switchboard Rescue Kit is designed to be used by a safety observer. For the safe rescue of victims of electrical shock and other injuries when working on High Voltage switchboards and substations. The EFO Rescue kits offer the highest specification on the Market. Standard features include a High voltage Catu 45Kv rescue crook. 17KV Class 2 Insulated Rescue Gloves. Double Insulated low voltage fibreglass Rescue Crook and a Glow in the dark strip on the bag for identification in poorly lit rooms. We also we include a CPR mask and thermal shock blanket as standard.

[Read More](#)

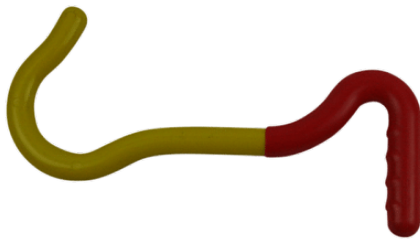


LOW VOLTAGE RESCUE CROOK

SKU: RCBM

The EFO Low Voltage Rescue Crook is used for Low voltage rescue applications. Uniquely our Rescue crook is the only one on the market with fibreglass construction and a double insulated handle. This only does not provide extra insulation. As well as identifying the correct end. Additionally the Crook has been Type tested to 10Kv. Also load testing of greater than 250Kg has been achieved.

[Read More](#)



LV SWITCHBOARD RESCUE KIT

SKU: LVSBKIT

The LV Switchboard Rescue Kit is designed to be used by a safety observer for the safe rescue of victims of electrical shock and other injuries when working on Low Voltage switchboards and substations. The kit is designed to comply with Australian Standard AS4836 requirements Safe Working On Low Voltage Electrical Installations.

[Read More](#)



HALOSL SAFETY HARDHAT LIGHT

The New Illumagear HaloSL Hardhat Light is a new Personal Active Safety System that securely attaches to any hard hat and produces a ring of light around the wearer enabling them to see and be seen in all 360° directions at all times. The HaloSL Safety hardhat light also has the option of coloured LEDs at the rear for added safety. A Spot and Task Light with multiple power modes is incorporated on the front. Employees feel safer wearing the Halo light, they see the work area better and have increased peripheral vision in the dark. The Halo mitigates night-time road or vehicle movement safety concerns.



HALO REPLACEMENT BATTERY COVER

SKU: Halodoor

The Halo Replacement Battery Cover for use with the HaloSL Hardhat Task Light from Electrical Factory Outlet.

[Read More](#)



HALO LITHIUM RECHARGEABLE BATTERY

SKU: Halobat



The Halo Lithium Rechargeable Battery is designed for use with the HaloSL Hardhat Task Light from Electrical Factory Outlet.

[Read More](#)



HALOSL HARDHAT LIGHT WHITE

SKU: S100010

The Halo is a new Personal Active Safety System that securely attaches to any hard hat and produces a ring of light around the wearer enabling them to see and be seen in all 360° directions at all times. Employees feel safer wearing the Halo light, they see the work area better and have increased peripheral vision in the dark. The Halo mitigates night-time road or vehicle movement safety concerns.

[Read More](#)



ARC FLASH FACE SHIELDS

Arc flash face shields provide protection that is critically important in keeping workers safe. There are many methods of protecting personnel from arc flash hazards. This can include personnel wearing arc flash personal protective equipment (PPE) such as arc flash face shields. The best way to remove the hazards of an arc flash is to de-energize electrical equipment when interacting with it, however de-energizing electrical equipment is in and of itself an arc flash hazard. EFO Also supplies a full range of Arc Flash Clothing. Please contact the expert team at EFO for any assistance in selection of Arc Flash protective clothing and Electrical PPE.



SUPERA ARC FLASH BALACLAVA 16 CAL/CM2

SKU: BAKVFR

The Supera Arc Flash Balaclava provides a 360 degree head and neck protection from Arc Flash dangers when used with the Cat 2 Arc Flash Face shields. Made from two layers of Kermel-viscose blend material. This hood is a NFPA 70E compliant to 16 Cal/cm2 and its inherent FR properties will not wash out. Kermel® is a very soft fiber that feels great next to the skin.

[Read More](#)





ARC FLASH HELMET BAG PADDED

SKU: AFH-BAG

Our Arc Flash Helmet Padded bag protects your face shield and helmet from potential damage when in storage. It suits a variety of face shields and helmets supplied by EFO ranging from 12 to 40 Cal/cm². Please contact one of the Sales team for further information.

[Read More](#)



ARC FLASH SWITCHING HOOD 52 CAL/CM²

SKU: EASCHX50

The ArcSafe® X50 Arc Flash Switching Hood incorporates our new highly transparent ArcSafe face shield. The hood provides the user with full colour recognition. This new fabric system is ideal for hot conditions and wicks moisture away from the body improving wearer comfort.

[Read More](#)





ARCSAFE X50 ARC FLASH LIFT FRONT SWITCHING HOOD

SKU: EASCHLFX50

The ArcSafe® X50 Arc Flash Lift Front Switching Hood incorporates our new highly transparent ArcSafe Lift Front face shield. The hood provides the user with unmatched air ventilation and an easy way to effectively communicate with other teammates while maintaining safety on the job site. Simply grip the latch assembly located at the front of the shield, and lift the window. To lower the shield, just pull it back down into position.

[Read More](#)



SALISBURY ARC FLASH FACE SHIELD 12 CAL/CM2

SKU: AS1200HAT-PP

The new Premium Salisbury Arc Flash Face shield is a Weight Balancing Arc Flash Face Shield and Helmet. It stows in a balanced compact position, centred over the top of the hard hat when not required. The Face shield has an ATPV rating of 12 cal/cm². Nanotechnology provides a more transparent window for improved visibility. The Salisbury Arc Flash Face Shield unit includes air vents below the chin that allow a natural convection air flow through the face shield. As a result this reduces fogging of the visor, lowers CO₂ levels and improves comfort for the user.

[Read More](#)





ARC FLASH FACE SHIELD AND HELMET 20 CAL/CM2

SKU: MO-180-ARC

The Catu Arc Flash Face Shield and Helmet is the only all in one integrated Arc flash Face Shield and helmet on the market. The helmet with Face Shield weighs 1.2 kg in total. This Industrial helmet has shock protection, Insulating protection and Arc Flash protection up to 20 cal/cm² with the neck guard.

[Read More](#)



ARC FLASH KITS

EFO distributes a range of quality Arc Flash Kits for Electrical workers Arc Flash protection. Our Arc Flash Switching kits cover HRC2, HRC3 and HRC4 Requirements. Our Arc Flash Kits are sourced from leading brands including Arcsafe, Salisbury and Guardian.



ARC FLASH KIT HRC4 ARCSAFE® X50

SKU: EASKCLHSX50

This Arc Flash Switching Kit is rated to 52 Cal/cm² and includes X50 standard Hood, X50 Coat and X50 Leggings. T40 Gloves, Safety Glasses and Gear Bag. This new light weight system is ideal for hot conditions and wicks moisture away from the body improving wearer comfort. The ergonomic design includes an action back, underarm gussets and articulated sleeves for greater range of movement and improved comfort levels.

[Read More](#)





ARC FLASH SWITCHING KIT 52 CAL/CM2

SKU: EASKCLHLX50

This Arc Flash Switching Kit is rated to 52 Cal/cm² and includes X50 Lift front Hood, X50 Coat and X50 Leggings. T40 Gloves, Safety Glasses and Gear Bag. This new light weight system is ideal for hot conditions and wicks moisture away from the body improving wearer comfort. The ergonomic design includes an action back, underarm gussets and articulated sleeves for greater range of movement and improved comfort levels.

[Read More](#)



ARC FLASH KIT HRC2 9 CAL/CM2

SKU: HRC2KIT

The Arc Flash Kit HRC2 from EFO represents great value. It is coupled with high quality contents from the best manufacturers. This popular Kit is rated to HRC2 and comes complete with Salisbury Arc Flash Helmet, Arc Flash Balaclava, 1000V Insulated Glove kit, Arc Flash Overalls. Additionally this kit is supplied is a hi visibility industrial Carry bag to conveniently stow away and protect the items.

[Read More](#)



ARC FLASH CLOTHING

EFO distributes a range of quality Arc Flash Clothing for Electrical workers Arc Flash protection. Our products include Arc Flash Switching Suits. Switching Jackets. Switching Coats. Coveralls. Hoods. Balaclavas. Arc Flash Shirts. Cargo trousers. Insulated Gloves. Helmets and face shields. All our clothing is high Visibility and can be fitted with a reflective trim. Offering protection from 6.5 cal/cm² PPE1 (HRC1) to 52 cal/cm² PPE4 (HRC4). An arc flash is a dangerous release of energy produced by an electrical fault in the air from one phase to another phase, or from one phase to the ground. The elements released during an arc flash event are: intense light, sound, pressure, and extremely high temperatures. Please contact the expert team at EFO for any assistance in selection of Arc Flash protective clothing and Electrical PPE.



ARC FLASH SWITCHING JACKET 9 CAL/CM² 870MM

SKU: EASCJT9

The ArcSafe® 9 cal/cm² HRC2 ArcFlash Switching Jacket are inherently flame resistant, providing protection against electrical arc flashes and flash fires.

[Read More](#)





ARC FLASH SWITCHING COAT 9 CAL/CM2 1300MM

SKU: EASCCT9

The ArcSafe® 9 cal/cm² HRC2 ArcFlash Switching Coat are inherently flame resistant, providing protection against electrical arc flashes and flash fires.

[Read More](#)



DIELECTRIC SAFETY BOOTS 20KV

SKU: DSBOOT

These Dielectric Safety Boots 20KV supplied by EFO are of the Highest specification, fully waterproof and hand-built. Manufactured with specially formulated insulating layers offering electrical protection over the whole boot.

[Read More](#)





SUPERA ARC FLASH BALACLAVA 16 CAL/CM2

SKU: BAKVFR

The Supera Arc Flash Balaclava provides a 360 degree head and neck protection from Arc Flash dangers when used with the Cat 2 Arc Flash Face shields. Made from two layers of Kermel-viscose blend material. This hood is a NFPA 70E compliant to 16 Cal/cm2 and its inherent FR properties will not wash out. Kermel® is a very soft fiber that feels great next to the skin.

[Read More](#)



ARC FLASH SWITCHING LEGGINGS 52 CAL/CM2

SKU: EASCLX50

The ArcSafe® X50 Arc Flash Switching Leggings are made from orange etek™ NXT™ and T-Gard® III Plus thermal liner with an ATPV 52 PPE4 (HRC4). This new lightweight system is ideal for hot conditions and wicks moisture away from the body improving wearer comfort.

[Read More](#)





ARC FLASH SWITCHING TROUSERS 52 CAL/CM2

SKU: EASCTX50

The ArcSafe® X50 Arc Flash Switching Trousers is made from orange etek™ NXT™ and T-Gard® III Plus thermal liner with an ATPV 52 PPE4 (HRC4). This new lightweight system is ideal for hot conditions and wicks moisture away from the body improving wearer comfort. The ergonomic design includes articulated knees for a greater range of movement and improved comfort levels. Bib and brace design with 50mm wide braces and side tab closures for a snug fit.

[Read More](#)



ARC FLASH SWITCHING COAT 52 CAL/CM2

SKU: EASCCX50

The ArcSafe® X50 Arc Flash Switching Coat is made from orange etek™ NXT™ and T-Gard® III Plus thermal liner with an ATPV 52 PPE4 (HRC4). This new light weight system is ideal for hot conditions and wicks moisture away from the body improving wearer comfort. The ergonomic design includes an action back, underarm gussets and articulated sleeves for greater range of movement and improved comfort levels.

[Read More](#)





ARC FLASH SWITCHING JACKET 52 CAL/CM2

SKU: EASCJX50

The ArcSafe® X50 Arc Switching Jacket is made from orange etek™ NXT™ and T-Gard® III Plus thermal liner with an ATPV 52 PPE4 (HRC4). This new light weight system is ideal for hot conditions and wicks moisture away from the body improving wearer comfort. The ergonomic design includes an action back, underarm gussets and articulated sleeves for greater range of movement and improved comfort levels.

[Read More](#)



ARC FLASH SWITCHING HOOD 52 CAL/CM2

SKU: EASCHX50

The ArcSafe® X50 Arc Flash Switching Hood incorporates our new highly transparent ArcSafe face shield. The hood provides the user with full colour recognition. This new fabric system is ideal for hot conditions and wicks moisture away from the body improving wearer comfort.

[Read More](#)





ARCSAFE X50 ARC FLASH LIFT FRONT SWITCHING HOOD

SKU: EASCHLFX50

The ArcSafe® X50 Arc Flash Lift Front Switching Hood incorporates our new highly transparent ArcSafe Lift Front face shield. The hood provides the user with unmatched air ventilation and an easy way to effectively communicate with other teammates while maintaining safety on the job site. Simply grip the latch assembly located at the front of the shield, and lift the window. To lower the shield, just pull it back down into position.

[Read More](#)



ARC FLASH SWITCHING GLOVES 40 CAL/CM2

SKU: EASCGT40

The ArcSafe T40 Arc Flash Switching Gloves are inherently flame resistant, providing protection against electrical arc flash, and flash fire.

[Read More](#)





ARC FLASH SWITCHING GLOVES 9 CAL/CM2

SKU: EASCGT9

The ArcSafe T9 Arc Flash Switching Gloves are inherently flame resistant, providing protection against electrical arc flash, and flash fire.

[Read More](#)



ARC FLASH COVERALLS 9 CAL/CM2

SKU: TSCA700OR

EFO Supplies Tecasafe Plus fabric Arc Flash Coveralls that are inherently flame resistant and offer Electrical arc flash and flash fire protection. They are Extremely comfortable to wear, soft and breathable with excellent moisture management. Our Arc Flash Coveralls are abrasion resistant and maintains like new appearance after multiple industrial washes.

[Read More](#)





SALISBURY ARC FLASH FACE SHIELD 12 CAL/CM2

SKU: AS1200HAT-PP

The new Premium Salisbury Arc Flash Face shield is a Weight Balancing Arc Flash Face Shield and Helmet. It stows in a balanced compact position, centred over the top of the hard hat when not required. The Face shield has an ATPV rating of 12 cal/cm². Nanotechnology provides a more transparent window for improved visibility. The Salisbury Arc Flash Face Shield unit includes air vents below the chin that allow a natural convection air flow through the face shield. As a result this reduces fogging of the visor, lowers CO₂ levels and improves comfort for the user.

[Read More](#)



LOCKOUT AND TAG OUT

EFO supplies a range of Electrical Lockout and Tag out Kits to assist with compliance of Workplace Health and Safety lockout procedures for Electrical Equipment.

Furthermore we distribute a range of individual lockout devices. Circuit Breaker lockouts, Lockout Tags, Cable Lockouts, Keyed alike padlock solutions, Group Lock Boxes and Lock out Tag Out Stations. Our Electrical Lockout Kit Can be customised to suit your requirements. As well as offering fast turnaround.



3 PHASE PLUG AND HOSE LOCKOUT

SKU: PL3PHASE

This 3 Phase Plug and hose lockout is made from high impact plastic and is suitable for lockout of most 415V 3 Phase Plugs. Electrical Plug and Hose lockout devices are used for Lockout and Tagout when the plug is not under the exclusive control of the person performing service or maintenance.

[Read More](#)





GROUP LOCK BOX WALL MOUNTED

SKU: GLBOX-WMY

This Group Lock box Wall Mounted has a transparent poly carbonate window to let you view contents from the outside. It can be mounted in various positions and is bright yellow in colour for easy identification.

[Read More](#)



KEYED ALIKE LOCKOUT PADLOCKS 10 PACK

SKU: PBL410KA10

EFO Keyed Alike Lockout Padlocks are designed specifically for use in Lockout/Tagout applications. These Padlocks are compact yet rugged and have a body that is tough, Durable and ultra lightweight that make them ideal for use in harsh industrial environments. Multiple sized padlock sets available. Furthermore we can customize padlocks and Lockout Kits to suit your requirements.

[Read More](#)





OUT OF SERVICE TAGS 100 PACK WATERPROOF POLY

SKU: DLT5-100

Our High Quality waterproof Out of Service Tags are used for Lockout and Tagout of Equipment. They come in a convenient roll of 100. These lockout tags Are Waterproof, Tear resistant and feature individual Brass eyelets. This product is suited for indoors and short-term outdoor applications.

[Read More](#)



DO NOT OPERATE TAGS 100 PACK WATERPROOF POLY

SKU: DLT1-100

Our High Quality waterproof Do not Operate Tags are used for Lockout and Tagout of Equipment. They come in a convenient roll of 100. These lockout tags Are Waterproof, Tear resistant and feature individual Brass eyelets. This product is suited for indoors and short-term outdoor applications.

[Read More](#)





BUM BAG CONTRACTORS LOCKOUT TAGOUT KIT

SKU: LOKB

When attending to lockout maintenance and repair work, ensure you are prepared with a EFO Bum Bag Contractors Lockout Tagout Kit. This Lockout Tagout Kit contains all the basic devices required to lock out common Circuit Breakers. EFO lockout Kits are the best value for money on the market and can also be customised to suit your exact requirements.

[Read More](#)



INFORMATION TAGS 10 PACK REUSABLE

SKU: INFOT

Our High Quality Plastic Information Tags are used for instruction information of Equipment. They are supplied in a pack of 10. These information tags are Waterproof and Reusable. Unlike Paper and Plastic coated tags our product is 100% Plastic and will outlast other information Tags. products. [Out of Service Tags](#) and [Do Not Operate Tags](#) are also available in the same high quality material and can be viewed in the Lockout Tagout section.

[Read More](#)





MINIATURE CIRCUIT BREAKER LOCKOUT SIEMENS

SKU: CBL6

This Miniature Circuit Breaker Lockout is designed to lockout Siemens miniature circuit breakers. It can be used on single and multi pole breakers. EFO can also customise Lockout Kits to suit your company's risk management requirements.

[Read More](#)



SLIDER TOGGLE LOCKOUT

SKU: CBLSTL

This versatile Slider Toggle Lockout prevents the accidental activation of large circuit breakers and can work on a wide variety of flip lever style handle switches. It is made of red dielectric ABS plastic consisting of 2 parts: Mounting base and slider bar. It installs quickly and easily with rivets or screws installed after drilling a hole in the panel body. The lockout has provision for a lockout padlock.

[Read More](#)





STAINLESS STEEL HASP 25MM

SKU: HASP-SS25

The EFO 304 Stainless steel hasp is easy to use and is acceptable at most isolation locking points. They are ideal for harsh industrial environments.

[Read More](#)



PLUG AND HOSE LOCKOUT

SKU: PLL

This Plug and hose lockout is made from high impact plastic and is suitable for lockout of large single phase industrial Plugs. Electrical Plug and Hose lockout devices are used for Lockout and Tagout when the plug is not under the exclusive control of the person performing service or maintenance. These lockout devices can also be used to lockout air hose nipples.

[Read More](#)





TEMPORARY CABLE WIRE MANAGER

SKU: CABLE-WM

The Temporary Wire Manager is a very cost effective way to maintain job site safety. The Cable wire manager stows multiple cables and leads creating a clearer and cleaner workplace.

[Read More](#)



MINIATURE CIRCUIT BREAKER LOCKOUT

SKU: CBL4

This miniature circuit breaker lockout fro EFO is possibility the simplest, smallest and yet most versatile MCB lockouts available.

[Read More](#)



CARTRIDGE GRIP FUSE PULLER

SKU: FUSE-SGP

This cartridge grip fuse puller is a simple and safer way when replacing of removing cartridge-type fuses before implementing lockout procedures.

[Read More](#)

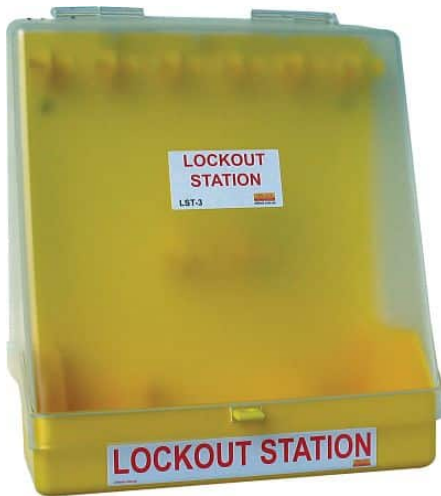


LOCKOUT TAGOUT STATION WITH LID

SKU: LST-LBASE

Our Lockout Tagout Station with lid is designed to hold up to 15 Lockout Tagout Padlocks. Furthermore additional compartments are proved for Tags and lockout Devices. All Lockout Stations can be Wall Mounted, but are also supplied with carry handle. The Cover lid is hinged at the top and is made from High Impact clear plastic. Additionally EFO Can customise your lockout Station with Lockout Tagout equipment to suit your requirements.

[Read More](#)





NO TOOL LOCKOUT TAGOUT DEVICE

SKU: CBLNT

Lockout Devices can help prevent un-intended energisation of a electrical supply. The new generation CBLNT no tool lockout Tagout Device for miniature circuit breakers makes isolation safer and also faster.

[Read More](#)



DIELECTRIC LOCKOUT TAGOUT PADLOCK

SKU: DPBL-KD-R

Designed for use in all lockout applications, our Dielectric Lockout Tagout Padlock enhances safety. Featuring a premium grade Nylon shackle and non-conductive, spark resistant body. The nylon shackle also cuts off the electrical current from the shackle to the key. Furthermore we can customize padlocks and Lockout Kits to suit your requirements.

[Read More](#)





KEYED ALIKE LOCKOUT PADLOCKS

SKU: PBL410KA

EFO Keyed Alike Lockout Padlocks are designed specifically for use in Lockout/Tagout applications. These Padlocks are compact yet rugged and have a body that is tough, Durable and ultra lightweight that make them ideal for use in harsh industrial environments. Multiple sized padlock sets available. Furthermore we can customize padlocks and Lockout Kits to suit your requirements.

[Read More](#)



GROUP LOCKOUT TAGOUT BOX

SKU: GLBOX

Group Lock boxes require fewer locks and are lighter than hasps on delicate energy isolating devices like circuit breakers. This Group Lockout Tagout Box from EFO allows keys to be inserted when box is locked. Transparent poly carbonate windows let you view contents from the outside. Pre-drilled holes in back allow for easy wall-mounting. It comes with hooks for hanging keys, locks, etc. inside the box.

[Read More](#)





PLUG AND HOSE LOCKOUT

SKU: PLS

Electrical Plug and Hose lockout devices are used for Lockout and Tagout when the plug is not under the exclusive control of the person performing service or maintenance. These lockout devices can also be used to lockout air hose nipples. The PLS Plug and hose lockout is made from high impact plastic and is suitable for lockout of most 240V Plugs.

[Read More](#)



OUT OF SERVICE TAGS 10 PACK REUSABLE

SKU: DLT5

Our High Quality Plastic Reusable Out of Service Tags tags are used for Lockout and Tagout of Equipment. They come in a pack of 10. These lockout tags Are Waterproof and Reusable. Unlike Paper and Plastic coated Lockout Tags our product is 100% Plastic and will outlast other Lockout Tagout products. Do Not Operate Tags are also available in the same high quality material and can be viewed in the Lockout Tagout section.

[Read More](#)





CUSTOM LOCKOUT TAGOUT KITS

SKU: Lockout Tagout Kits

[Read More](#)



DO NOT OPERATE TAGS 10 PACK REUSABLE

SKU: DLT1

Our High Quality Plastic Reusable Do not Operate Tags are used for Lockout and Tagout of Equipment. They come in a pack of 10. These lockout tags Are Waterproof and Reusable. Unlike Paper and Plastic coated Lockout Tags our product is 100% Plastic and will outlast other Lockout Tagout products. Out of Service Tags are also available in the same high quality material and can be viewed in the Lockout Tagout section.

[Read More](#)





CABLE LOCKOUT DEVICE WITH 1M CABLE

SKU: MPCL

Our Multi Function Cable Lockout Device has many applications. Lockout Gate Valves. Multiple electrical points and also multiple Circuit Breaker lockouts. Or anywhere regular Lockout Hasps won't fit.

[Read More](#)



PLASTIC BODY LOCKOUT PADLOCK

SKU: PBL410

Designed for use in all lockout Tagout applications. Our Plastic Body Lockout Padlock features a key retaining design to ensure the padlock is not left unlocked. Additionally the locks have permanent write-on labels for individual markings. Furthermore EFO can customise padlocks and Lockout Kits to suit your company risk management requirements.

[Read More](#)





CONTRACTORS LOCKOUT TAGOUT KIT

SKU: LOK

When attending to lockout maintenance and repair work, ensure you are prepared with a EFO Contractors Lockout Tagout Kit. This Lockout Tagout Kit contains all the basic devices required to lock out common Circuit Breakers. EFO lockout Kits are the best value for money on the market and can also be customised to suit your exact requirements.

[Read More](#)



LOCKOUT DEVICE MINIATURE CB PIN OUT TYPE

SKU: CBLPO

[Read More](#)





LOCKOUT DEVICE MINIATURE CB PIN IN TYPE

SKU: CBLPI

[Read More](#)



LARGE CB LOCKOUT DEVICE

SKU: CBL5

[Read More](#)





MOULDED CASE CB LOCKOUT DEVICE

SKU: CBL2

The EFO CBL2 Molded Case CB Lockout Tagout Device fits most common types of moulded case CB. Lockout Devices can help prevent unintended energisation of a electrical supply.

[Read More](#)



MINIATURE CB LOCKOUT DEVICE

SKU: CBL1

[Read More](#)



RESPIRATORY PROTECTIVE EQUIPMENT

EFO supplies Respiratory Protective Equipment for Electrical Workers and other Trades. Our options includes Disposable, Half or Full face Respirator Masks. These products supply the essential P2 and P3 Ratings protecting from potentially dangerous dusts, mists and fumes used in industry.



HONEYWELL FULL FACE RESPIRATOR KIT P3

SKU: RHSP-7600P3

The Honeywell 7600 Asbestos Silica Full Face Respirator Mask Kit is the quality choice for workers requiring protection when working around asbestos contaminated material, silica, dust and particulates (smoke). The kit comes complete with the 7600 series full face mask and P3 rated pancake filters plus 6 mask cleaning wipes. Pancake filters are flexible and lightweight and coupled with the 7600 mask; allow for longer wear times. Complete with a plastic lunchbox style, the container provides great storage for the mask, filters and wipes to keep them clean and to stop the filters being clogged up with dust when not in use.

[Read More](#)





HONEYWELL HALF MASK RESPIRATOR KIT

SKU: RHSP-7700P2

The 7700 Series Honeywell Half Mask Respirator is the most comfortable and durable half mask available. Its soft non allergenic silicone seal provides excellent protection, comfort and fit. The half mask cradle suspension system allows the face piece to seal evenly on the face without creating pressure points. Its low profile gives workers a wide field of vision. Featuring low inhalation and exhalation resistance the 7700 Series makes breathing easier to reduce worker fatigue. This Kit Contains the half face silicone mask, along with P3 filter sets for applications where users are working around asbestos or Silica contamination, or suspect traces in the working area.

[Read More](#)



ELECTRICAL WORKERS FALL PROTECTION

EFO is a preferred distributor of the Miller and ERGO ranges of Electrical Workers Fall Protection and harnesses. All of our fall protection equipment is tested to the relevant AS/NZS standards. When you buy Miller or ERGO fall protection equipment you can be assured the highest quality and safety on all jobs. These fall protection products can cover applications such as. roof. tower. ladder work. construction. scaffolding. welding. mining. confined space. elevated work platform (EWP). work positioning, static line systems and rescue work. EFO Specialists in Fall Protection for Electrical workers. Products Include Pole harnesses, Pole Straps and Pole Top Rescue Kits.



POLE TOP DESCENDER KIT

SKU: PTR

The EFO Pole Top Descender kit is suitable for customers that would already have existing PPE components required for pole top rescue .

[Read More](#)





POLE TOP RESCUE KIT

SKU: PTRKIT

The EFO Pole Top Rescue Kit is designed for rescuing a casualty suspended from their work position and fall arrest equipment when working on a pole. No assembly is required by the user. A safety knife is included in case of difficulty releasing the casualty. The rescuer accesses the casualty in order to recover them from the pole.

[Read More](#)



SPANSET POLE TOP HARNESS WITH BUTTOCK SEAT

SKU: 1600-ERGOIPLUS

The Australian made Spanset pole top harness is perfect for a variety of applications for electrical workers. Additionally it features a padded buttock seat for longer applications providing the ultimate in comfort. [ERGO iPlus](#) harnesses are our premium range of products and showcase some of our latest technology. Starting with the revolutionary, patented iWeb™, inspection-ready webbing which gives, for the first time, an objective inspection criteria for cuts and abrasion. Additionally, after many years of research we have arrived at our premium padding offer which, in the case of our ergonomically supportive waist belts, delivers on the ventilation performance so many have promised but failed to deliver. Comfortable enough to wear all day long these reliable harnesses are certified to AS/NZS 1891.1 and supported by a NATA accredited compliance and batch testing regime.

[Read More](#)





ERGO HARNESS WITH WAIST BELT

SKU: 1300ERGO-0

The ERGO Full body fall arrest harness with front fall arrest D and rear fall arrest D with waist belt is perfect low cost harness for roof, ladder systems, EWP maintenance and construction, ladder, tower and pole work.

[Read More](#)



AIRCORE TOWER WORKER HARNESS

SKU: M1020225

The Miller® AirCore Tower Worker Harness is a light-weight full-body harness. Its specifically designed breathable, open-core padding technology provides optimal air flow, reduces heat and moisture entrapment and keeps the worker drier and cooler.

[Read More](#)





LANYARD WITH SHOCK ABSORBER 1.2M

SKU: L11WEC1.2

Miller Lanyard with shock absorber are used in various fall arrest situations and are designed to limit the force of a sustained fall to under 6kN.

[Read More](#)



LINESMAN'S POLE STRAP 2.4M

SKU: 138.1

The Miller® electrical workers Linesman's Pole Strap 2.4m from EFO is fully adjustable Allowing for various work positioning applications.

[Read More](#)



LV COVERS AND BLANKETS

LV Covers and Blankets are designed to cover over power lines and mains. cross arms, fuses, links and communication cables. service wires and point of attachments. Underground LV Covers and Drapes are designed to screen substations, panels, switchboards. transformers, bus bars, cabinets, columns, pillars and pits. They provide temporary insulation from brush contact. during maintenance of potentially "live" low voltage electrical components. Our plastic guards are utilized by Utilities and Electrical Contractors. They are designed to provide temporary electrical insulation. mechanical protection and also visual warning of power lines and conductors.



SUBSTATION AND SWITCHBOARD DRAPE 1200X600MM

SKU: SBD2

Our Substation and Switchboard Drape 1200x600mm is designed to help screen potentially live electrical environments during routine maintenance. Tested and stamped to comply with Australian Standard AS-4202. Furthermore customized sizes can be ordered upon request.

[Read More](#)





SUBSTATION AND SWITCHBOARD DRAPE 600X450MM

SKU: SBD1

Our Substation and Switchboard Drape 600x450mm is designed to help screen potentially live electrical environments during routine maintenance. Tested and stamped to comply with Australian Standard AS-4202. Furthermore customized sizes can be ordered upon request.

[Read More](#)



STREET LIGHT COLUMN KIT

SKU: SLCKIT

The Low voltage Street Light Column Kit is designed to help screen potentially live electrical environments during routine maintenance. Our kits have been specified by Electrical Utilities and conform to local and international standards. And provide an easy to use solution with all necessary components in one place, also stored in a bag.

[Read More](#)





INSULATED LINESMAN'S COVER

SKU: LVLC

Our Insulated Linesman's Cover is utilised by Utilities and Electrical Contractors. They provide a temporary electrical insulation barrier during maintenance of power lines. Conductors, cabling, catenary wires, fuses, cross-arms, pins and links.

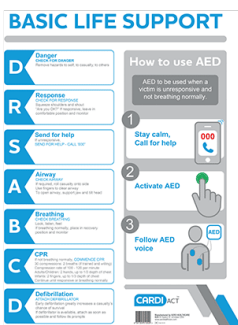
[Read More](#)



FIRST AID EQUIPMENT

EFO Supplies First Aid Equipment for Electrical and Mining industries based in Australia and also the Asia Pacific.

Organisations should adopt a risk management assessment to determine, select and supply appropriate equipment which will provide basic items for first aid should an incident occur. This risk management process must take into account the additional and special hazards encountered in the Electricity Supply Industry. Examples include electric shock, flash burns, snake bites and insect attacks. In Addition please contact Electrical Factory Outlet for any special requests not displayed on the web site.



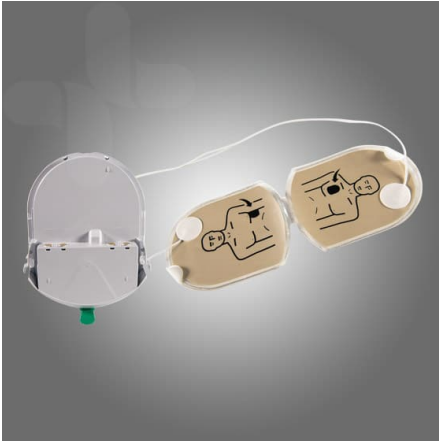
CARDIAC CPR WALL CHART 29.7 X 42CM (A3)

SKU: CPRWC

CARDIAC CPR Wall Chart 29.7 x 42cm (A3)

[Read More](#)





HEARTSINE GREY PADS & BATTERY PACK - ADULT

SKU: PAD-PAK-03

Replacement HEARTSINE Grey Pads & Battery Pack - Adult

[Read More](#)



AED WALL MOUNTED CABINET

SKU: cc-25

This indoor metal wall cabinet comes with Perspex front and complete with wall brackets. With its ARC approved AED signage, this cabinet ensures that your defibrillator is highly visible, increasing staff awareness and minimising lost time in time of an emergency. This attractive cabinet will also protect your AED from dust and grime.

[Read More](#)





HEARTSINE FULLY AUTOMATIC DEFIBRILLATOR

SKU: DEFIB

The sophisticated HeartSine fully automatic defibrillator is specially designed for use in workshops, vehicles and in public areas. Inside is a lightweight and easy-to-operate system. The HeartSine samaritan is a fully automatic defibrillator designed to analyse heart rhythm and automatically deliver an electrical shock (if needed). Its advanced technology is balanced against the demands of real-world use.

[Read More](#)



FIRST AID KIT WALL MOUNTED

SKU: IWM-29

The Industrial Workplace First Aid Kit Wall Mounted Plastic Cabinet suits medium to heavy industry situations. This first aid kit meets Workplace Health & Safety Standards, Australia wide. It also meets NSW A regulations. This kit will complement most high risk workplace environments.

[Read More](#)





ELECTRICAL FIRST AID AND BURNS KIT

SKU: EWFAB

Our Electrical First Aid Burns Kit meets ISSC14 Type B requirements and also contains the additional items for electrical workers as set out in table 3.2. Outlined in NSW Occupational Health and Safety Regulation and also Work Cover NSW - First Aid in the Workplace. Guide Legislation requires first aid kits to be made available at all work areas taking into consideration: The type of work; The work environment; and The numbers of personnel.

[Read More](#)



SNAKE BITE EMERGENCY KIT

SKU: SBKIT

The Snake bite emergency kit in a bum bag adjustable strap with clip comes with 'Snake Bite' identification on outside of kit and is for use in an emergency snake bite situation.

[Read More](#)





FIRST AID KIT MODULATOR WORKPLACE STANDARD

SKU: AFAKMODS4

A compact & versatile first aid kit containing injury specific modules to suit all your needs and requirements. Just one stop to treat any common injury.

[Read More](#)



ASBESTOS SAFETY FOR MINOR WORKS

EFO provides Asbestos Safety for minor works. Required by Electrical Workers and Tradespeople working around asbestos.

Whether they are aware of it or not, tradespeople. (particularly electricians, plumbers. air con technicians. carpenters. tilers and roofers). Come into contact with materials containing asbestos (ACM's) daily. Whilst not technically removing asbestos. Tradespeople may be required to cut, drill or penetrate ACM's to run pipes. cables or install circuit breakers etc. EFO supplies Asbestos protection PPE & Containment Kits. Asbestos face masks and also approved Asbestos H class vacuum cleaners.



HONEYWELL FULL FACE RESPIRATOR KIT P3

SKU: RHSP-7600P3

The Honeywell 7600 Asbestos Silica Full Face Respirator Mask Kit is the quality choice for workers requiring protection when working around asbestos contaminated material, silica, dust and particulates (smoke). The kit comes complete with the 7600 series full face mask and P3 rated pancake filters plus 6 mask cleaning wipes. Pancake filters are flexible and lightweight and coupled with the 7600 mask; allow for longer wear times. Complete with a plastic lunchbox style, the container provides great storage for the mask, filters and wipes to keep them clean and to stop the filters being clogged up with dust when not in use.

[Read More](#)



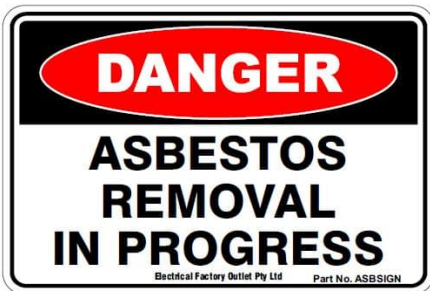


HONEYWELL HALF MASK RESPIRATOR KIT

SKU: RHSP-7700P2

The 7700 Series Honeywell Half Mask Respirator is the most comfortable and durable half mask available. Its soft non allergenic silicone seal provides excellent protection, comfort and fit. The half mask cradle suspension system allows the face piece to seal evenly on the face without creating pressure points. Its low profile gives workers a wide field of vision. Featuring low inhalation and exhalation resistance the 7700 Series makes breathing easier to reduce worker fatigue. This Kit Contains the half face silicone mask, along with P3 filter sets for applications where users are working around asbestos or Silica contamination, or suspect traces in the working area.

[Read More](#)



DANGER ASBESTOS REMOVAL SIGN 450MM X 300MM

SKU: ASBSIGN

The Danger Asbestos Removal sign is required by Level 2 Asps Contractors or Meter Installers when working around Asbestos. EFO also provides Asbestos Safety for minor works. Required by Electrical Workers and Tradespeople working around asbestos.

[Read More](#)





ASBESTOS REMOVAL KIT MINOR WORKS

SKU: HAZKIT

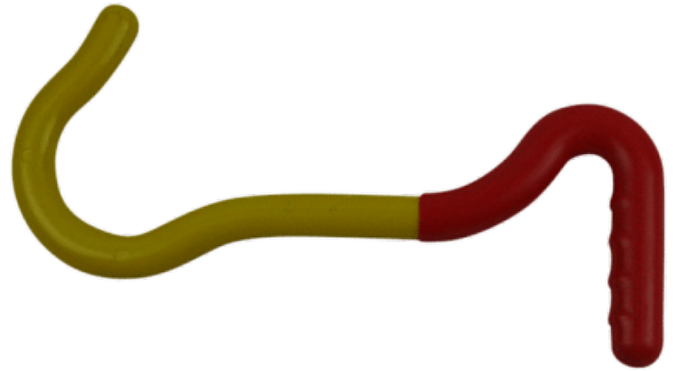
The EFO Asbestos Removal Kit provides a basic level of protection for Electrical workers and Tradespeople conducting minor works. Whether they are aware of it or not, tradespeople (particularly electricians, plumbers, air con technicians, carpenters, tilers and roofers). Come into contact with materials containing asbestos (ACM's) daily. Whilst not technically removing asbestos. Tradespeople may be required to cut, drill or penetrate ACM's to run pipes, cables or install circuit breakers etc.

[Read More](#)



FIBREGLASS RESCUE CROOKS

EFO Manufacturers and distributes quality Fibreglass Rescue Crooks for the Electrical industry. Our Rescue crooks are produced to the highest quality and are also tested to the relevant standards. The EFO Low Voltage Fibreglass Rescue Crooks are used in our LV Switchboard Rescue Kit. The Catu Rescue Crook is also used in our HV Switchboard Rescue Kit.



HIGH VOLTAGE RESCUE CROOK

SKU: CS-45

The Catu Rescue hook is designed for rescuing those who are being subjected to electrical shock without having to directly touch the person being shocked. The High Voltage Rescue Crook is a 45 kV rescue stick that measures 1.65m long. Constructed from white resin polyester and fibreglass foam filled tube. It also comes complete with wall mounted supports.

[Read More](#)



LOW VOLTAGE RESCUE CROOK

SKU: RCBM

The EFO Low Voltage Rescue Crook is used for Low voltage rescue applications. Uniquely our Rescue crook is the only one on the market with fibreglass construction and a double insulated handle. This only does not provide extra insulation. As well as identifying the correct end. Additionally the Crook has been Type tested to 10Kv. Also load testing of greater than 250Kg has been achieved.

[Read More](#)



TOOLS AND EQUIPMENT



1000V SOCKET TORX BITS 5 PCS

SKU: 81405

This High Quality Tolsen 1000V Socket Torx bits set contains 5 Torx socket adaptors to suit 3/8 drive insulated rachets or for use with our [insulated socket set](#). Sizes included are T10,T15,T20,T25 and T30. This set is commonly used for electric and hybrid vehicle maintenance and inspection. A plastic carry case is also supplied for storage.

[Read More](#)





1000V TORX SCREWDRIVER SET 5 PCS

SKU: 33505

This High Quality Tolsen 1000V Torx Screwdriver Set contains 5 Torx screwdrivers. Sizes included T10,T15,T20,T25 and T30. This set is commonly used for electric and hybrid vehicle maintenance and inspection. A plastic carry case is also supplied.

[Read More](#)



WATTMASTER 1000V LINESMAN'S PLIERS 225MM

SKU: LP1000

The Wattmaster 1000V Linesman's Pliers are heavy Duty Pliers tested to 1000V. These pliers are essential for any quality electrician's kit.

[Read More](#)





KLEIN SELF-ADJUSTING WIRE STRIPPER

SKU: 11061

The Klein Tools Self-Adjusting Wire Stripper / Cutter takes the guesswork out of stripping solid, stranded, and Romex® wire. As the name suggests, this tool features a self-adjusting stripping head for quick, precise wire stripping. It's especially useful in panels and other places where multiple types and sizes of wire are present. Great for HVAC applications.

[Read More](#)



ABC SERVICE LINE COMEALONG 95-150MM2

SKU: 12894

The EFO Large range ABC Service Line Comealong is designed for easy application. They are equipped with plated bodies, long fixed jaw and a spring loaded moving jaw which keeps the tool in place on the conductor. Suitable for ABC Cables ranging from 95mm² to 150mm².

[Read More](#)





CONTACT HIGH VOLTAGE DETECTOR 11KV

SKU: 213HVD

This Contact High Voltage Detector has been designed to meet the latest IEC standards. The HVDs are used to determine whether a system is live or not so that it may be safely earthed/grounded. It is self starting and automatically activated when high voltage is applied to the contact electrode.

[Read More](#)



HOUSE SERVICE FUSE PULLER 450MM

SKU: HS-450

The EFO House Service Fuse Puller is used by ASP's and REC's to remove the fuse carrier in barge type service fuse or fuse switch disconnecter. Lightweight with rubber grip handle the house service fuse puller allows the user to operate safely with one hand.

[Read More](#)



CARTRIDGE GRIP FUSE PULLER

SKU: FUSE-SGP

This cartridge grip fuse puller is a simple and safer way when replacing of removing cartridge-type fuses before implementing lockout procedures.

[Read More](#)



INSULATED FENCE & CROW BAR 15KV/1MIN

SKU: 7IB1650

Our Insulated Fence & Crow Bar is Insulated to 15KV for 1 Min. The Yellow under-layer provides a visual indication of any damage to the non-conductive grip. Furthermore it features a Finely ground and sharpened chisel end for digging holes.

[Read More](#)





CANVAS POLE BUCKET BAG

SKU: POLEBAG

The Klein Canvas Pole bucket bag made in the USA features Web strapping that extends down the side of the bucket rated at 68Kg. Further more it has a hard plastic base with drain holes. This is the perfect all round and low cost work bucket.

[Read More](#)



ABC SERVICE LINE COMEALONG

SKU: 12870

The EFO ABC Service Line Comealong is designed for easy application. They are equipped with plated bodies, long fixed jaw and a spring loaded moving jaw which keeps the tool in place on the conductor. Suitable for ABC Cables ranging from 16mm² to 35mm².

[Read More](#)





LIVE LINE HOT STICK 1.2M

SKU: HS-120

Our Live Line Hot Stick used for removing fuses and operation of testing devices when in close proximity from an insulated ladder or bucket. Made from high grade electrical rated fibreglass our Fixed Hot Stick is a very handy accessory for linemen and electrical workers.

[Read More](#)



LV FUSE REMOVER 800MM

SKU: HS-800

The HS-800 LV fuse remover provides a cost effective solution for removing LV fuses and operation of testing devices when in close proximity from an insulated ladder or bucket. Made from high grade electrical rated fibreglass our fuse remover is a very handy accessory for linemen and electrical workers.

[Read More](#)





TELESCOPIC HOT STICK 9.18M

SKU: HS7

The EFO HS7 Telescopic Hot Stick provides maximum flexibility and access for linesman needing to access electrical systems from a working distance. Its unique triangular design allows for easy operation without compromising strength and durability. Our Telescopic Hot Stick has been designed to telescopically extend and retract into itself with integrated locking buttons. All sections are made from high grade electrical rated fibreglass.

[Read More](#)



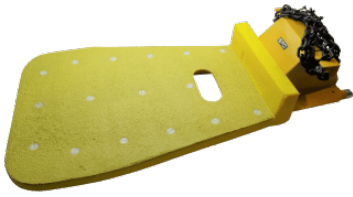
1000V INSULATED TORQUE SCREWDRIVER

SKU: TS9

One of the main advantages of our 1000V Insulated Torque Screwdriver Set is the precision torque control. This feature is crucial when you're working on switch-gear and consumer units helping alleviate the risk of damaging terminals, arcing circuits, or hot spotting. However more importantly it stops you under or over-tightening terminal screws. Each individually calibrated torque screwdriver ensures precise, easy adjustment between 1.0 - 5.0 Nm.

[Read More](#)



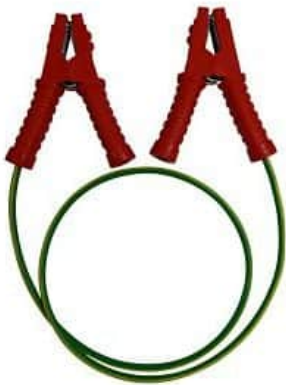


POLE WORK PLATFORM FOR TIMBER POLES

SKU: PPLATW

Designed especially for overhead line work, the EFO pole platform for timber poles is approved and used by many Utilities.

[Read More](#)



PLUMBERS TEMPORARY CONTINUITY BOND

SKU: PTCB

When working with Metallic water and gas services, plumbers can get an electric shock if there is a fault in the electrical supply system on the premises or in the street. Current will flow in the earth wire and onto water and gas piping system making it

[Read More](#)





TELESCOPIC HOT STICK 3.82M

SKU: HS3

The EFO HS3 Telescopic Hot Stick 3.82m provides maximum flexibility and access for linesman needing to access electrical systems from a working distance. Its unique triangular design allows for easy operation without compromising strength and durability. Our Telescopic Hot Stick has been designed to telescopically extend and retract into itself with integrated locking buttons. All sections are made from high grade electrical rated fibreglass.

[Read More](#)



LINESMAN'S WIRE SCRATCH BRUSH

SKU: DBWB-1

The Madi Dogbone Linesman's wire scratch brush Decreases outages, minimises open neutrals and bad connections. The Dogbone Uses one end for Aluminium and the other for Copper. Furthermore it has Integrated replaceable wire brushes.

[Read More](#)





1000V INSULATED TORQUE WRENCH 3/8 5-25 N.M

SKU: 43138

The Tolsen 1000V Insulated Torque Wrench is manufactured and tested to VDE specifications. Furthermore its features a high strength compact design with short reversing movement. 3/8" Drive with 5-25 N.m torque settings.

[Read More](#)



1000V INSULATED RING SPANNER SET 16/18MM

SKU: 82702

The High Quality Tolsen 1000V Insulated Ring Spanner Set specifically contains 16 and 18mm Insulated ring Spanners. Requested by the telecommunications industry. A plastic carry case is also supplied.

[Read More](#)





1000V RING GEAR WRENCH SET 11/15/16/18/19MM

SKU: 83005

The High Quality Tolsen Insulated 1000V Ring Gear Wrench Set contains 5 1000V Insulated Ratchet Ring Spanners and also comes in a plastic carry case.

[Read More](#)



INSULATED LINESMAN'S COVER

SKU: LVLC

Our Insulated Linesman's Cover is utilised by Utilities and Electrical Contractors. They provide a temporary electrical insulation barrier during maintenance of power lines. Conductors, cabling, catenary wires, fuses, cross-arms, pins and links.

[Read More](#)





ABC SERVICE LINE TENSIONER

SKU: ST12

[Read More](#)



1000V INSULATED STRAIGHT CABLE KNIFE

SKU: 50418

The Tolsen 1000V Insulated straight Cable Knife comes with a protective cover. Furthermore Tolsen 1000V Insulated Cable Knives are manufactured and tested to VDE specifications.

[Read More](#)



1000V INSULATED DISMANTLING KNIFE

SKU: 51416

The Tolsen 1000V Insulated Dismantling Knife comes with a protective cover. Used for stripping the outer sheath from electrical cables. Furthermore Tolsen 1000V Insulated Knives are manufactured and tested to VDE specifications.

[Read More](#)

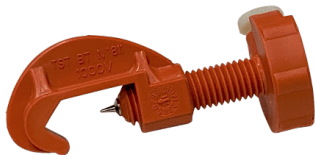


INSULATED CABLE TEST POINT FOR ABC

SKU: PP1514

The EFO Insulated Cable test point is suitable for ABC cable ranges up to 150mm². Connects to standard 4mm banana plug.

[Read More](#)





CABLE CORE SEPARATION TOOL

SKU: CIE100

Our Cable core separation tool suitable for LVABC up to and including 4 x 95mm². They can also be used on any multi-core cable.

[Read More](#)



IPC RATCHET SPANNER 13/17MM

SKU: RPS13/17-6H

RPS13/17-6H Long Blue Handle IPC Ratchet Spanner 13/17mm Reversible 6 Point Hex Suits Insulation Piercing Connectors.

[Read More](#)





FUSE EXTRACTOR PIG TAIL WITH 32MM ADAPTOR

SKU: LVDP32

The Fuse Extractor Pig tail is designed to fit 32mm diameter operating sticks.
Supplied with adaptor and pig tail which connects via the sunrise fitting.

[Read More](#)



NON-CONTACT HIGH VOLTAGE DETECTOR

SKU: HP300

The HP300 is a IP66 water-proof designed proximity tester for checking the presence of AC high and low voltages. It also has nine voltage detection settings from 240Vac to 275kVac. The Non-Contact High Voltage Detector provides detection of AC voltages with an internal pickup sensor plate. It attaches attaches via a sunrise fitting coupled with a Hot stick

[Read More](#)





LV FUSE EXTRACTOR PIGTAIL

SKU: LVDP

The EFO LV Fuse Extractor Pigtail head fits all standard operating sticks with universal or sunrise connector.

[Read More](#)



LV FUSE DISCONNECT HOOK

SKU: LVDH

The LV Fuse Disconnect Hook is designed to fit all standard operating sticks with universal or sunrise connection. Used for operation of FSD Units.

[Read More](#)





TELESCOPIC HOT STICK 7.78M

SKU: HS6

The EFO HS6 Telescopic Hot Stick 7.78M provides maximum flexibility and access for linesman needing to access electrical systems from a working distance. Its unique triangular design allows for easy operation without compromising strength and durability. Our Telescopic Hot Stick has been designed to telescopically extend and retract into itself with integrated locking buttons. All sections are made from high grade electrical rated fibreglass.

[Read More](#)



1000V RING SPANNER SET 10/11/12/13/14/15/17/19MM

SKU: 81908

The High Quality Tolsen Insulated 1000V Insulated Ring Spanner Set contains 10/11/12/13/14/15/17/19mm Insulated ring Spanners. A plastic carry case is also supplied.

[Read More](#)





1000V INSULATED HEX KEY SET 3/4/5/6/8/10MM

SKU: 81706

The Tolsen 6 Piece 1000V Insulated Hex Key Set contains 3,4,5,6,8,10mm Hex Keys. Tolsen 1000V Hex Keys are manufactured and tested to VDE specifications. A plastic carry case is also supplied.

[Read More](#)



1000V INSULATED SOCKET SET 20 PIECE

SKU: 80320

The High Quality Tolsen 20 Piece 1000V Insulated Socket Set contains Insulated Sockets ranging from 8mm to 22mm and a selection of Insulated Extensions bars and Handles. The Tolsen Insulated Socket Set also comes in a hard carry case to protect and store the Insulated Tools.

[Read More](#)





1000V RING GEAR WRENCH SET 10/12/13/14/17MM

SKU: 82005

The High Quality Tolsen Insulated 1000V Ring Gear Wrench Set contains 5 1000V Insulated Ratchet Ring Spanners and also comes in a plastic carry case.

[Read More](#)



1000V OPEN SPANNER SET 20 PIECE

SKU: 80421

The High Quality Tolsen 20 piece Insulated 1000V Open Spanner Set contains 19 PCS of VDE Approved 1000V Open end Wrenches and a 1000V Insulated Adjustable Wrench. Tolsen 1000V Insulated Open Spanner Set also comes in a hard carry case to protect and store the Insulated Tools.

[Read More](#)





1000V INSULATED CABLE KNIFE

SKU: 50819

The Tolsen 1000V Insulated Cable Knife has a changeable blade and also incorporates a retractable safety Cover. Furthermore Tolsen 1000V Insulated Cable Knife are manufactured and tested to VDE specifications.

[Read More](#)



1000V HEXAGON KEY T-WRENCH 6MM

SKU: 40706

The high quality Tolsen 1000V Hexagon Key T-Wrench from EFO. Manufactured and tested to VDE specifications. Required By ASP Providers.

[Read More](#)



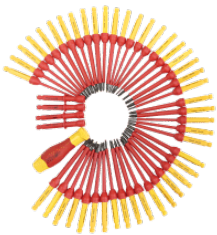


1000V HEXAGON KEY T-WRENCH 5MM

SKU: 40705

The high quality Tolsen 1000V Hexagon Key T-Wrench from EFO. Manufactured and tested to VDE specifications. Required By ASP Providers.

[Read More](#)



1000V INTERCHANGEABLE SCREWDRIVER SET 50 PIECE

SKU: 33450

The Tolsen 1000V Interchangeable Screwdriver Set. Blades made in S2 material, with black finish surface. Grip and sleeve manufactured according VDE to EN 60900 standard.

[Read More](#)





1000V INSULATED NUT DRIVER SET 6 PIECE

SKU: 32306

The high quality Tolsen 6 Piece 1000V Insulated Nut Driver Set from EFO. The Grip and sleeve are manufactured and tested to VDE specifications.

[Read More](#)



1000V INSULATED SCREWDRIVER SET 7 PIECE

SKU: 32607

The Tolsen 7 Piece 1000V Insulated Screwdriver Set is made from strong S2 material and are manufactured and tested to VDE specifications. These Insulated Screwdrivers have the tip type molded into the end of the handle for easy recognition. Tolsen 1000V Insulated Screwdrivers are a must for any serious electrician.

[Read More](#)





1000V INSULATED CABLE SHEARS

SKU: 11825

Tolsen 1000V Insulated Cable Shears or also parrot beak cutters are required when larger cable is required to be cut. They are manufactured and tested to VDE specifications.

[Read More](#)



1000V INSULATED MULTI GRIPS

SKU: 11630

The Tolsen 1000V Insulated Multi Grips are coated with a anti rust nickel plated surface. Manufactured and tested to VDE specifications.

[Read More](#)



1000V INSULATED TOOLS

EFO is the Australasian distributor for the extensive range of 1000V Insulated Tools from Tolsen. All products are manufactured to VDE IEC60900 standards. Undoubtedly we have the best selection of uniquely specialised Electrician's 1000V Insulated Tools. Including Torque Screwdrivers, Spanners, Socket Sets, Pliers, Cable cutters, Nut drivers, Cable Knives, Hexagonal Allen keys, Torque Wrenches and also Multi Grips. Our Insulated Tools are use for many different Electrical applications. Including Switchboard Maintenance, Solar Installation, Metering , Electric Vehicle maintenance and also Battery maintenance.



1000V SOCKET TORX BITS 5 PCS

SKU: 81405

This High Quality Tolsen 1000V Socket Torx bits set contains 5 Torx socket adaptors to suit 3/8 drive insulated rachets or for use with our [insulated socket set](#). Sizes included are T10,T15,T20,T25 and T30. This set is commonly used for electric and hybrid vehicle maintenance and inspection. A plastic carry case is also supplied for storage.

[Read More](#)





1000V TORX SCREWDRIVER SET 5 PCS

SKU: 33505

This High Quality Tolsen 1000V Torx Screwdriver Set contains 5 Torx screwdrivers. Sizes included T10,T15,T20,T25 and T30. This set is commonly used for electric and hybrid vehicle maintenance and inspection. A plastic carry case is also supplied.

[Read More](#)



WATTMASER 1000V LINESMAN'S PLIERS 225MM

SKU: LP1000

The Wattmaster 1000V Linesman's Pliers are heavy Duty Pliers tested to 1000V. These pliers are an essential for any quality electrician's kit.

[Read More](#)





1000V INSULATED TORQUE SCREWDRIVER

SKU: TS9

One of the main advantages of our 1000V Insulated Torque Screwdriver Set is the precision torque control. This feature is crucial when you're working on switch-gear and consumer units helping alleviate the risk of damaging terminals, arcing circuits, or hot spotting. However more importantly it stops you under or over-tightening terminal screws. Each individually calibrated torque screwdriver ensures precise, easy adjustment between 1.0 - 5.0 Nm.

[Read More](#)



1000V INSULATED TORQUE WRENCH 3/8 5-25 N.M

SKU: 43138

The Tolsen 1000V Insulated Torque Wrench is manufactured and tested to VDE specifications. Furthermore its features a high strength compact design with short reversing movement. 3/8" Drive with 5-25 N.m torque settings.

[Read More](#)





1000V INSULATED RING SPANNER SET 16/18MM

SKU: 82702

The High Quality Tolsen 1000V Insulated Ring Spanner Set specifically contains 16 and 18mm Insulated ring Spanners. Requested by the telecommunications industry. A plastic carry case is also supplied.

[Read More](#)



1000V RING GEAR WRENCH SET 11/15/16/18/19MM

SKU: 83005

The High Quality Tolsen Insulated 1000V Ring Gear Wrench Set contains 5 1000V Insulated Ratchet Ring Spanners and also comes in a plastic carry case.

[Read More](#)





1000V INSULATED STRAIGHT CABLE KNIFE

SKU: 50418

The Tolsen 1000V Insulated straight Cable Knife comes with a protective cover. Furthermore Tolsen 1000V Insulated Cable Knives are manufactured and tested to VDE specifications.

[Read More](#)



1000V INSULATED DISMANTLING KNIFE

SKU: 51416

The Tolsen 1000V Insulated Dismantling Knife comes with a protective cover. Used for stripping the outer sheath from electrical cables. Furthermore Tolsen 1000V Insulated Knives are manufactured and tested to VDE specifications.

[Read More](#)





1000V RING SPANNER SET 10/11/12/13/14/15/17/19MM

SKU: 81908

The High Quality Tolsen Insulated 1000V Insulated Ring Spanner Set contains 10/11/12/13/14/15/17/19mm Insulated ring Spanners. A plastic carry case is also supplied.

[Read More](#)



1000V INSULATED HEX KEY SET 3/4/5/6/8/10MM

SKU: 81706

The Tolsen 6 Piece 1000V Insulated Hex Key Set contains 3,4,5,6,8,10mm Hex Keys. Tolsen 1000V Hex Keys are manufactured and tested to VDE specifications. A plastic carry case is also supplied.

[Read More](#)





1000V INSULATED SOCKET SET 20 PIECE

SKU: 80320

The High Quality Tolsen 20 Piece 1000V Insulated Socket Set contains Insulated Sockets ranging from 8mm to 22mm and a selection of Insulated Extensions bars and Handles. The Tolsen Insulated Socket Set also comes in a hard carry case to protect and store the Insulated Tools.

[Read More](#)



1000V RING GEAR WRENCH SET 10/12/13/14/17MM

SKU: 82005

The High Quality Tolsen Insulated 1000V Ring Gear Wrench Set contains 5 1000V Insulated Ratchet Ring Spanners and also comes in a plastic carry case.

[Read More](#)





1000V OPEN SPANNER SET 20 PIECE

SKU: 80421

The High Quality Tolsen 20 piece Insulated 1000V Open Spanner Set contains 19 PCS of VDE Approved 1000V Open end Wrenches and a 1000V Insulated Adjustable Wrench. Tolsen 1000V Insulated Open Spanner Set also comes in a hard carry case to protect and store the Insulated Tools.

[Read More](#)



1000V INSULATED CABLE KNIFE

SKU: 50819

The Tolsen 1000V Insulated Cable Knife has a changeable blade and also incorporates a retractable safety Cover. Furthermore Tolsen 1000V Insulated Cable Knife are manufactured and tested to VDE specifications.

[Read More](#)



1000V HEXAGON KEY T-WRENCH 6MM

SKU: 40706

The high quality Tolsen 1000V Hexagon Key T-Wrench from EFO. Manufactured and tested to VDE specifications. Required By ASP Providers.

[Read More](#)



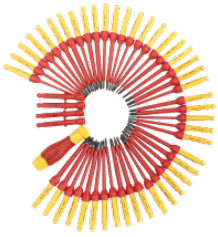
1000V HEXAGON KEY T-WRENCH 5MM

SKU: 40705

The high quality Tolsen 1000V Hexagon Key T-Wrench from EFO. Manufactured and tested to VDE specifications. Required By ASP Providers.

[Read More](#)





1000V INTERCHANGEABLE SCREWDRIVER SET 50 PIECE

SKU: 33450

The Tolsen 1000V Interchangeable Screwdriver Set. Blades made in S2 material, with black finish surface. Grip and sleeve manufactured according VDE to EN 60900 standard.

[Read More](#)



1000V INSULATED NUT DRIVER SET 6 PIECE

SKU: 32306

The high quality Tolsen 6 Piece 1000V Insulated Nut Driver Set from EFO. The Grip and sleeve are manufactured and tested to VDE specifications.

[Read More](#)





1000V INSULATED SCREWDRIVER SET 7 PIECE

SKU: 32607

The Tolsen 7 Piece 1000V Insulated Screwdriver Set is made from strong S2 material and are manufactured and tested to VDE specifications. These Insulated Screwdrivers have the tip type molded into the end of the handle for easy recognition. Tolsen 1000V Insulated Screwdrivers are a must for any serious electrician.

[Read More](#)



1000V INSULATED CABLE SHEARS

SKU: 11825

Tolsen 1000V Insulated Cable Shears or also parrot beak cutters are required when larger cable is required to be cut. They are manufactured and tested to VDE specifications.

[Read More](#)



1000V INSULATED MULTI GRIPS

SKU: 11630

The Tolsen 1000V Insulated Multi Grips are coated with a anti rust nickel plated surface. Manufactured and tested to VDE specifications.

[Read More](#)



PROFESSIONAL HAND TOOLS

EFO offers a selection of high quality Professional Hand Tools selected to provide quality and performance at reasonable pricing. Please contact the team at Electrical Factory Outlet if you have any additional requirements.



WATTMASTER 1000V LINESMAN'S PLIERS 225MM

SKU: LP1000

The Wattmaster 1000V Linesman's Pliers are heavy Duty Pliers tested to 1000V. These pliers are essential for any quality electrician's kit.

[Read More](#)





KLEIN SELF-ADJUSTING WIRE STRIPPER

SKU: 11061

The Klein Tools Self-Adjusting Wire Stripper / Cutter takes the guesswork out of stripping solid, stranded, and Romex® wire. As the name suggests, this tool features a self-adjusting stripping head for quick, precise wire stripping. It's especially useful in panels and other places where multiple types and sizes of wire are present. Great for HVAC applications.

[Read More](#)



1000V INSULATED CABLE SHEARS

SKU: 11825

Tolsen 1000V Insulated Cable Shears or also parrot beak cutters are required when larger cable is required to be cut. They are manufactured and tested to VDE specifications.

[Read More](#)



OVERHEAD LINE PRODUCTS

Our selection of Overhead Line Products represent the best quality products from the top manufactures. They are suitable for use by utilities and accredited electrical contractors. Furthermore all of our products have been tried and tested in the field, providing peace of mind that they are fit for purpose while representing great value. Additionally please contact the team at EFO if you have any other product requirements or special requests.



ABC SERVICE LINE COMEALONG 95-150MM2

SKU: 12894

The EFO Large range ABC Service Line Comealong is designed for easy application. They are equipped with plated bodies, long fixed jaw and a spring loaded moving jaw which keeps the tool in place on the conductor. Suitable for ABC Cables ranging from 95mm² to 150mm².

[Read More](#)





CANVAS POLE BUCKET BAG

SKU: POLEBAG

The Klein Canvas Pole bucket bag made in the USA features Web strapping that extends down the side of the bucket rated at 68Kg. Further more it has a hard plastic base with drain holes. This is the perfect all round and low cost work bucket.

[Read More](#)



ABC SERVICE LINE COMEALONG

SKU: 12870

The EFO ABC Service Line Comealong is designed for easy application. They are equipped with plated bodies, long fixed jaw and a spring loaded moving jaw which keeps the tool in place on the conductor. Suitable for ABC Cables ranging from 16mm² to 35mm².

[Read More](#)

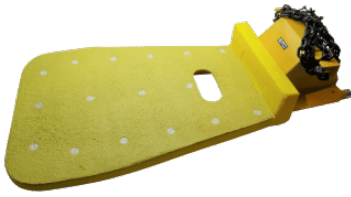


POLE WORK PLATFORM FOR TIMBER POLES

SKU: PPLATW

Designed especially for overhead line work, the EFO pole platform for timber poles is approved and used by many Utilities.

[Read More](#)



LINESMAN'S WIRE SCRATCH BRUSH

SKU: DBWB-1

The Madi Dogbone Linesman's wire scratch brush Decreases outages, minimises open neutrals and bad connections. The Dogbone Uses one end for Aluminium and the other for Copper. Furthermore it has Integrated replaceable wire brushes.

[Read More](#)





INSULATED LINESMAN'S COVER

SKU: LVLC

Our Insulated Linesman's Cover is utilised by Utilities and Electrical Contractors. They provide a temporary electrical insulation barrier during maintenance of power lines. Conductors, cabling, catenary wires, fuses, cross-arms, pins and links.

[Read More](#)

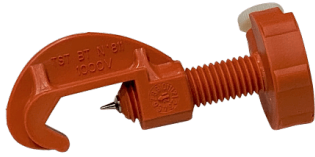


ABC SERVICE LINE TENSIONER

SKU: ST12

[Read More](#)





INSULATED CABLE TEST POINT FOR ABC

SKU: PP1514

The EFO Insulated Cable test point is suitable for ABC cable ranges up to 150mm². Connects to standard 4mm banana plug.

[Read More](#)



CABLE CORE SEPARATION TOOL

SKU: CIE100

Our Cable core separation tool suitable for LVABC up to and including 4 x 95mm². They can also be used on any multi-core cable.

[Read More](#)





IPC RATCHET SPANNER 13/17MM

SKU: RPS13/17-6H

RPS13/17-6H Long Blue Handle IPC Ratchet Spanner 13/17mm
Reversible 6 Point Hex Suits Insulation Piercing Connectors.

[Read More](#)



TELESCOPIC AND FIXED HOT STICKS

EFO Manufacturers a range of high quality Telescopic and fixed Hot Sticks. Our products include triangular telescopic hot sticks, Fixed Hot Sticks and fuse pullers. We

Also Supply Accessories including disconnect hooks, pigtail fuse removers and proximity voltage detectors. Our telescopic hot sticks are tested to withstand voltage ratings of 100kV from 30cm for 5 minutes.

Meaning you can work safely and easily from a safe distance. All products are made from high grade electrical rated fibreglass and other materials to comply with IEC 62193 safety standards. Furthermore we select with best quality and value products. Consequently Saving you time on confusing options.



CONTACT HIGH VOLTAGE DETECTOR 11KV

SKU: 213HVD

This Contact High Voltage Detector has been designed to meet the latest IEC standards. The HVDs are used to determine whether a system is live or not so that it may be safely earthed/grounded. It is self starting and automatically activated when high voltage is applied to the contact electrode.

[Read More](#)



HOUSE SERVICE FUSE PULLER 450MM

SKU: HS-450

The EFO House Service Fuse Puller is used by ASP's and REC's to remove the fuse carrier in barge type service fuse or fuse switch disconnecter. Lightweight with rubber grip handle the house service fuse puller allows the user to operate safely with one hand.

[Read More](#)



CARTRIDGE GRIP FUSE PULLER

SKU: FUSE-SGP

This cartridge grip fuse puller is a simple and safer way when replacing or removing cartridge-type fuses before implementing lockout procedures.

[Read More](#)





LIVE LINE HOT STICK 1.2M

SKU: HS-120

Our Live Line Hot Stick used for removing fuses and operation of testing devices when in close proximity from an insulated ladder or bucket. Made from high grade electrical rated fibreglass our Fixed Hot Stick is a very handy accessory for linemen and electrical workers.

[Read More](#)



LV FUSE REMOVER 800MM

SKU: HS-800

The HS-800 LV fuse remover provides a cost effective solution for removing LV fuses and operation of testing devices when in close proximity from an insulated ladder or bucket. Made from high grade electrical rated fibreglass our fuse remover is a very handy accessory for linemen and electrical workers.

[Read More](#)





TELESCOPIC HOT STICK 9.18M

SKU: HS7

The EFO HS7 Telescopic Hot Stick provides maximum flexibility and access for linesman needing to access electrical systems from a working distance. Its unique triangular design allows for easy operation without compromising strength and durability. Our Telescopic Hot Stick has been designed to telescopically extend and retract into itself with integrated locking buttons. All sections are made from high grade electrical rated fibreglass.

[Read More](#)



TELESCOPIC HOT STICK 3.82M

SKU: HS3

The EFO HS3 Telescopic Hot Stick 3.82m provides maximum flexibility and access for linesman needing to access electrical systems from a working distance. Its unique triangular design allows for easy operation without compromising strength and durability. Our Telescopic Hot Stick has been designed to telescopically extend and retract into itself with integrated locking buttons. All sections are made from high grade electrical rated fibreglass.

[Read More](#)





FUSE EXTRACTOR PIG TAIL WITH 32MM ADAPTOR

SKU: LVDP32

The Fuse Extractor Pig tail is designed to fit 32mm diameter operating sticks.
Supplied with adaptor and pig tail which connects via the sunrise fitting.

[Read More](#)



NON-CONTACT HIGH VOLTAGE DETECTOR

SKU: HP300

The HP300 is a IP66 water-proof designed proximity tester for checking the presence of AC high and low voltages. It also has nine voltage detection settings from 240Vac to 275kVac. The Non-Contact High Voltage Detector provides detection of AC voltages with an internal pickup sensor plate. It attaches attaches via a sunrise fitting coupled with a Hot stick

[Read More](#)





LV FUSE EXTRACTOR PIGTAIL

SKU: LVDP

The EFO LV Fuse Extractor Pigtail head fits all standard operating sticks with universal or sunrise connector.

[Read More](#)



LV FUSE DISCONNECT HOOK

SKU: LVDH

The LV Fuse Disconnect Hook is designed to fit all standard operating sticks with universal or sunrise connection. Used for operation of FSD Units.

[Read More](#)





TELESCOPIC HOT STICK 7.78M

SKU: HS6

The EFO HS6 Telescopic Hot Stick 7.78M provides maximum flexibility and access for linesman needing to access electrical systems from a working distance. Its unique triangular design allows for easy operation without compromising strength and durability. Our Telescopic Hot Stick has been designed to telescopically extend and retract into itself with integrated locking buttons. All sections are made from high grade electrical rated fibreglass.

[Read More](#)



INSULATED DIGGING TOOLS

EFO Distributes a range of Insulated Digging Tools for Utilities and Electrical workers. These products are also used by many other trades working in areas around potential electrical hazards.



INSULATED FENCE & CROW BAR 15KV/1MIN

SKU: 7IB1650

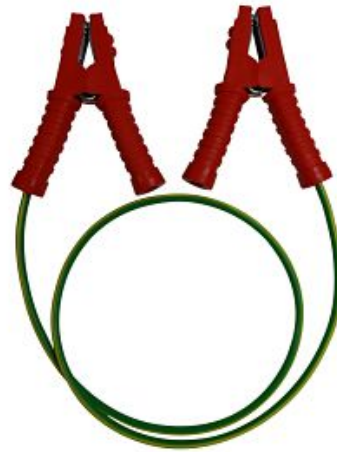
Our Insulated Fence & Crow Bar is Insulated to 15KV for 1 Min. The Yellow under-layer provides a visual indication of any damage to the non-conductive grip. Furthermore it features a Finely ground and sharpened chisel end for digging holes.

[Read More](#)



PLUMBERS TEMPORARY CONTINUITY BONDS

When working with Metallic water and gas services. Plumbers can get an electric shock if there is a fault in the electrical supply system on the premises or in the street. Current will flow in the earth wire and onto water and gas piping system. Making it live which can cause a serious or fatal electric shock. It is recommended a temporary bridging or temporary continuity bond. Is applied to both sides of the pipe being cut and kept in place until the work is complete. EFO Plumbers temporary continuity bonds fit a range of pipe sizes. Electrical insulated gloves should also be used when applying the temporary continuity bonds.



PLUMBERS TEMPORARY CONTINUITY BOND

SKU: PTCB

When working with Metallic water and gas services, plumbers can get an electric shock if there is a fault in the electrical supply system on the premises or in the street. Current will flow in the earth wire and onto water and gas piping system making it

[Read More](#)



LEVEL 2 ASP EQUIPMENT

Electrical tools for accredited service providers should be safe and efficient. EFO only supply's high quality level 2 ASP Equipment. Specifically designed for electrical contractors conducting Category 1. Category 2. Category 3 and Category 4 work. Level 2 ASP equipment is for electrical contractors undertaking underground and/or service work on utility networks. As such, you require a specific range of equipment to undertake the work from the point of supply. to the point of attachment and the meter box. As leading distributor level ASP Equipment our focus constantly improving design and functionality. Furthermore we provide the best quality and value products. Consequently Saving you time on confusing options.



WATTMASTER 1000V LINESMAN'S PLIERS 225MM

SKU: LP1000

The Wattmaster 1000V Linesman's Pliers are heavy Duty Pliers tested to 1000V. These pliers are essential for any quality electrician's kit.

[Read More](#)





EFO CONTACTLESS VOLTAGE TESTER

SKU: VS50

The EFO contactless voltage tester has been designed to meet the high quality and specifications required by Australian utilities and service providers. The operating range is 50-1000V with a overvoltage safety category rating of CAT IV 1000V. Furthermore the EFO VS50 contactless voltage tester features a self test and is contained in a IP65 rugged waterproof housing.

[Read More](#)



KLEIN SELF-ADJUSTING WIRE STRIPPER

SKU: 11061

The Klein Tools Self-Adjusting Wire Stripper / Cutter takes the guesswork out of stripping solid, stranded, and Romex® wire. As the name suggests, this tool features a self-adjusting stripping head for quick, precise wire stripping. It's especially useful in panels and other places where multiple types and sizes of wire are present. Great for HVAC applications.

[Read More](#)





POLE TOP DESCENDER KIT

SKU: PTR

The EFO Pole Top Descender kit is suitable for customers that would already have existing PPE components required for pole top rescue .

[Read More](#)



POLE TOP RESCUE KIT

SKU: PTRKIT

The EFO Pole Top Rescue Kit is designed for rescuing a casualty suspended from their work position and fall arrest equipment when working on a pole. No assembly is required by the user. A safety knife is included in case of difficulty releasing the casualty. The rescuer accesses the casualty in order to recover them from the pole.

[Read More](#)





M1120-V2-B BLUETOOTH NST NEUTRAL AND SUPPLY TESTER

SKU: M1120KIT-B

The Dewar M1120-V2 NST Neutral and Supply Tester was designed in conjunction with Power companies. To ensure the incoming Active and Neutral power connections to customer's premises are correctly identified and are safe to use before a power connection is made. EFO also supplies NST testing accessories and personal protective equipment. This is Bluetooth model for NSW and ACT only, as the maximum neutral to earth voltage is 10 volts. Click here for NST M1120-V2-B Neutral Supply Tester for QLD, SA and VIC.

[Read More](#)



M1121-V2-B BLUETOOTH NST NEUTRAL AND SUPPLY TESTER

SKU: M1121KIT-B

The Dewar M1121-V2 NST Neutral and Supply Tester was designed in conjunction with Power companies. To ensure the incoming Active and Neutral power connections to customer's premises are correctly identified and are safe to use before a power connection is made. EFO also supplies NST testing accessories and personal protective equipment. This is Bluetooth model for NSW and ACT only, as the maximum neutral to earth voltage is 10 volts. Click here for NST M1120-V2-B Neutral Supply Tester for QLD, SA and VIC.

[Read More](#)





ABC SERVICE LINE COMEALONG 95-150MM2

SKU: 12894

The EFO Large range ABC Service Line Comealong is designed for easy application. They are equipped with plated bodies, long fixed jaw and a spring loaded moving jaw which keeps the tool in place on the conductor. Suitable for ABC Cables ranging from 95mm² to 150mm².

[Read More](#)



DECO INDUSTRIAL HV LEATHER OUTERS

SKU: EOHVC

Deco HV leather over gloves are specifically designed for the use with high voltage insulating gloves. They are sized larger to allow easy fit over thicker HV Insulated gloves. Sizes are available from 8 through to 11.

[Read More](#)





SANWA 1000A CLAMP METER CAT IV 600V

SKU: DCM301

The Sanwa 1000A Clamp Meter is designed for measurements of low-voltage circuits in the application range of 1000V CAT III and 600V CAT IV. It is suited to current and voltage measurement of power lines, electrical equipment, and electrical facilities less than 1000Vrms to ground.

[Read More](#)



NON-CONTACT PHASE ROTATION METER 2M LEADS

SKU: PR3NC-2M

Our Non-Contact Phase Rotation Meter with 2M leads has been designed to for utility customers with 2M leads and CAT IV 600V Safety rating. Our Phase Rotation Meters are designed for Use with Utility workers, ASP Service providers and also electrical contractors.

[Read More](#)





ELECTRICAL INSTALLATION IN PROGRESS SIGN 450MM X 300MM

SKU: EIPSIGN

The Electrical Installation in Progress sign is required by Level 2 Asps Contractors or Meter Installers when working on a electrical installation.

[Read More](#)



HEARTSINE FULLY AUTOMATIC DEFIBRILLATOR

SKU: DEFIB

The sophisticated HeartSine fully automatic defibrillator is specially designed for use in workshops, vehicles and in public areas. Inside is a lightweight and easy-to-operate system. The HeartSine samaritan is a fully automatic defibrillator designed to analyse heart rhythm and automatically deliver an electrical shock (if needed). Its advanced technology is balanced against the demands of real-world use.

[Read More](#)





CUT-RESISTANT RIGGERS GLOVES

SKU: 6CH5SKG

Superior Endura goatskin Cut-Resistant Riggers Gloves are stronger and harder-wearing than other riggers gloves, and yet provide amazing feel and dexterity. With an ANSI puncture level 4 and cut level A4, these gloves are perfect when multiple hazards are present.

[Read More](#)



SUBSTATION AND SWITCHBOARD DRAPE 1200X600MM

SKU: SBD2

Our Substation and Switchboard Drape 1200x600mm is designed to help screen potentially live electrical environments during routine maintenance. Tested and stamped to comply with Australian Standard AS-4202. Furthermore customized sizes can be ordered upon request.

[Read More](#)





EXTENDED INDEPENDENT EARTH TRAILING LEAD

SKU: ETL20SS-L

The EFO ETL20SS-L Extended Independent Earth Trailing Lead sets a new standard of quality and safety. The 645mm Earth Stake was designed for customers with applications in [Loam](#) soil environments. The standard [ETL20SS](#) overall length is 400mm and is used for general applications. Combining several uniquely innovative functional features. Developed with leading utilities and equally supporting Australian manufacturing.

[Read More](#)



1000V ELECTRICAL INSULATED MAT AS/NZS 61111:2020

SKU: MATLV

Recommended for protection of personnel where there is a possibility of contact with electrical equipment or conductors in domestic, commercial and industrial work areas. Our 1000V electrical insulated mat is manufactured of high quality dielectric elastomer rubber to provide complete protection against electrical shock due to earth faults. EFO switchboard matting complies with the Australian and New Zealand standard AS/NZS 61111:2020.

[Read More](#)



HOUSE SERVICE FUSE PULLER 450MM

SKU: HS-450

The EFO House Service Fuse Puller is used by ASP's and REC's to remove the fuse carrier in barge type service fuse or fuse switch disconnecter. Lightweight with rubber grip handle the house service fuse puller allows the user to operate safely with one hand.

[Read More](#)



HONEYWELL HALF MASK RESPIRATOR KIT

SKU: RHSP-7700P2

The 7700 Series Honeywell Half Mask Respirator is the most comfortable and durable half mask available. Its soft non allergenic silicone seal provides excellent protection, comfort and fit. The half mask cradle suspension system allows the face piece to seal evenly on the face without creating pressure points. Its low profile gives workers a wide field of vision. Featuring low inhalation and exhalation resistance the 7700 Series makes breathing easier to reduce worker fatigue. This Kit Contains the half face silicone mask, along with P3 filter sets for applications where users are working around asbestos or Silica contamination, or suspect traces in the working area.

[Read More](#)





ELECTRICAL FIRST AID AND BURNS KIT

SKU: EWFAB

Our Electrical First Aid Burns Kit meets ISSC14 Type B requirements and also contains the additional items for electrical workers as set out in table 3.2. Outlined in NSW Occupational Health and Safety Regulation and also Work Cover NSW - First Aid in the Workplace. Guide Legislation requires first aid kits to be made available at all work areas taking into consideration: The type of work; The work environment; and The numbers of personnel.

[Read More](#)



1000V INSULATED GLOVE KIT

SKU: GLOVEKIT1000

The EFO 1000V Insulated Glove Kit provides effective individual protection for anyone required to work on live voltages and perform operations on or in proximity to electric installations.

[Read More](#)





500V INSULATED GLOVE KIT

SKU: GLOVEKIT500

The EFO 500V Insulated Glove Kit provides effective individual protection for anyone required to work on live voltages and perform operations on or in proximity to electric installations.

[Read More](#)



DECO GOATSKIN OVER GLOVES

SKU: EOVG

Deco Goatskin Over Gloves are used to provide mechanical protection from abrasion, cut, tear and also perforation. These gloves can be worn over [280mm Insulated Rubber Gloves](#) and 360mm insulated gloves. Sizes are available from 8 through to 12.

[Read More](#)



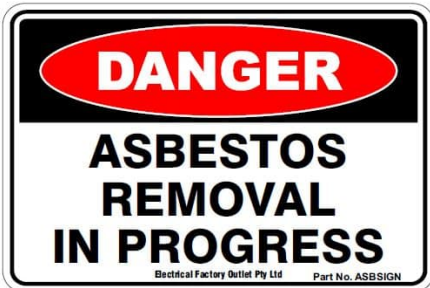


ABC SERVICE LINE COMEALONG

SKU: 12870

The EFO ABC Service Line Comealong is designed for easy application. They are equipped with plated bodies, long fixed jaw and a spring loaded moving jaw which keeps the tool in place on the conductor. Suitable for ABC Cables ranging from 16mm² to 35mm².

[Read More](#)



DANGER ASBESTOS REMOVAL SIGN 450MM X 300MM

SKU: ASBSIGN

The Danger Asbestos Removal sign is required by Level 2 Asps Contractors or Meter Installers when working around Asbestos. EFO also provides Asbestos Safety for minor works. Required by Electrical Workers and Tradespeople working around asbestos.

[Read More](#)





DECO 1000V INSULATED GLOVES

SKU: D1000

Deco 1000V insulated Gloves provide effective individual protection for anyone required to work on live voltages and perform operations on or in proximity to electric installations. Each Class 0 1000V Insulated glove is tested to AS/NZS IEC60903:2020 standard to ensure maximum efficiency and safety.

[Read More](#)



SUBSTATION AND SWITCHBOARD DRAPE 600X450MM

SKU: SBD1

Our Substation and Switchboard Drape 600x450mm is designed to help screen potentially live electrical environments during routine maintenance. Tested and stamped to comply with Australian Standard AS-4202. Furthermore customized sizes can be ordered upon request.

[Read More](#)





STREET LIGHT COLUMN KIT

SKU: SLCKIT

The Low voltage Street Light Column Kit is designed to help screen potentially live electrical environments during routine maintenance. Our kits have been specified by Electrical Utilities and conform to local and international standards. And provide an easy to use solution with all necessary components in one place, also stored in a bag.

[Read More](#)



LV FUSE REMOVER 800MM

SKU: HS-800

The HS-800 LV fuse remover provides a cost effective solution for removing LV fuses and operation of testing devices when in close proximity from an insulated ladder or bucket. Made from high grade electrical rated fibreglass our fuse remover is a very handy accessory for linemen and electrical workers.

[Read More](#)





7A LOAD UNIT 2000W CAT IV

SKU: L2000W

The EFO Loadlead provides a cost effective and safer method to connect an electrical load whilst testing meter operation at the switchboard. It consists of 2 fused probes, test leads and Socket. Rated at CAT IV 500V you can use the Loadlead with the EFO portable load or any 240V double insulated appliance with a output not exceeding 2000W. Combining Our LOADLEAD together with our 7A Load Unit 2000W you can apply a 7A Load test. The load unit is also supplied with a hanging hook, crocodile clips and a carry bag.

[Read More](#)



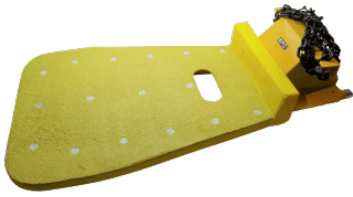
1000V INSULATED TORQUE SCREWDRIVER

SKU: TS9

One of the main advantages of our 1000V Insulated Torque Screwdriver Set is the precision torque control. This feature is crucial when you're working on switch-gear and consumer units helping alleviate the risk of damaging terminals, arcing circuits, or hot spotting. However more importantly it stops you under or over-tightening terminal screws. Each individually calibrated torque screwdriver ensures precise, easy adjustment between 1.0 - 5.0 Nm.

[Read More](#)





POLE WORK PLATFORM FOR TIMBER POLES

SKU: PPLATW

Designed especially for overhead line work, the EFO pole platform for timber poles is approved and used by many Utilities.

[Read More](#)



TELESCOPIC HOT STICK 3.82M

SKU: HS3

The EFO HS3 Telescopic Hot Stick 3.82m provides maximum flexibility and access for linesman needing to access electrical systems from a working distance. Its unique triangular design allows for easy operation without compromising strength and durability. Our Telescopic Hot Stick has been designed to telescopically extend and retract into itself with integrated locking buttons. All sections are made from high grade electrical rated fibreglass.

[Read More](#)





LINESMAN'S WIRE SCRATCH BRUSH

SKU: DBWB-1

The Madi Dogbone Linesman's wire scratch brush Decreases outages, minimises open neutrals and bad connections. The Dogbone Uses one end for Aluminium and the other for Copper. Furthermore it has Integrated replaceable wire brushes.

[Read More](#)



SALISBURY ARC FLASH FACE SHIELD 12 CAL/CM2

SKU: AS1200HAT-PP

The new Premium Salisbury Arc Flash Face shield is a Weight Balancing Arc Flash Face Shield and Helmet. It stows in a balanced compact position, centred over the top of the hard hat when not required. The Face shield has an ATPV rating of 12 cal/cm². Nanotechnology provides a more transparent window for improved visibility. The Salisbury Arc Flash Face Shield unit includes ait vents below the chin that allow a natural convection air flow through the face shield. As a result this reduces fogging of the visor, lowers CO₂ levels and improves comfort for the user.

[Read More](#)





INDEPENDENT EARTH TRAILING LEAD

SKU: ETL20SS

The EFO Independent Earth Trailing Lead sets a new standard of quality and safety. Combining several uniquely innovative functional features. Developed with leading utilities and equally supporting Australian manufacturing.

[Read More](#)



INSULATED LINESMAN'S COVER

SKU: LVLC

Our Insulated Linesman's Cover is utilised by Utilities and Electrical Contractors. They provide a temporary electrical insulation barrier during maintenance of power lines. Conductors, cabling, catenary wires, fuses, cross-arms, pins and links.

[Read More](#)





ABC SERVICE LINE TENSIONER

SKU: ST12

[Read More](#)



NON-CONTACT PHASE ROTATION METER CAT IV

SKU: PR3NC

Our Non-Contact Phase Rotation Meter has been designed to the highest Safety Rating CAT IV 600V. Our Phase Rotation Meters are designed for Use with Utility workers, ASP Service providers and also electrical contractors.

[Read More](#)





FUSED TEST LAMPS WITH MAGNETIC HOLDER

SKU: MTL2W

Additional features built into the MTL2W series fused test lamps create a very versatile and safe tester. A convenient magnetic holder has also been developed to hang the tester for hands free operation where suitable. Two bright 25W bulbs are fitted with innovative safety guards built into the mould, protecting the user from coming into contact with the lamps. Furthermore decreasing the chance of accidental breakage. 2 x fused 1 metre test leads provide a working span of 2 metres. Our Series Test Lamps are CATIV 500V safety rated and is supplied with 2 x chisel probes, magnetic holder and also a carry bag. Optional changeable probe tips and crocodile clips are available separately.

[Read More](#)



ROLL UP BAG FOR INSULATED MATS

SKU: MATBAG

The Convenient EFO Roll up Carry Bag for Insulated Mats. Not only does it protect the Insulated Switchboard Matting but also can be used as a ground sheet. Insulated Mats can quickly be rolled into the bag as well as reducing the storage space required. Furthermore the bag comes with a strong carry strap.

[Read More](#)





ERGO HARNESS WITH WAIST BELT

SKU: 1300ERGO-0

The ERGO Full body fall arrest harness with front fall arrest D and rear fall arrest D with waist belt is perfect low cost harness for roof, ladder systems, EWP maintenance and construction, ladder, tower and pole work.

[Read More](#)



CONTACT PHASE ROTATION METER CAT IV

SKU: PR3

[Read More](#)





INSULATED CABLE TEST POINT FOR ABC

SKU: PP1514

The EFO Insulated Cable test point is suitable for ABC cable ranges up to 150mm². Connects to standard 4mm banana plug.

[Read More](#)



CABLE CORE SEPARATION TOOL

SKU: CIE100

Our Cable core separation tool suitable for LVABC up to and including 4 x 95mm². They can also be used on any multi-core cable.

[Read More](#)



EFO INSULATED GLOVE KIT AVAILABLE IN ALL VOLTAGES

SKU: GLOVEKIT

EFO Insulated Glove Kit provides effective individual protection for anyone required to work on live voltages and perform operations on or in proximity to electric installations. Available from Class 00 to Class 4.

[Read More](#)



EFO CANVAS GLOVE BAG WITH HANGING CLIP

SKU: GLOVEBAG

The EFO Canvas Glove bag is made from high quality Canvas. Designed for storage of insulated Gloves. Furthermore is features a hang clip on the back.

[Read More](#)





ELECTRICAL INSULATED MAT AS/NZS 2978

SKU: MAT2978

The AS/NZS 2978 standard has been superseded by AS/NZS IEC6111:2020. Please refer to our part numbers [MATLV](#) or MATHV for all insulated matting products. Tagged to 1000V our low voltage insulated matting can be supplied in a lightweight 3mm thick mat ([MATLV](#)) or a heavier 5mm thick mat (MATHV) depending on your application. EFO switchboard matting is manufactured using high quality elastomer rubber to provide complete protection against electrical shock due to earth faults.

[Read More](#)



IPC RATCHET SPANNER 13/17MM

SKU: RPS13/17-6H

RPS13/17-6H Long Blue Handle IPC Ratchet Spanner 13/17mm Reversible 6 Point Hex Suits Insulation Piercing Connectors.

[Read More](#)



COTTON KNITTED GLOVE LINERS

SKU: KCGL

[Read More](#)



AIRCORE TOWER WORKER HARNESS

SKU: M1020225

The Miller® AirCore Tower Worker Harness is a light-weight full-body harness. Its specifically designed breathable, open-core padding technology provides optimal air flow, reduces heat and moisture entrapment and keeps the worker drier and cooler.

[Read More](#)





LANYARD WITH SHOCK ABSORBER 1.2M

SKU: L11WEC1.2

Miller Lanyard with shock absorber are used in various fall arrest situations and are designed to limit the force of a sustained fall to under 6kN.

[Read More](#)



LINESMAN'S POLE STRAP 2.4M

SKU: 138.1

The Miller® electrical workers Linesman's Pole Strap 2.4m from EFO is fully adjustable Allowing for various work positioning applications.

[Read More](#)





SALISBURY LEATHER OVER GLOVES

SKU: ILPG3S

Salisbury Leather Over Gloves are used to provide mechanical protection from abrasion, cut, tear and also perforation. Over gloves should always be worn over Insulated Rubber Gloves to provide the needed mechanical protection. Salisbury ILPG series have a High visibility Orange Cuff. Furthermore these leather Protectors meet ASTM F696 standards and are available in sizes 8-12.

[Read More](#)



LV SWITCHBOARD RESCUE KIT

SKU: LVSBRKIT

The LV Switchboard Rescue Kit is designed to be used by a safety observer for the safe rescue of victims of electrical shock and other injuries when working on Low Voltage switchboards and substations. The kit is designed to comply with Australian Standard AS4836 requirements Safe Working On Low Voltage Electrical Installations.

[Read More](#)



1000V HEXAGON KEY T-WRENCH 6MM

SKU: 40706

The high quality Tolsen 1000V Hexagon Key T-Wrench from EFO. Manufactured and tested to VDE specifications. Required By ASP Providers.

[Read More](#)



1000V HEXAGON KEY T-WRENCH 5MM

SKU: 40705

The high quality Tolsen 1000V Hexagon Key T-Wrench from EFO. Manufactured and tested to VDE specifications. Required By ASP Providers.

[Read More](#)



EV MAINTENANCE AND SAFETY

Electrical Factory Outlet has developed a range of Electric Vehicle EV Maintenance and Safety Products. Based on many of the requirements of AS 5732:2015. Electric Vehicle Operations Maintenance and Repair.

The electrical safety cabinet for EV Maintenance has also been developed. Built by EFO so as to enable safe working for Trained and Certified Mechanics and Technicians. Performing service and maintenance on EV and Hybrid vehicles. The dust and water resistant cabinet has also been designed to be wall mounted and easily accessible.



1000V SOCKET TORX BITS 5 PCS

SKU: 81405

This High Quality Tolsen 1000V Socket Torx bits set contains 5 Torx socket adaptors to suit 3/8 drive insulated rachets or for use with our [insulated socket set](#). Sizes included are T10,T15,T20,T25 and T30. This set is commonly used for electric and hybrid vehicle maintenance and inspection. A plastic carry case is also supplied for storage.

[Read More](#)





1000V TORX SCREWDRIVER SET 5 PCS

SKU: 33505

This High Quality Tolsen 1000V Torx Screwdriver Set contains 5 Torx screwdrivers. Sizes included T10,T15,T20,T25 and T30. This set is commonly used for electric and hybrid vehicle maintenance and inspection. A plastic carry case is also supplied.

[Read More](#)



EV VEHICLE WORKSHOP SAFETY & TOOL TROLLEY

SKU: EVSTROLLEY

The EFO EV Vehicle Workshop Safety & Tool trolley contains the basic safety equipment and signage requirements of AS 5732:2022 "Electric Vehicle Operations Maintenance and Repair." Designed to be portable with locking wheels the trolley can be moved to any bay the EV or Hybrid vehicle is being worked on. The emergency equipment will always be near to the potential risk area.

[Read More](#)





EV EXCLUSION ZONE KIT

SKU: EVEXKIT

The EV Exclusion zone kit is a convenient solution to creating a temporary exclusion zone around a vehicle under repair or maintenance. The 6 cones easily stack together to stow when not in use.

[Read More](#)



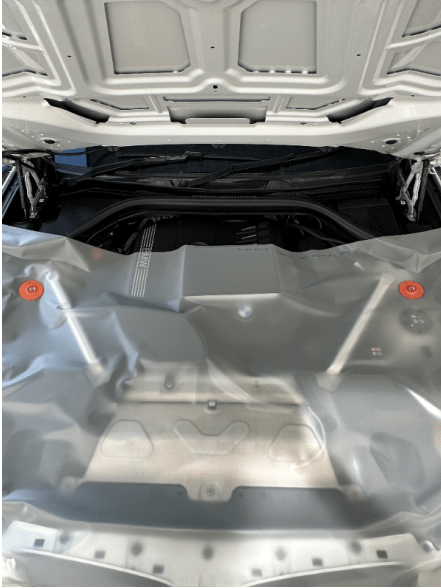
MAGNET FOR INSULATING BLANKETS 1500V DC

SKU: IBMAGNET

Insulated magnets can be used to fix the insulating blanket [IBCLEAR-2M](#) to metallic or non-metallic supports by placing the magnets in opposition.

[Read More](#)





1500V DC INSULATING BLANKET

SKU: IBCLEAR-2

1500V DC Clear Insulating Blanket for workers operating on live parts or in the vicinity of live parts. This insulating blanket translucent and is very soft to avoid scratching delicate surfaces.

[Read More](#)



ARC FLASH SWITCHING JACKET 9 CAL/CM2 870MM

SKU: EASCJT9

The ArcSafe® 9 cal/cm2 HRC2 ArcFlash Switching Jacket are inherently flame resistant, providing protection against electrical arc flashes and flash fires.

[Read More](#)





ARC FLASH SWITCHING COAT 9 CAL/CM2 1300MM

SKU: EASCCT9

The ArcSafe® 9 cal/cm2 HRC2 ArcFlash Switching Coat are inherently flame resistant, providing protection against electrical arc flashes and flash fires.

[Read More](#)



INSULATED GLOVE INFLATOR TESTER

SKU: GLOVEIN

The EFO Insulated Glove Inflater Tester is a portable device that conducts a air test on Insulated gloves and assists users during visual inspection to search for any abrasion, cuts, tears or punctures. Our Glove inflater can be used anywhere and comes with a durable storage bag made out of canvas and a strap to hold the rubber insulating glove in place.

[Read More](#)





ELECTRIC VEHICLE EMERGENCY PLUG

SKU: EVEP

The Electric Vehicle Emergency Plug is intended to temporarily block an electric vehicle from unpredictable vehicle behaviour. The Emergency-plug sends a charging signal to an electric vehicle. The charging signal automatically switches the vehicle to the P position (parking) or the N position (neutral). This blocks the vehicle so that it cannot drive away. All other functions of the vehicle remain usable.

[Read More](#)



LITHIUM-ION FIRE EXTINGUISHER

SKU: FEV4F-500

The Wormald F500 Lithium-Ion Fire Extinguisher provides protection against a Lithium-Ion fire. It contains a multiple-purpose firefighting agent which is ideal for Class A, B and F fire. It is the only agent proven to extinguish fires of lithium-ion batteries without reignition. The F500 Encapsulator Agent, when mixed with water, works by encapsulating a water-droplet and enhancing its natural cooling effect. When directed at a lithium-ion battery fire it also provides a blanket to drastically reduce toxic smoke emissions.

[Read More](#)





DIELECTRIC SAFETY BOOTS 20KV

SKU: DSBOOT

These Dielectric Safety Boots 20KV supplied by EFO are of the Highest specification, fully waterproof and hand-built. Manufactured with specially formulated insulating layers offering electrical protection over the whole boot.

[Read More](#)



GROUP LOCK BOX WALL MOUNTED

SKU: GLBOX-WMY

This Group Lock box Wall Mounted has a transparent poly carbonate window to let you view contents from the outside. It can be mounted in various positions and is bright yellow in colour for easy identification.

[Read More](#)





STEERING WHEEL LOCKOUT

SKU: SWC50

Steering Wheel lockout used for the lockout and warning of vehicles when under repair or maintenance in a workshop.

[Read More](#)



MAGNETIC ROOF SIGN ISOLATED

SKU: MRS-ISOLATED

Magnetic Roof Sign Isolated reads HV Battery on 2 sides and Isolated on 2 sides. Protected magnetic base attaches to EV car roof top displaying a warning when in use.

[Read More](#)



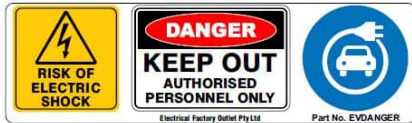


MAGNETIC ROOF SIGN DANGER

SKU: MRS-EV

Magnetic Roof Sign Danger reads High Voltage on 2 sides and Dander on 2 sides. Protected magnetic base attaches to EV car roof top displaying a waring when in use.

[Read More](#)



EV DANGER SIGN

SKU: EVDANGER

EV Danger sign reads DANGER KEEP OUT, Authorised Personal Only. Can be used in conjunction with bunting and bollard to create a exclusion zone around the vehicle. Poly 120mm x 410mm.

[Read More](#)





SERVICE CAUTION SIGN

SKU: EVCAUTION

Service caution sign reads Service/Repair work is currently being carried out on a plug-In Electric, Hybrid Electric, Battery Electric or Plug-In Hybrid vehicle in this workshop. DO NOT TOUCH. Poly 450mm x 300mm.

[Read More](#)



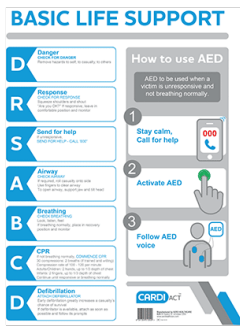
BATTERY STORAGE CAUTION SIGN

SKU: RESSCAUTION

Battery Storage Caution Sign reads High voltage rechargeable energy storage system present. DO NOT TOUCH. Authorised person only to move. Authorised person with space provided for name to be placed. Poly 450mm x 300mm.

[Read More](#)





CARDIAC CPR WALL CHART 29.7 X 42CM (A3)

SKU: CPRWC

CARDIAC CPR Wall Chart 29.7 x 42cm (A3)

[Read More](#)



HEARTSINE GREY PADS & BATTERY PACK - ADULT

SKU: PAD-PAK-03

Replacement HEARTSINE Grey Pads & Battery Pack - Adult

[Read More](#)





AED WALL MOUNTED CABINET

SKU: cc-25

This indoor metal wall cabinet comes with Perspex front and complete with wall brackets. With its ARC approved AED signage, this cabinet ensures that your defibrillator is highly visible, increasing staff awareness and minimising lost time in time of an emergency. This attractive cabinet will also protect your AED from dust and grime.

[Read More](#)



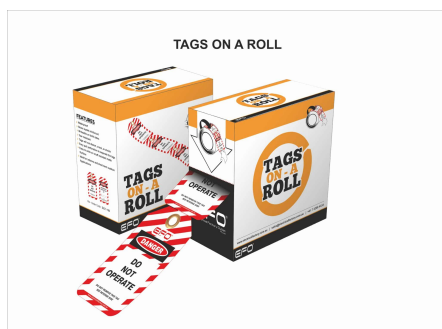
HEARTSINE FULLY AUTOMATIC DEFIBRILLATOR

SKU: DEFIB

The sophisticated HeartSine fully automatic defibrillator is specially designed for use in workshops, vehicles and in public areas. Inside is a lightweight and easy-to-operate system. The HeartSine samaritan is a fully automatic defibrillator designed to analyse heart rhythm and automatically deliver an electrical shock (if needed). Its advanced technology is balanced against the demands of real-world use.

[Read More](#)





DO NOT OPERATE TAGS 100 PACK WATERPROOF POLY

SKU: DLT1-100

Our High Quality waterproof Do not Operate Tags are used for Lockout and Tagout of Equipment. They come in a convenient roll of 100. These lockout tags Are Waterproof, Tear resistant and feature individual Brass eyelets. This product is suited for indoors and short-term outdoor applications.

[Read More](#)



SEW DIGITAL MILLIOHM METER

SKU: 4137MO

The microprocessor controlled SEW Digital Milliohm Meter comes supplied from EFO with a set of high quality kelvin test leads to assist in making accurate measurements.

[Read More](#)





1000V ELECTRICAL INSULATED MAT AS/NZS 61111:2020

SKU: MATLV

Recommended for protection of personnel where there is a possibility of contact with electrical equipment or conductors in domestic, commercial and industrial work areas. Our 1000V electrical insulated mat is manufactured of high quality dielectric elastomer rubber to provide complete protection against electrical shock due to earth faults. EFO switchboard matting complies with the Australian and New Zealand standard AS/NZS 61111:2020.

[Read More](#)



ARC FLASH HELMET BAG PADDED

SKU: AFH-BAG

Our Arc Flash Helmet Padded bag protects your face shield and helmet from potential damage when in storage. It suits a variety of face shields and helmets supplied by EFO ranging from 12 to 40 Cal/cm². Please contact one of the Sales team for further information.

[Read More](#)





KLEIN INSULATION RESISTANCE TESTER

SKU: ET600

The ET600 Klein Insulation Resistance Tester a multi-function Megohmmeter capable of producing 125V, 250V, 500V, and 1000V test voltages for insulation resistance measurements up to 4000MΩ. Also tests AC/DC voltages up to 1000V with automatic ranging True RMS technology. Convenient lock function and built-in stand for hands free operation. Dual-function backlit display monitors process.

[Read More](#)



1000V INSULATED GLOVE KIT

SKU: GLOVEKIT1000

The EFO 1000V Insulated Glove Kit provides effective individual protection for anyone required to work on live voltages and perform operations on or in proximity to electric installations.

[Read More](#)





ELECTRICAL SAFETY CABINET FOR EV MAINTENANCE

SKU: EVWKIT

The electrical safety cabinet for EV Maintenance has been developed and built by EFO to enable safe working for Trained and Certified Mechanics and Technicians who perform service and maintenance on EV and Hybrid vehicles. The dust and water resistant cabinet has been designed to be wall mounted and easily accessible. The contents are based on many of the requirements of AS 5732:2015 Electric Vehicle Operations Maintenance and Repair.

[Read More](#)



DECO 1000V INSULATED GLOVES

SKU: D1000

Deco 1000V insulated Gloves provide effective individual protection for anyone required to work on live voltages and perform operations on or in proximity to electric installations. Each Class 0 1000V Insulated glove is tested to AS/NZS IEC60903:2020 standard to ensure maximum efficiency and safety.

[Read More](#)





1000V ELECTRIC VEHICLE TOOL SET

SKU: EV1000KIT

Our 1000V Electric Vehicle tool set has been designed around the requirements of AS5732. (Electric vehicle operations, maintenance and repair) When working on Electric Vehicles our 1000V Insulated EV tool kit provides added safety and is a integral in risk management procedures.

[Read More](#)



DIELECTRIC LOCKOUT TAGOUT PADLOCK

SKU: DPBL-KD-R

Designed for use in all lockout applications, our Dielectric Lockout Tagout Padlock enhances safety. Featuring a premium grade Nylon shackle and non-conductive, spark resistant body. The nylon shackle also cuts off the electrical current from the shackle to the key. Furthermore we can customize padlocks and Lockout Kits to suit your requirements.

[Read More](#)





GROUP LOCKOUT TAGOUT BOX

SKU: GLBOX

Group Lock boxes require fewer locks and are lighter than hasps on delicate energy isolating devices like circuit breakers. This Group Lockout Tagout Box from EFO allows keys to be inserted when box is locked. Transparent poly carbonate windows let you view contents from the outside. Pre-drilled holes in back allow for easy wall-mounting. It comes with hooks for hanging keys, locks, etc. inside the box.

[Read More](#)



SALISBURY ARC FLASH FACE SHIELD 12 CAL/CM2

SKU: AS1200HAT-PP

The new Premium Salisbury Arc Flash Face shield is a Weight Balancing Arc Flash Face Shield and Helmet. It stows in a balanced compact position, centred over the top of the hard hat when not required. The Face shield has an ATPV rating of 12 cal/cm². Nanotechnology provides a more transparent window for improved visibility. The Salisbury Arc Flash Face Shield unit includes ait vents below the chin that allow a natural convection air flow through the face shield. As a result this reduces fogging of the visor, lowers CO₂ levels and improves comfort for the user.

[Read More](#)





1000V INSULATED TORQUE WRENCH 3/8 5-25 N.M

SKU: 43138

The Tolsen 1000V Insulated Torque Wrench is manufactured and tested to VDE specifications. Furthermore its features a high strength compact design with short reversing movement. 3/8" Drive with 5-25 N.m torque settings.

[Read More](#)



GHOST VOLTAGE BUSTING MULTIMETER 1000V AC/DC TRMS

SKU: GBM1000

Next Generation Multimeter Safety

The New Ghost Voltage Busting Multimeter from EFO Automatically Busts Ghost Voltages Presenting a LoZ low impedance voltage input to the circuit to bleed off any potential ghost voltages the GBM1000 automatically switches to a high impedance input for increased user safety and measurement accuracy.

[Read More](#)





ROLL UP BAG FOR INSULATED MATS

SKU: MATBAG

The Convenient EFO Roll up Carry Bag for Insulated Mats. Not only does it protect the Insulated Switchboard Matting but also can be used as a ground sheet. Insulated Mats can quickly be rolled into the bag as well as reducing the storage space required. Furthermore the bag come with a strong carry strap.

[Read More](#)



DO NOT OPERATE TAGS 10 PACK REUSABLE

SKU: DLT1

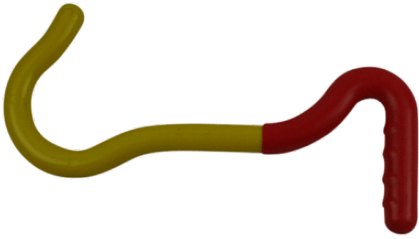
Our High Quality Plastic Reusable Do not Operate Tags are used for Lockout and Tagout of Equipment. They come in a pack of 10. These lockout tags Are Waterproof and Reusable. Unlike Paper and Plastic coated Lockout Tags our product is 100% Plastic and will outlast other Lockout Tagout products. Out of Service Tags are also available in the same high quality material and can be viewed in the Lockout Tagout section.

[Read More](#)



LOW VOLTAGE RESCUE CROOK

SKU: RCBM



The EFO Low Voltage Rescue Crook is used for Low voltage rescue applications. Uniquely our Rescue crook is the only one on the market with fibreglass construction and a double insulated handle. This only does not provide extra insulation. As well as identifying the correct end. Additionally the Crook has been Type tested to 10Kv. Also load testing of greater than 250Kg has been achieved.

[Read More](#)



SALISBURY LEATHER OVER GLOVES

SKU: ILPG3S

Salisbury Leather Over Gloves are used to provide mechanical protection from abrasion, cut, tear and also perforation. Over gloves should always be worn over Insulated Rubber Gloves to provide the needed mechanical protection. Salisbury ILPG series have a High visibility Orange Cuff. Furthermore these leather Protectors meet ASTM F696 standards and are available in sizes 8-12.

[Read More](#)





1000V INSULATED SCREWDRIVER SET 7 PIECE

SKU: 32607

The Tolsen 7 Piece 1000V Insulated Screwdriver Set is made from strong S2 material and are manufactured and tested to VDE specifications. These Insulated Screwdrivers have the tip type molded into the end of the handle for easy recognition. Tolsen 1000V Insulated Screwdrivers are a must for any serious electrician.

[Read More](#)



1000V INSULATED CABLE SHEARS

SKU: 11825

Tolsen 1000V Insulated Cable Shears or also parrot beak cutters are required when larger cable is required to be cut. They are manufactured and tested to VDE specifications.

[Read More](#)



INDEX

1

1000V Electric Vehicle Tool Set 291
1000V Electrical Insulated Mat AS/NZS 61111:2020 87, 135, 254, 288
1000V Hexagon Key T-Wrench 5mm 214, 225, 274
1000V Hexagon Key T-Wrench 6mm 213, 225, 274
1000V Insulated Cable Knife 213, 224
1000V Insulated Cable Shears 216, 227, 230, 296
1000V Insulated Dismantling Knife 206, 221
1000V Insulated Glove Kit 98, 128, 256, 289
1000V Insulated Hex Key Set 3/4/5/6/8/10mm 211, 222
1000V Insulated Multi Grips 216, 228
1000V Insulated Nut Driver Set 6 Piece 215, 226
1000V Insulated Ring Spanner Set 16/18mm 203, 220
1000V Insulated Screwdriver Set 7 Piece 215, 227, 296
1000V Insulated Socket Set 20 Piece 211, 223
1000V Insulated Straight Cable Knife 205, 221
1000V Insulated Torque Screwdriver 200, 219, 261
1000V Insulated Torque Wrench 3/8 5-25 N.m 203, 219, 293
1000V Interchangeable Screwdriver Set 50 Piece 214, 226
1000V Open Spanner Set 20 Piece 212, 224
1000V Ring Gear Wrench Set 10/12/13/14/17mm 212, 223
1000V Ring Gear Wrench Set 11/15/16/18/19mm 204, 220
1000V Ring Spanner Set 10/11/12/13/14/15/17/19mm 210, 222
1000V Socket Torx bits 5 Pcs 193, 217, 275
1000V Torx Screwdriver Set 5 Pcs 194, 218, 276
100M Earth Trailing Lead 30, 40
10KV HV Insulation Tester 15, 45
1500V DC Insulating blanket 278

2

2 test leads Set CAT IV 600V 26, 38

3

3 Phase Plug and Hose Lockout 74, 158
3 PIN Test lead set for GPOs 10, 33
3 Test Leads Set CAT IV 600V 27, 39

4

4 Wire Earth Resistance Tester 22, 71

5

500V Insulated Glove Kit 98, 129, 257
50M Earth Trailing Lead 30, 41

7

7A Load Unit 2000W CAT IV 19, 57, 261

A

ABC Service Line Comealong 198, 232, 258
ABC Service Line Comealong 95-150mm² 195, 231, 250
ABC Service Line Tensioner 205, 234, 265
AED Wall mounted Cabinet 81, 184, 286
Aircore Tower Worker Harness 123, 178, 271

Arc Flash Coveralls 9 cal/cm² 108, 156
Arc Flash Face Shield and Helmet 20 cal/cm² 113, 147
Arc Flash Helmet Bag Padded 89, 145, 288
Arc Flash kit HRC2 9 Cal/cm² 101, 149
Arc Flash Kit HRC4 ArcSafe® X50 83, 148
Arc Flash Switching Coat 52 Cal/cm² 95, 153
Arc Flash Switching Coat 9 Cal/cm² 1300mm 76, 151, 279
Arc Flash Switching Gloves 40 Cal/cm² 104, 155
Arc Flash Switching Gloves 9 cal/cm² 105, 156
Arc Flash Switching Hood 52 cal/cm² 96, 145, 154
Arc Flash Switching Jacket 52 Cal/cm² 96, 154
Arc Flash Switching Jacket 9 Cal/cm² 870mm 76, 150, 278
Arc Flash Switching Kit 52 Cal/cm² 94, 149
Arc Flash Switching Leggings 52 Cal/cm² 94, 152
Arc Flash Switching Trousers 52 Cal/cm² 95, 153
ArcSafe X50 Arc Flash Lift Front Switching Hood 97, 146, 155
Asbestos Removal Kit Minor Works 108, 190

B

Battery Storage Caution Sign 284
Bum Bag Contractors Lockout Tagout Kit 83, 161

C

Cable Core Separation Tool 207, 235, 268
Cable Lockout Device with 1M Cable 115, 170
Calibration Verification Check Box 18, 70
Canvas Pole bucket bag 198, 232
CARDIACT CPR Wall Chart 29.7 x 42cm (A3) 80, 183, 285
Cartridge Grip Fuse Puller 91, 165, 197, 238
Compact Earth Trailing Lead 50M 24, 37
Contact High Voltage Detector 11KV 7, 63, 196, 237
Contact Phase Rotation Meter Cat IV 28, 61, 267
Contractors Lockout Tagout Kit 118, 171
Convenient Extension Test Lead 9, 32
Cotton Knitted Glove Liners 122, 134, 271
Custom Lockout Tagout Kits 113, 169
Cut-Resistant Riggers Gloves 84, 128, 253

D

Danger Asbestos Removal Sign 450mm x 300mm 101, 189, 258
Deco 1000V Insulated Gloves 102, 130, 259, 290
Deco 17000V Insulated Gloves 103, 131
Deco 26500V Insulated Gloves 104, 131
Deco 3300V Insulated Gloves 107, 132
Deco 500V Insulated Gloves 107, 132
Deco 7500V Insulated Gloves 100, 130
Deco Goatskin Over Gloves 99, 129, 257
Deco Industrial HV Leather Outers 77, 126, 250
Dielectric Lockout Tagout Padlock 106, 166, 291
Dielectric Safety Boots 20KV 78, 127, 151, 281
Do Not Operate Tags 10 Pack Reusable 115, 169, 294
Do Not Operate Tags 100 Pack Waterproof Poly 82, 160, 287

E

EFO Analogue Insulation Tester 3, 44
EFO Canvas Glove Bag with Hanging Clip 114, 133, 269
EFO Contactless Voltage Tester 3, 62, 247
EFO Insulated Glove Kit Available in All Voltages 114, 133, 269

Electric Vehicle Emergency Plug 280
Electrical First Aid and Burns Kit 97, 186, 256
Electrical Installation in Progress Sign 450mm x 300mm 79, 252
Electrical Insulated Mat AS/NZS 2978 116, 137, 270
Electrical Safety Cabinet for EV Maintenance 290
ERGO Harness with waist belt 112, 178, 267
EV Danger Sign 283
EV Exclusion Zone Kit 277
EV Vehicle Workshop Safety & Tool Trolley 276
Extended Independent Earth Trailing Lead 10, 33, 254

F

First aid kit Modulator Workplace standard 123, 187
First Aid Kit wall mounted 86, 185
Flexible Coil Current Sensor 1000A 5, 51
Fuse Extractor Pig Tail with 32mm Adaptor 208, 241
Fused Test Lamps with Magnetic Holder 26, 66, 266
Fused Test Lead Set Cat IV 500V 10A 19, 36
Fused Test Leads 1000V CATIV 500mA 25, 38

G

Ghost Voltage Busting Multimeter 1000V AC/DC TRMS 23, 49, 293
GPO Test Lead Set 13, 35
Group Lock Box Wall mounted 78, 159, 281
Group Lockout Tagout Box 109, 167, 292

H

Halo Lithium Rechargeable Battery 92, 143
Halo Replacement Battery Cover 91, 142
HaloSL Hardhat Light White 93, 143
Heartsine Fully Automatic Defibrillator 81, 185, 252, 286
HEARTSINE Grey Pads & Battery Pack - Adult 80, 184, 285
High and Low Voltage Detector 17, 64
High Voltage Phasing Meter 20, 65
High Voltage Rescue Crook 121, 140, 191
Honeywell Full Face Respirator Kit P3 92, 174, 188
Honeywell Half Mask Respirator Kit 93, 175, 189, 255
House Service Fuse Puller 450mm 196, 238, 255
HV Electrical Insulating Mat AS/NSZ IEC61111:2020 Class 0-4 109, 136
HV Switchboard Rescue Kit 121, 140
HV Wall Mounted Rescue and Operators Kit 117, 139

I

IEC Test Lead Set Cat IV 600V 18, 36
Independent Earth Trailing Lead 24, 37, 264
Information Tags 10 Pack Reusable 86, 161
Insulated Cable Test Point for ABC 28, 40, 206, 235, 268
Insulated Fence & Crow Bar 15KV/1min 197, 244
Insulated Glove Inflator Tester 6, 69, 77, 127, 279
Insulated Linesman's Cover 110, 182, 204, 234, 264
IPC Ratchet Spanner 13/17mm 207, 236, 270

K

Keyed Alike Lockout Padlocks 106, 167
Keyed Alike Lockout Padlocks 10 Pack 79, 159
Klein 600A Tough Clampmeter 16, 53
Klein CATIV Tough Multimeter 16, 48
Klein Insulation Resistance Tester 289

Klein Low-Impedance Clamp meter 2, 50
Klein Non-Contact Voltage Tester 15, 64
Klein Self-Adjusting Wire Stripper 195, 230, 247
Kyoritsu Analogue Insulation Tester 14, 45

L

Lantern test lead Set CAT IV 600V 12, 34
Lanyard with Shock Absorber 1.2M 124, 179, 272
Large CB Lockout Device 119, 172
Linesman's Pole Strap 2.4m 124, 179, 272
Linesman's wire scratch brush 202, 233, 263
Lithium-Ion Fire Extinguisher 280
Live Line Hot Stick 1.2M 199, 239
Lockout Device Miniature CB Pin In Type 119, 172
Lockout Device Miniature CB Pin Out Type 118, 171
Lockout Tagout Station with Lid 100, 165
Low Voltage Rescue Crook 122, 141, 192, 295
LV Fuse Disconnect Hook 209, 242
LV Fuse Extractor Pigtail 209, 242
LV Fuse Remover 800mm 199, 239, 260
LV Switchboard Rescue Kit 125, 141, 273
LV Wall Mounted Rescue and Operators Kit 117, 139

M

M1120-V2-B Bluetooth NST Neutral and supply tester 4, 58, 67, 249
M1121-V2-B Bluetooth NST Neutral and supply tester 4, 59, 68, 249
Magnet for insulating blankets 1500V DC 277
Magnetic Roof Sign Danger 283
Magnetic Roof Sign Isolated 282
Miniature Circuit Breaker Lockout Siemens 87, 162
Miniature CB Lockout Device 120, 173
Miniature Circuit Breaker Lockout 90, 164
Moulded Case CB Lockout Device 120, 173
Multi function Installation Tester 31, 42, 43, 47, 59

N

NO Tool lockout Tagout Device 105, 166
Non Contact Voltage Detector 23, 65
Non Contact Voltage Tester Proving Unit 17, 55
Non-Contact High Voltage Detector 29, 66, 208, 241
Non-Contact Phase Rotation Meter 2M Leads 7, 60, 251
Non-Contact Phase Rotation Meter CAT IV 25, 61, 265

O

Out of Service Tags 10 Pack Reusable 112, 168
Out of Service Tags 100 Pack Waterproof Poly 82, 160

P

Plastic Body Lockout Padlock 116, 170
Plug and Hose Lockout 89, 163
PLUG AND HOSE LOCKOUT 111, 168
Plumbers Temporary Continuity Bond 201, 245
Pole Top Descender Kit 75, 176, 248
Pole Top Rescue Kit 75, 177, 248
Pole Work Platform for Timber Poles 201, 233, 262
Power Point Test Leads with Croc Clips 13, 35
Proving Unit for HV Non-Contact Detectors 12, 54
PU240 Proving Unit 240V AC 22, 56

PU400 Proving Unit 50-690V AC 21, 55

R

Roll Up Bag For Insulated Mats 111, 136, 266, 294

S

Salisbury Arc Flash Face Shield 12 cal/cm² 110, 146, 157, 263, 292

Salisbury Leather Over Gloves 125, 134, 273, 295

Sanwa 1000A Clamp Meter CAT IV 600V 6, 51, 251

Sanwa 2000A Clamp Meter 8, 52

Sanwa 5KV Digital Insulation Tester 20, 46

SANWA Digital Insulation Tester 29, 46

Sanwa Leakage Clamp Meter 14, 52

Sanwa Voltage Detector Supporter 8, 63

Service Caution Sign 284

SEW Digital Milliohm Meter 9, 73, 287

SEW ITC8 Check Box 11, 70

SEW Tone Cable Tracer F-Set 21, 68

Slider Toggle Lockout 88, 162

Snake Bite Emergency Kit 99, 186

Spanset pole top harness with buttock seat 85, 177

Stainless Steel Hasp 25mm 88, 163

Steering Wheel Lockout 282

Straight Test Lead Set CAT IV 600V 11, 34

Street Light Column Kit 103, 181, 260

Substation and Switchboard Drape 1200x600mm 85, 180, 253

Substation and Switchboard Drape 600x450mm 102, 181, 259

Supera Arc Flash Balaclava 16 cal/cm² 84, 144, 152

T

Telescopic Hot Stick 3.82m 202, 240, 262

Telescopic Hot Stick 7.78M 210, 243

Telescopic Hot Stick 9.18M 200, 240

Temporary Cable Wire Manager 90, 138, 164

Test Leads CAT IV 600V 27, 39

Thermal Imager for iOS Devices 5, 72

W

Wattmaster 1000V Linesman's Pliers 225mm 194, 218, 229, 246