

EV MAINTENANCE AND SAFETY

Electrical Factory Outlet has developed a range of Electric Vehicle EV Maintenance and Safety Products. Based on many of the requirements of AS 5732:2015. Electric Vehicle Operations Maintenance and Repair.

The electrical safety cabinet for EV Maintenance has also been developed. Built by EFO so as to enable safe working for Trained and Certified Mechanics and Technicians. Performing service and maintenance on EV and Hybrid vehicles. The dust and water resistant cabinet has also been designed to be wall mounted and easily accessible.



ELECTRIC VEHICLE FIRE BLANKET

SKU: EVFIREB69

The Electric Vehicle Fire Blanket can help to contain fires and prevent the spread of fire in EV and Petrol cars. It's able to assist in containing the flames, smoke, and toxic fumes so people can safely evacuate from the area.

[Read More](#)



ENHANCED THERMAL IMAGER

SKU: TC730E

The TC730E is an advanced thermal imager with Wi-Fi capability. Its large 3.5" IPS screen can clearly display 320x240 thermal resolution, 2MP visual camera, or a blended image of both. TC730E detachable battery pack is also convenient for easy and quick battery change, allowing continuously work for long periods of time.

[Read More](#)



PORTABLE THERMAL CAMERA 320x240

SKU: TC716S

The TC716S is a cost-effective portable thermal camera with multi-language OS. The sturdy and durable quality build has a IP54 rating and can withstand the drop of 2m height. The 4 button design is easy-to-use. Benefited by the wide temp measurement range and the built-in illuminator and laser pointer, widely applies in HVAC, electrical utility's, mechanical inspection and automotive maintenance.

[Read More](#)





KLEIN CARBON MONOXIDE DETECTOR

SKU: ET110

The ET110 CO Detector is an easy-to-use meter that detects and measures concentration levels of carbon monoxide (ppm) and temperature (Fahrenheit/Celsius), making it the perfect choice for HVAC professionals. Features backlit LCD screen, warning indicator light, audible and visual alarms and multiple function buttons. Includes carrying pouch and 4 x AAA batteries.

[Read More](#)



DECO 650V INSULATED GLOVES 280MM

SKU: D650280AS

Stay protected while working around live voltage with DECO 650V Insulated Gloves. Made from premium latex rubber, these 280mm (11") and 360mm (14") straight cuff gloves are rated up to 650 volts and meet the [AS 60903](#) standard, making them ideal for electricians, utility workers, and maintenance crews.

[Read More](#)



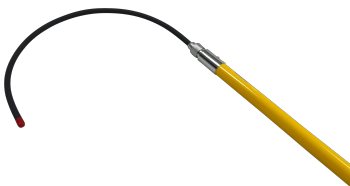


TELESCOPIC HV RESCUE HOOK 15KV

SKU: CST-15

The EFO Telescopic HV Rescue Hook is designed for rescuing those who are being subjected to electrical shock without having to directly touch the person being shocked. Our High Voltage Rescue Crook is rated to 15 kV and 80Kg. The rescue crook is telescopic in design making for very convenient for storage and measures 1.3m long when extended. Carry/Storage bag is also included with this item.

[Read More](#)



HIGH VOLTAGE RESCUE CROOK 25KV

SKU: CS-25

The EFO High Voltage Rescue Crook is designed for rescuing those who are being subjected to electrical shock. Without having to directly touch the person being shocked. The High Voltage Rescue Crook is a 25 kV fixed rescue stick that measures 1.5m long. Constructed from resin polyester and fibreglass foam filled tube. Rescue hooks and insulated sticks are suitable for medium and high voltage switch rooms. Substations, Plant and Generator rooms. UPS battery rooms and computer data centres.

[Read More](#)





TELESCOPIC HV RESCUE HOOK 24KV

SKU: CST-24

The EFO Telescopic HV Rescue Hook is designed for rescuing those who are being subjected to electrical shock without having to directly touch the person being shocked. Our High Voltage Rescue Crook is rated to 24 kV and 80Kg. The rescue crook is telescopic in design making for very convenient for storage and measures 1.5m long when extended. Carry/Storage bag is also included with this item.

[Read More](#)



1000V SOCKET TORX BITS 5 PCS

SKU: 81405

This High Quality Tolsen 1000V Socket Torx bits set contains 5 Torx socket adaptors to suit 3/8 drive insulated rachets or for use with our [insulated socket set](#). Sizes included are T10,T15,T20,T25 and T30. This set is commonly used for electric and hybrid vehicle maintenance and inspection. A plastic carry case is also supplied for storage.

[Read More](#)





1000V TORX SCREWDRIVER SET 5 PCS

SKU: 33505

This High Quality Tolsen 1000V Torx Screwdriver Set contains 5 Torx screwdrivers. Sizes included T10,T15,T20,T25 and T30. This set is commonly used for electric and hybrid vehicle maintenance and inspection. A plastic carry case is also supplied.

[Read More](#)



EFO CONTACTLESS VOLTAGE TESTER

SKU: VS50

The EFO contactless voltage tester has been designed to meet the high quality and specifications required by Australian utilities and service providers. The operating range is 50-1000V with a overvoltage safety category rating of CAT IV 1000V. Furthermore the EFO VS50 contactless voltage tester features a self test and is contained in a IP65 rugged waterproof housing.

[Read More](#)





EV VEHICLE WORKSHOP SAFETY & TOOL TROLLEY

SKU: EVSTROLLEY

The EFO EV Vehicle Workshop Safety & Tool trolley contains the basic safety equipment and signage requirements of AS 5732:2022 "Electric Vehicle Operations Maintenance and Repair." Designed to be portable with locking wheels the trolley can be moved to any bay the EV or Hybrid vehicle is being worked on. The emergency equipment will always be near to the potential risk area.

[Read More](#)



EV EXCLUSION ZONE KIT

SKU: EVEXKIT

The EV Exclusion zone kit is a convenient solution to creating a temporary exclusion zone around a vehicle under repair or maintenance. The 6 cones easily stack together to stow when not in use.

[Read More](#)



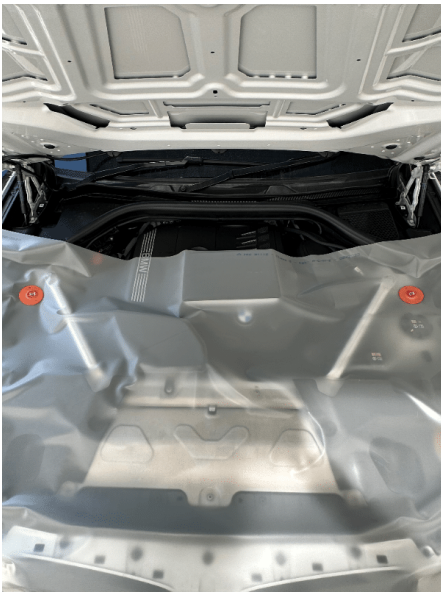


MAGNET FOR INSULATING BLANKETS 1500V DC

SKU: IBMAGNET

Insulated magnets can be used to fix the insulating blanket [IBCLEAR-2M](#) to metallic or non-metallic supports by placing the magnets in opposition.

[Read More](#)



1500V DC INSULATING BLANKET

SKU: IBCLEAR-2

1500V DC Clear Insulating Blanket for workers operating on live parts or in the vicinity of live parts. This insulating blanket translucent and is very soft to avoid scratching delicate surfaces.

[Read More](#)





ARC FLASH SWITCHING JACKET 9 CAL/CM2 870MM

SKU: EASCJT9

The ArcSafe® 9 cal/cm2 HRC2 ArcFlash Switching Jacket are inherently flame resistant, providing protection against electrical arc flashes and flash fires.

[Read More](#)



ARC FLASH SWITCHING COAT 9 CAL/CM2 1300MM

SKU: EASCCT9

The ArcSafe® 9 cal/cm2 HRC2 ArcFlash Switching Coat are inherently flame resistant, providing protection against electrical arc flashes and flash fires.

[Read More](#)





INSULATED GLOVE INFLATOR TESTER

SKU: GLOVEIN

The EFO Insulated Glove Inflator Tester is a portable device that conducts a air test on Insulated gloves and assists users during visual inspection to search for any abrasion, cuts, tears or punctures. Our Glove inflator can be used anywhere and comes with a durable storage bag made out of canvas and a strap to hold the rubber insulating glove in place.

[Read More](#)



ELECTRIC VEHICLE EMERGENCY PLUG

SKU: EVEP

The Electric Vehicle Emergency Plug is intended to temporarily block an electric vehicle from unpredictable vehicle behaviour. The Emergency-plug sends a charging signal to an electric vehicle. The charging signal automatically switches the vehicle to the P position (parking) or the N position (neutral). This blocks the vehicle so that it cannot drive away. All other functions of the vehicle remain usable.

[Read More](#)





LITHIUM-ION FIRE EXTINGUISHER

SKU: FEV4F-500

The Wormald F500 Lithium-Ion Fire Extinguisher provides protection against a Lithium-Ion fire. It contains a multiple-purpose firefighting agent which is ideal for Class A, B and F fire. It is the only agent proven to extinguish fires of lithium-ion batteries without reignition. The F500 Encapsulator Agent, when mixed with water, works by encapsulating a water-droplet and enhancing its natural cooling effect. When directed at a lithium-ion battery fire it also provides a blanket to drastically reduce toxic smoke emissions.

[Read More](#)



DIELECTRIC SAFETY BOOTS 20KV

SKU: DSBOOT

These Dielectric Safety Boots 20KV supplied by EFO are of the Highest specification, fully waterproof and hand-built. Manufactured with specially formulated insulating layers offering electrical protection over the whole boot.

[Read More](#)



GROUP LOCK BOX WALL MOUNTED

SKU: GLBOX-WMY



This Group Lock box Wall Mounted has a transparent poly carbonate window to let you view contents from the outside. It can be mounted in various positions and is bright yellow in colour for easy identification.

[Read More](#)



STEERING WHEEL LOCKOUT

SKU: SWC50

Steering Wheel lockout used for the lockout and warning of vehicles when under repair or maintenance in a workshop.

[Read More](#)





MAGNETIC ROOF SIGN ISOLATED

SKU: MRS-ISOLATED

Magnetic Roof Sign Isolated reads HV Battery on 2 sides and Isolated on 2 sides. Protected magnetic base attaches to EV car roof top displaying a warning when in use.

[Read More](#)



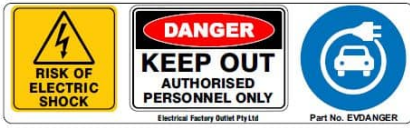
MAGNETIC ROOF SIGN DANGER

SKU: MRS-EV

Magnetic Roof Sign Danger reads High Voltage on 2 sides and Dander on 2 sides. Protected magnetic base attaches to EV car roof top displaying a warning when in use.

[Read More](#)





EV DANGER SIGN

SKU: EVDANGER

EV Danger sign reads DANGER KEEP OUT, Authorised Personal Only. Can be used in conjunction with bunting and bollard to create a exclusion zone around the vehicle. Poly 120mm x 410mm.

[Read More](#)



SERVICE CAUTION SIGN

SKU: EVCAUTION

Service caution sign reads Service/Repair work is currently being carried out on a plug-In Electric, Hybrid Electric, Battery Electric or Plug-In Hybrid vehicle in this workshop. DO NOT TOUCH. Poly 450mm x 300mm.

[Read More](#)



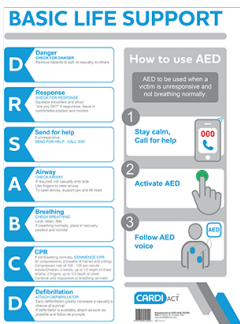


BATTERY STORAGE CAUTION SIGN

SKU: RESSCAUTION

Battery Storage Caution Sign reads High voltage rechargeable energy storage system present. DO NOT TOUCH. Authorised person only to move. Authorised person with space provided for name to be placed. Poly 450mm x 300mm.

[Read More](#)



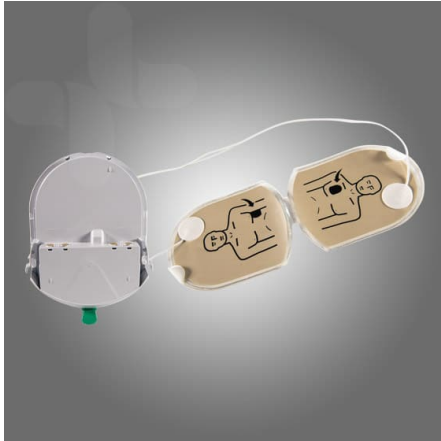
CARDI ACT CPR WALL CHART 29.7 X 42CM (A3)

SKU: CPRWC

CARDI ACT CPR Wall Chart 29.7 x 42cm (A3)

[Read More](#)





HEARTSINE GREY PADS & BATTERY PACK - ADULT

SKU: PAD-PAK-03

Replacement HEARTSINE Grey Pads & Battery Pack - Adult

[Read More](#)



AED WALL MOUNTED CABINET

SKU: cc-25

This indoor metal wall cabinet comes with Perspex front and complete with wall brackets. With its ARC approved AED signage, this cabinet ensures that your defibrillator is highly visible, increasing staff awareness and minimising lost time in time of an emergency. This attractive cabinet will also protect your AED from dust and grime.

[Read More](#)





DO NOT OPERATE TAGS 100 PACK WATERPROOF POLY

SKU: DLT1-100

Our High Quality waterproof Do not Operate Tags are used for Lockout and Tagout of Equipment. They come in a convenient roll of 100. These lockout tags Are Waterproof, Tear resistant and feature individual Brass eyelets. This product is suited for indoors and short-term outdoor applications.

[Read More](#)



SEW DIGITAL MILLIOHM METER

SKU: 4137MO

The microprocessor controlled SEW Digital Milliohm Meter comes supplied from EFO with a set of high quality kelvin test leads to assist in making accurate measurements.

[Read More](#)





1000V ELECTRICAL INSULATED MAT AS/NZS 61111:2020

SKU: MATLV

Recommended for protection of personnel where there is a possibility of contact with electrical equipment or conductors in domestic, commercial and industrial work areas. Our 1000V electrical insulated mat is manufactured of high quality dielectric elastomer rubber to provide complete protection against electrical shock due to earth faults. EFO switchboard matting complies with the Australian and New Zealand standard AS/NZS 61111:2020.

[Read More](#)



ARC FLASH HELMET BAG PADDED

SKU: AFH-BAG

Our Arc Flash Helmet Padded bag protects your face shield and helmet from potential damage when in storage. It suits a variety of face shields and helmets supplied by EFO ranging from 12 to 40 Cal/cm². Please contact one of the Sales team for further information.

[Read More](#)





KLEIN INSULATION RESISTANCE TESTER

SKU: ET600

The ET600 Klein Insulation Resistance Tester a multi-function Megohmmeter capable of producing 125V, 250V, 500V, and 1000V test voltages for insulation resistance measurements up to 4000MΩ. Also tests AC/DC voltages up to 1000V with automatic ranging True RMS technology. Convenient lock function and built-in stand for hands free operation. Dual-function backlit display monitors process.

[Read More](#)



1000V INSULATED GLOVE KIT

SKU: GLOVEKIT1000

The EFO 1000V Insulated Glove Kit provides effective individual protection for anyone required to work on live voltages and perform operations on or in proximity to electric installations.

[Read More](#)





ELECTRICAL SAFETY CABINET FOR EV MAINTENANCE

SKU: EVWKIT

The electrical safety cabinet for EV Maintenance has been developed and built by EFO to enable safe working for Trained and Certified Mechanics and Technicians who perform service and maintenance on EV and Hybrid vehicles. The dust and water resistant cabinet has been designed to be wall mounted and easily accessible. The contents are based on many of the requirements of AS 5732:2022 Electric Vehicle Operations Maintenance and Repair.

[Read More](#)



EFO 1000V INSULATED GLOVES

SKU: D1000

EFO 1000V insulated Gloves provide effective individual protection for anyone required to work on live voltages and perform operations on or in proximity to electric installations. Each Class 0 1000V Insulated glove is tested to AS/NZS IEC60903:2020 standard to ensure maximum efficiency and safety.

[Read More](#)





1000V ELECTRIC VEHICLE TOOL SET

SKU: EV1000KIT

Our 1000V Electric Vehicle tool set has been designed around the requirements of AS5732. (Electric vehicle operations, maintenance and repair) When working on Electric Vehicles our 1000V Insulated EV tool kit provides added safety and is a integral in risk management procedures.

[Read More](#)



DIELECTRIC LOCKOUT TAGOUT PADLOCK

SKU: DPBL-KD-R

Designed for use in all lockout applications, our Dielectric Lockout Tagout Padlock enhances safety. Featuring a premium grade Nylon shackle and non-conductive, spark resistant body. The nylon shackle also cuts off the electrical current from the shackle to the key. Furthermore we can customize padlocks and Lockout Kits to suit your requirements.

[Read More](#)





GROUP LOCKOUT TAGOUT BOX

SKU: GLBOX

Group Lock boxes require fewer locks and are lighter than hasps on delicate energy isolating devices like circuit breakers. This Group Lockout Tagout Box from EFO allows keys to be inserted when box is locked. Transparent poly carbonate windows let you view contents from the outside. Pre-drilled holes in back allow for easy wall-mounting. It comes with hooks for hanging keys, locks, etc. inside the box.

[Read More](#)



SALISBURY ARC FLASH FACE SHIELD 12 CAL/CM2

SKU: AS1200HAT-PP

The new Premium Salisbury Arc Flash Face shield is a Weight Balancing Arc Flash Face Shield and Helmet. It stows in a balanced compact position, centred over the top of the hard hat when not required. The Face shield has an ATPV rating of 12 cal/cm². Nanotechnology provides a more transparent window for improved visibility. The Salisbury Arc Flash Face Shield unit includes ait vents below the chin that allow a natural convection air flow through the face shield. As a result this reduces fogging of the visor, lowers CO₂ levels and improves comfort for the user.

[Read More](#)





1000V INSULATED TORQUE WRENCH 3/8 5-25 N.M

SKU: 43138

The Tolsen 1000V Insulated Torque Wrench is manufactured and tested to VDE specifications. Furthermore its features a high strength compact design with short reversing movement. 3/8" Drive with 5-25 N.m torque settings.

[Read More](#)



GHOST VOLTAGE BUSTING MULTIMETER 1000V AC/DC TRMS

SKU: GBM1000

Next Generation Multimeter Safety

The New Ghost Voltage Busting Multimeter from EFO Automatically Busts Ghost Voltages Presenting a LoZ low impedance voltage input to the circuit to bleed off any potential ghost voltages the GBM1000 automatically switches to a high impedance input for increased user safety and measurement accuracy.

[Read More](#)





ROLL UP BAG FOR INSULATED MATS

SKU: MATBAG

The Convenient EFO Roll up Carry Bag for Insulated Mats. Not only does it protect the Insulated Switchboard Matting but also can be used as a ground sheet. Insulated Mats can quickly be rolled into the bag as well as reducing the storage space required. Furthermore the bag come with a strong carry strap.

[Read More](#)



DO NOT OPERATE TAGS 10 PACK REUSABLE

SKU: DLT1

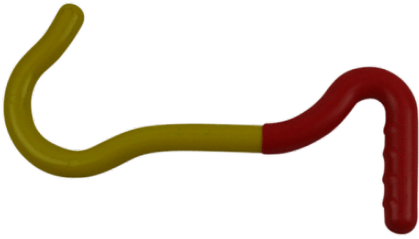
Our High Quality Plastic Reusable Do not Operate Tags are used for Lockout and Tagout of Equipment. They come in a pack of 10. These lockout tags Are Waterproof and Reusable. Unlike Paper and Plastic coated Lockout Tags our product is 100% Plastic and will outlast other Lockout Tagout products. Out of Service Tags are also available in the same high quality material and can be viewed in the Lockout Tagout section.

[Read More](#)



LOW VOLTAGE RESCUE CROOK

SKU: RCBM



The EFO Low Voltage Rescue Crook is used for Low voltage rescue applications. Uniquely our Rescue crook is the only one on the market with fibreglass construction and a double insulated handle. This only does not provide extra insulation. As well as identifying the correct end. Additionally the Crook has been Type tested to 10Kv. Also load testing of greater than 250Kg has been achieved.

[Read More](#)



LEATHER OVER GLOVES

SKU: ILPG3S

EFO supplies only high quality leather over gloves that are designed to fit correctly and conformability over our [rubber insulating gloves](#). Leather Over Gloves are used to provide mechanical protection from abrasion, cut, tear and also perforation. Over gloves should always be worn over Insulated Rubber Gloves to provide the needed mechanical protection and are available in sizes 8-12.

[Read More](#)





1000V INSULATED SCREWDRIVER SET 7 PIECE

SKU: 32607

The Tolsen 7 Piece 1000V Insulated Screwdriver Set is made from strong S2 material and are manufactured and tested to VDE specifications. These Insulated Screwdrivers have the tip type molded into the end of the handle for easy recognition. Tolsen 1000V Insulated Screwdrivers are a must for any serious electrician.

[Read More](#)



1000V INSULATED CABLE SHEARS

SKU: 11825

Tolsen 1000V Insulated Cable Shears or also parrot beak cutters are required when larger cable is required to be cut. They are manufactured and tested to VDE specifications.

[Read More](#)

