

# LV COVERS AND BLANKETS

LV Covers and Blankets are designed to cover over power lines and mains. cross arms, fuses, links and communication cables. service wires and point of attachments. Underground LV Covers and Drapes are designed to screen substations, panels, switchboards. transformers, bus bars, cabinets, columns, pillars and pits. They provide temporary insulation from brush contact. during maintenance of potentially "live" low voltage electrical components. Our plastic guards are utilized by Utilities and Electrical Contractors. They are designed to provide temporary electrical insulation. mechanical protection and also visual warning of power lines and conductors.



## SUBSTATION AND SWITCHBOARD DRAPE 1200X600MM

**SKU:** SBD2

Our Substation and Switchboard Drape 1200x600mm is designed to help screen potentially live electrical environments during routine maintenance. Tested and stamped to comply with Australian Standard AS-4202. Furthermore customized sizes can be ordered upon request.

[Read More](#)





## SUBSTATION AND SWITCHBOARD DRAPE 600X450MM

**SKU:** SBD1

Our Substation and Switchboard Drape 600x450mm is designed to help screen potentially live electrical environments during routine maintenance. Tested and stamped to comply with Australian Standard AS-4202. Furthermore customized sizes can be ordered upon request.

[Read More](#)



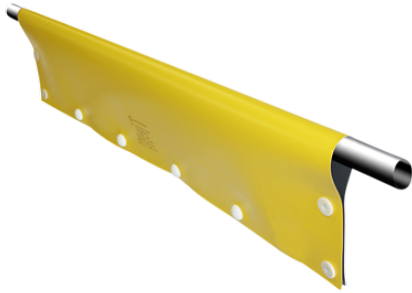
## STREET LIGHT COLUMN KIT

**SKU:** SLCKIT

The Low voltage Street Light Column Kit is designed to help screen potentially live electrical environments during routine maintenance. Our kits have been specified by Electrical Utilities and conform to local and international standards. And provide an easy to use solution with all necessary components in one place, also stored in a bag.

[Read More](#)





## INSULATED LINESMAN'S COVER

**SKU:** LVLC

Our Insulated Linesman's Cover is utilised by Utilities and Electrical Contractors. They provide a temporary electrical insulation barrier during maintenance of power lines. Conductors, cabling, catenary wires, fuses, cross-arms, pins and links.

[Read More](#)

